

YALE ALUMNI WEEKLY

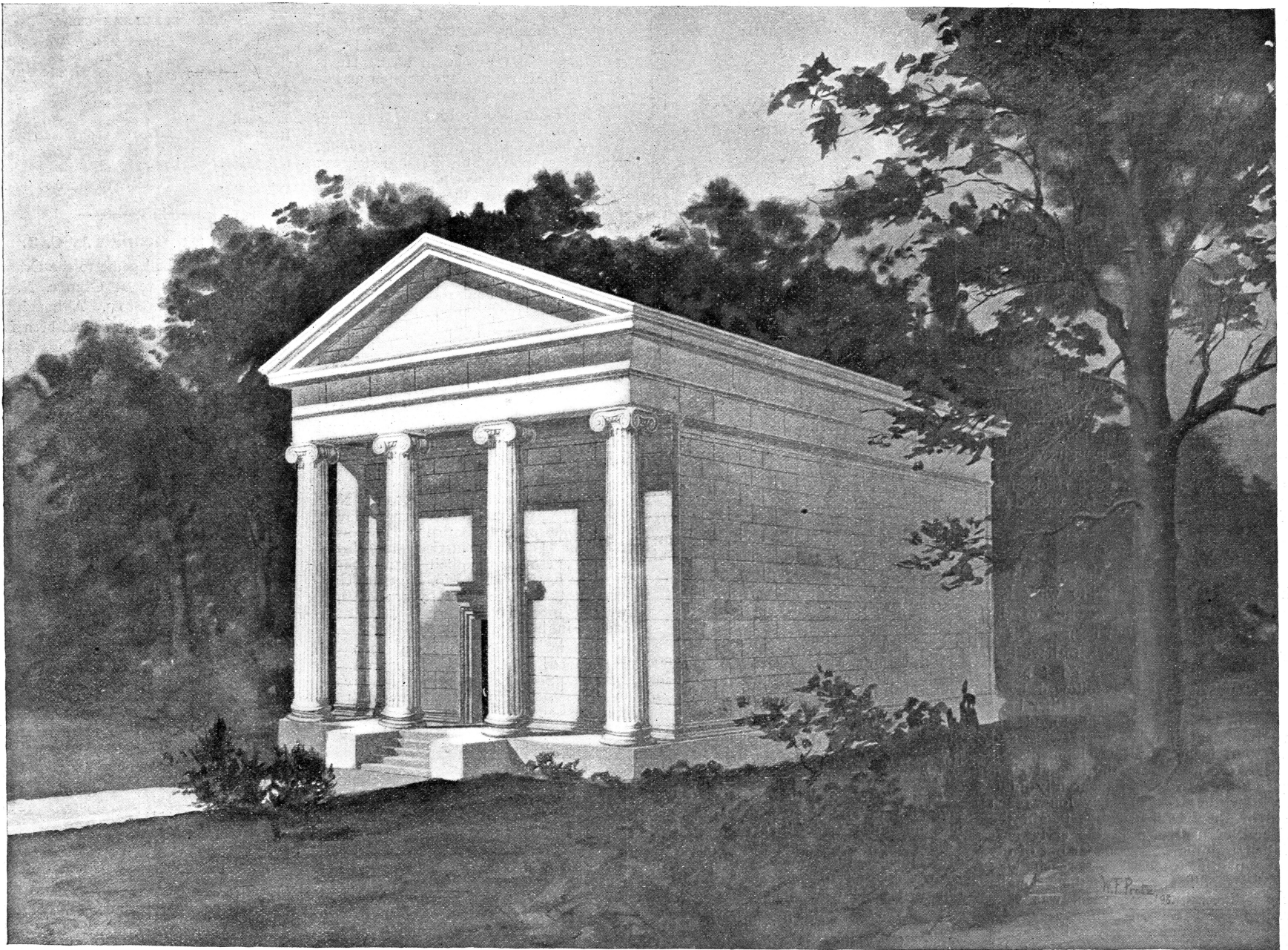
VOL. IX. No. 38.

NEW HAVEN, CONN., WEDNESDAY, JUNE 20, 1900.

Copyright, 1900,
by Yale Alumni Weekly.

PRICE 10 CENTS.

NEW BOOK AND SNAKE HALL.



Being Erected on Corner Grove and High Streets.

YALE-HARVARD RACES.

Time and Direction Rowed — Best Trains for New London.

The annual Yale-Harvard boat races will be rowed at New London, on the Thames, Thursday, June 28, in the following order, as decided at a conference of the Yale and Harvard rowing authorities, Saturday, June 16: University Fours will start at the beginning of the 4-mile course at 11.30 A. M., and row with the tide to the Navy Yard, two miles. The Freshman Eights will be ready at the Navy Yard, and with no delay, will race from that point to the drawbridge. As soon as the observation trains can get back to the start the University Crews will row, probably between 12 and 12.30. This is exactly the program of last year, except that the hour is an earlier one. Should rowing be impossible in the morning, the races

will be rowed up stream in the same order, the fours starting from the drawbridge at 6 P. M. on the incoming tide; the Freshmen finishing the course and the University following as soon as possible, probably by 7 o'clock. Two observation trains will follow the crews, the Central Vermont on the West side and the N. Y., N. H. & H. on the East side. No boats will follow the crews but the Harvard and Yale launches and the two official boats. Mr. Meikleham of Columbia will be the official starter.

TRAINS AND BOATS FOR THE RACES.

A special train will leave New Haven at 9 A. M., Thursday, June 28, due in New London at 10.25 A. M., and a second train will leave New Haven at 10.05 A. M., due in New London at 11.30 A. M., both returning after the race is over.

The rate in coaches on the specials will be \$1.75 for the round trip. Parlor cars will be operated on train leaving

New Haven at 10.05 A. M. Tickets, covering round trip passage and parlor car service, will be sold at rate of \$3.50, at Station Ticket Office.

Parlor cars will be operated from New York, leaving at 8 A. M. Tickets, including round trip passage and parlor car accommodations, \$7.00.

Steamer Richard Peck will leave New Haven at 8 A. M., taking position at anchorage North of Thames River Bridge. Rate from New Haven, \$1.75.

Steamer City of Lowell will leave wharf opposite New London Station for anchorage, about half an hour before starting of University race, tickets 50 cents.

The application for seats on the Observation train closed last week and all the unused tickets in the possession of the Yale management are returned this week. The applications from graduates have been rather light.

The facilities for the race are better than ever before. The new train on the Central Vermont Railroad is very

comfortable and safe. The seats on this train, which are comfortably cushioned, have already been well taken up. The train on the new road on the east side also continues popular.

New Hall of the Book and Snake Society.

The accompanying illustration is from a preliminary architect's sketch and represents the new hall of the Book and Snake Society, substantially as it will look when completed. The only material change is in the front steps, which will extend across the portico to the blocks in front of the two outer columns. The building is now in process of construction and will be completed in September. Its dimensions are forty feet by seventy, and the material is white Vermont marble. It is located on the corner of Grove and High Streets, next to the new Memorial Hall and facing on Grove Street. The architect is R. H. Robertson of New York City.