

# YALE ALUMNI WEEKLY

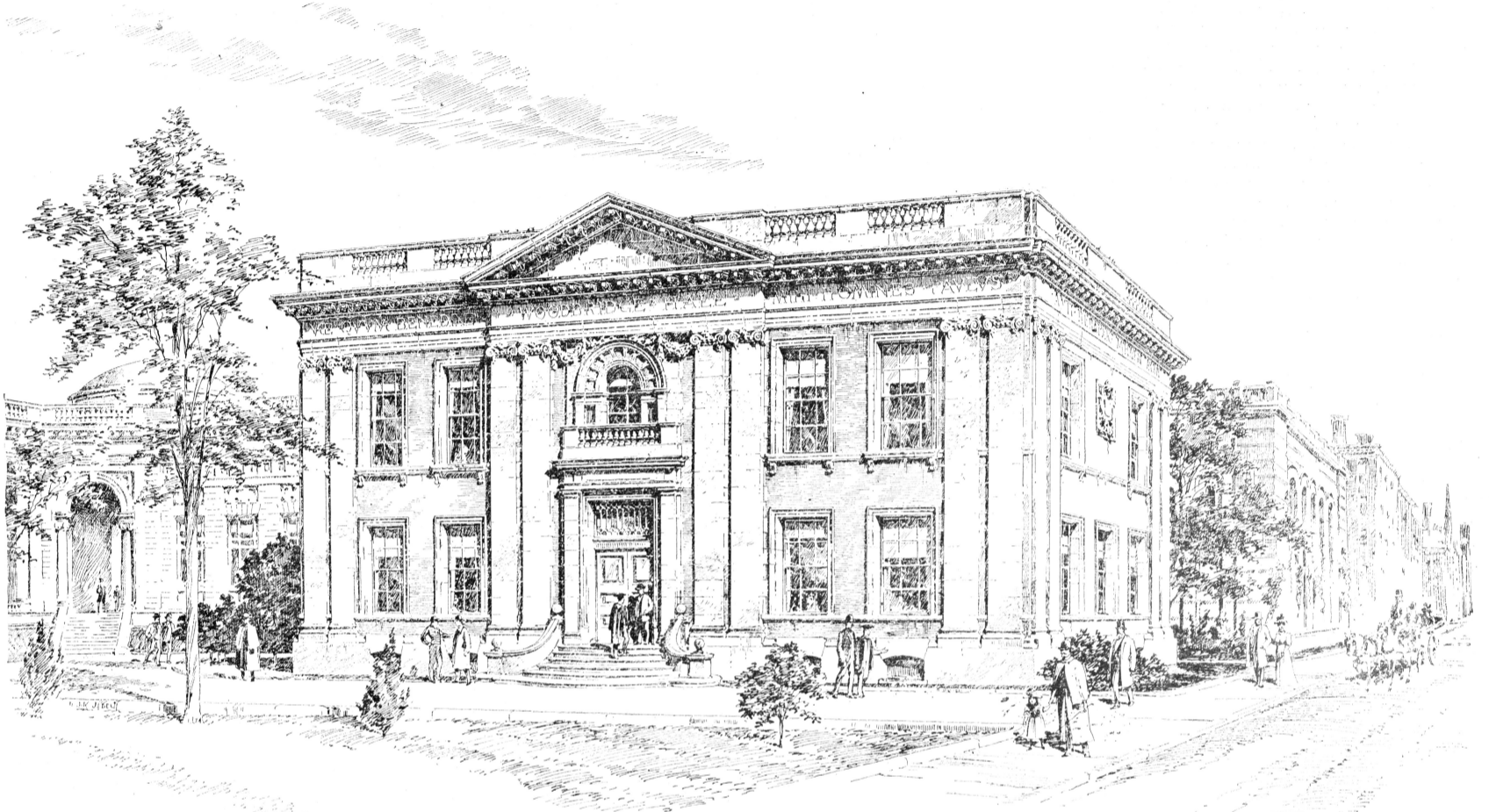
VOL. IX. No. 35.

NEW HAVEN, CONN., WEDNESDAY, MAY 30, 1900.

Copyright, 1900,  
by Yale Alumni Weekly.

PRICE 10 CENTS.

## WOODBIDGE HALL.



The Administration Building for the New Campus.

Messrs. Howells & Stokes, Architects.

### TO YALE ALUMNI.

#### A Report from the Advisory Board on the Condition of the Paper.

To the Alumni of Yale University:

The growth in scope and importance, during the past few years, of the YALE ALUMNI WEEKLY, has led the members of its Advisory Board, at the request of the Editor, to take under consideration the question of the permanent constitution of the paper as a Yale institution.

When the discussion was first entered upon, the Board hoped to be able to make a definite report before the close of the present year. The subject, however, has proved broader than was anticipated, and the Board think it better for the present merely to report progress, and to say:

(1) That the matter is receiving the careful consideration which is due it.

(2) That the Advisory Board are so well satisfied with the character, growth and position of the paper, that they are unwilling to recommend any change until satisfied that it will at least conserve the present strength of the paper. That, therefore they propose to take such time as is necessary to properly prepare and present their plans.

(3) That the present Editor of the paper will in the meantime continue his work as editor and manager, and the present Advisory Board will continue to act as the final judges of the editorial policy of the paper.

For the Advisory Board,  
JAMES R. SHEFFIELD,  
PIERRE JAY,  
Committee.

### The Baseball Situation.

Yale begins the first of the championship baseball games with Princeton, Saturday, June 2, at Yale Field, and gives Princeton a return game, Saturday, June 9, at Princeton.

On Wednesday, May 23, Lehigh defeated Yale at the Field, 10 to 8. With the exception of Cook there was no batting, and the fielding was slovenly. Camp did not play. In the Georgetown game on Friday, Yale did some fine work and won, by 7 to 2. Robertson's fine work in the box, and the timely batting of Cook, Camp and Robertson, were the features. In the game with the Crescent A. C. at the Field, the work of the Nine was again below the standard. Yale won, 7 to 5, but made too many errors, Quinby leading the list with four. Notwithstanding the evident drops in the Nine, Yale men, knowing what splendid material there is in it, are confident that by Saturday, Captain Camp will pull his men together in first class baseball form. The scores of these games will be printed in another issue, an unusual press of special matter making it impossible this time, owing to lack of room.

### New Alumni Weekly Quarters.

On or before June 6, the YALE ALUMNI WEEKLY will change its main office from 6 White Hall to 1016 Chapel St., (Chase & Co.'s Building). The room at 6 White Hall will be retained as a Campus office. The new quarters, which are opposite the Chapel Street entrance to the Campus, are secured in order to give room, light and air for the proper transaction of the paper's business. Its location will make it more convenient as a bureau of information for alumni return-

ing to New Haven. They will always be most welcome there. There will be a simple reception room, where University and other papers will be on file and where there will be facilities for letter writing, telephoning and telegraphing.

The offices of the Yale University Baseball Association, the Yale University Football Association, the University Athletic Association and the Boat Club will be on the same floor (the third).

### Woodbridge Hall.

In designing a building appropriate to hold the executive offices of Yale University, the architects, Messrs. Howells & Stokes of New York, have adopted a style of much simplicity, which yet gains a certain academic dignity from the full order of applied pilasters. If anything, the style is English, of the kind from which our Colonial sprang, and the general material of white lime stone is modified by the panels of soft red brick to a sentiment in keeping with the older buildings in our own universities in New England and the South.

The interior arrangement consists of a group of offices for the Secretary on the left of the entrance, and another for the Treasurer on the right. Above, in a higher story, are the President's offices on one side, and on the other, the Hall for meetings of the Corporation. This hall will probably be given a domed or coffered ceiling, and will be paneled with hard wood.

Throughout the interior, old mahogany doors will be used, taken from a residence lately demolished in New York. The private rooms of the President, Secretary and Treasurer will also have old marble mantels.

### INTERCOLLEGIATE GAMES.

Pennsylvania Easily First—Some Great Contests—Rain and Mud, but Splendid Performances—Yale Surprised Her Friends.

Weather more unpleasant than that on both days of the annual Intercollegiate Track Meet on Columbia Field, New York, May 25 and 26, was never seen at a similar meet, but, notwithstanding the sodden field and the muddy and slippery track, the performances were excellent, with a few exceptions, and two records were broken. The crowd was the largest that ever gathered at an intercollegiate track meet, a remarkable fact, considering the cold and stormy weather. Princeton, hopeful of winning first place, had the largest delegation, which kept up nearly constant cheering and singing throughout the afternoon. Yale made a poor showing in the audience, a small body of faithful graduates on the porch of the Club House giving the only Yale cheers heard.

Pennsylvania for the fourth successive year won the championship. This was accomplished this year in a large measure by the work of that wonderful athlete, A. C. Kraenzlein, who was the star of the entire meeting, carrying off eighteen points. Before the preliminaries on Friday afternoon, Princeton had been picked by some as a possible winner. On Saturday afternoon their chances for championship honors were con-