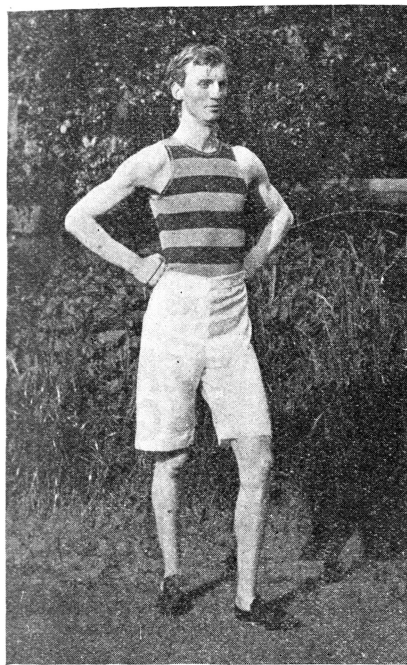


ATHLETIC NEWS.

Sheff. Modifies Rules—Official Warning to Bar Athletes.

A modification of the rules of discipline at the Sheffield Scientific School went into effect this week. The changed rules are in the direction of more effective guarding of the scholarship of those engaged in athletics and other matters outside of the curriculum.

The new rules forbid the participation in athletics of those who are actually in danger, as evidenced by official warning. This means that a general low average, a number of conditions, the repetition of subjects with the class below, or any other fact or evidence



CAPT. W. P. DRUM, California.

of danger will bar out the athlete, and keep him barred out until he is again out of danger. There is to be no special opportunity for him if he gets into trouble, because there will be only one way out which is safe.

The former rule that a single condition disqualified was found to fail as a means of bringing pressure and to exclude men occasionally whose general work and standing in the School was excellent. The rule did not seem to mark the danger line or to keep people away from it.

Baseball of the Week.

Yale baseball has had a poor week of it. The Brown game showed some good fielding, but also poor work. The batting was most disappointing. Things were worse at Columbia. The Team has the right stuff, good physical material and excellent spirit, and is well guided. But it needs instruction and help right away.

COOK TO PLAY.

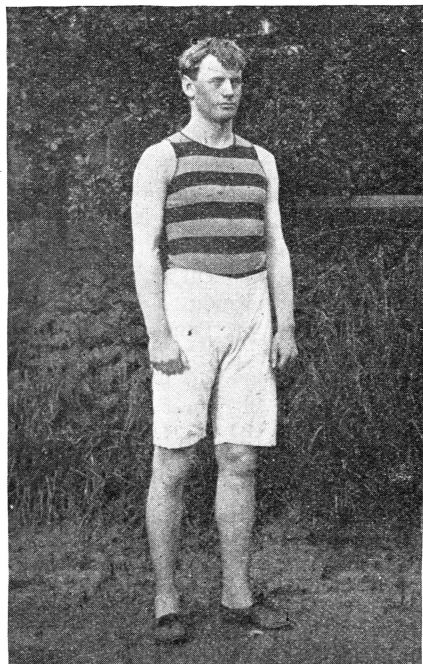
The change of rules will allow C. P. Cook, 1901 S., to play. His general stand is good and his attendance most regular. The technicality of practically a single, close condition has hitherto prevented his joining the players, for the old rule has been consistently applied. His case illustrates where the old rule failed, but was in no sense a cause of the change, which has been under consideration for months.

Yale 5; Brown 1.

Yale took advantage of the errors made by the Brown Nine, in the game at the Field, Wednesday, May 2, and by the bunching of hits at an opportune time won out, with five runs to one. With the exception of Quinby, who made three errors, the Yale fielders played carefully, and at critical times were as steady as professionals. Three times Brown had a man on third and could not score. Quinby's first error, which was largely responsible for Brown's run, was an excusable one, the ball being a slow grounder between first and second base, which the runner was following very closely. Quinby made a juggling catch of it, however, and was late a fraction of a second in getting

the ball to first. His other two errors were flat ones, the ball in both cases being right in his hands. For Yale, Garvan pitched a strong game, allowing only five hits and giving no bases. He took care of all the batted balls in his territory and made a pretty sacrifice hit. Washburn, for Brown, gave five bases on balls, but kept Yale down to five hits, well scattered. Crane, Brown's third baseman, made a one-handed catch of a foul ball which was one of the most phenomenal seen at the Field for years. Behind the bat Cunha caught well and kept the runners very close to bases. His swift and accurate throwing to second makes stealing that base a very risky undertaking. Captain Camp had the greater part of the fielding to do, accepting eight chances without an error. His throwing to first, always good, was perfect on Wednesday. The weak spots in the Nine, as shown in several innings, when a hit meant a run or two, are still the batting and slowness on bases.

Brown opened the game in a dashing way with Tobey's two-base hit over third. Bacon singled and Tobey came home on a slow grounder by Clark. Up to the fifth inning, Brown showed the steadiest kind of a game, and gave an exhibition of the kind of ball that shut out Harvard without a run the preceding Saturday. In that inning, however, with Sharpe and Guernsey on bases, with no one out, Whittemore threw wild to second, which started an epidemic of errors and allowed both runners to score. In the seventh, with one man out, Guernsey and Quinby were given their bases on balls and both scored on Barnwell's drive to right field. Camp, who followed at the bat, brought Barnwell home. In the last of the ninth Brown made two clean singles and it looked like runs, but Camp threw both



C. BROUGHTON, California.

men out with a lively double play and closed the game.

The score:

YALE.		AB.	R.	IB.	PO.	A.	E.
Quinby, 2b.	3	1	0	2	2	3	
Barnwell, cf.	4	1	2	0	0	0	
Camp, ss.	2	0	1	2	6	0	
Sullivan, rf.	3	0	0	2	0	0	
Cunha, c.	4	0	0	5	2	0	
Brown, 3b.	4	0	0	2	0	0	
Sharpe, 1b.	3	1	1	11	0	0	
Guernsey, lf.	2	2	2	0	0	0	
Garvan, p.	2	0	0	1	2	0	
Total	27	5	5	27	12	3	

BROWN.

AB.	R.	IB.	PO.	A.	E.
Tobey, ss.	4	1	1	3	4
Bacon, 2b.	4	0	1	1	3
Clark, cf.	4	0	0	2	0
Barry, lf.	4	0	1	0	0
Detmers, 1b.	4	0	0	11	1
Abbott, rf.	1	0	1	0	0
Wheeler, rf.	2	0	0	1	0
Whittemore, c.	3	0	1	5	0
Crane, 3b.	3	0	0	1	4
Washburn, p.	3	0	0	0	2
Total	32	1	5	24	14

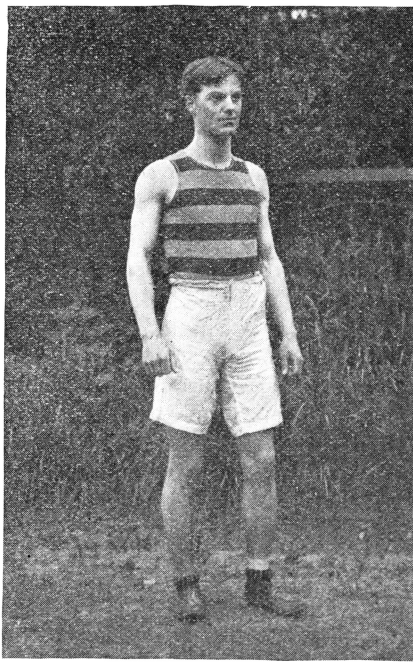
Score by innings:

	1	2	3	4	5	6	7	8	9
Yale	0	0	0	0	2	0	3	0	*—5
Brown	1	0	0	0	0	0	0	0	0—1

Summary: Two-base hit—Tobey. First base on errors—Brown 2. Stolen bases—Camp (2), Guernsey. Struck out—Barnwell (2), Quinby, Garvan, Sullivan, Washburn, Wheeler, Crane, Barry, Detmers. Bases on balls—By Washburn 5. Left on bases—Yale 4; Brown 4. Sacrifice hit—Garvan. Time—One hour forty minutes. Umpire—Snyder.

Yale 9; Columbia 4.

Yale's play against Columbia in the ball game at Columbia Field, New York, Saturday, May 5, was very discouraging, considering the possibilities of the team. The score was 9 to 4 in Yale's favor, but errors were altogether too frequent for this time of the year, and the batting was weaker than ever, all but one hit of the seven scored being scratches. The Columbia team was not a strong one, either at the bat or in the field and made all sorts of errors, Goodman, the short stop, being responsible for four costly ones. Robertson was in the box for Yale for eight innings and pitched well, although in the sixth he was hit safely three times. McKelvy pitched the last inning in good



J. H. HOFFMAN, California.

form. The feature of an otherwise poor game was Cunha's catching and throwing to bases.

The score:

YALE.		AB.	R.	IB.	PO.	A.	E.
Quinby, 2b.	5	0	0	4	0	2	
Barnwell, cf.	4	2	1	2	0	0	
Camp, ss.	4	1	2	1	2	0	
Sullivan, rf.	4	1	1	1	0	1	
Cunha, c.	3	1	1	3	1	0	
Brown, 3b.	3	1	1	2	3	1	
Sharpe, 1b.	3	1	1	10	1	0	
Guernsey, lf.	2	1	0	3	0	1	
McKelvy, p.	1	0	0	0	1	1	
Robertson, p.	3	1	0	1	3	0	
Total	32	9	7	27	11	6	

COLUMBIA.

AB.	R.	IB.	PO.	A.	E.
Burrell, 3b.	4	1	1	3	2
Southard, cf.	3	1	1	2	0
Burns, lf.	4	0	0	2	1
Marcus, p.	3	1	1	0	2
Kebler, c.	4	1	0	2	3
Sales, lf.	4	0	0	2	1
Milke, 1b.	4	0	0	12	0
Armstrong, 2b.	4	0	1	1	5
Goodman, ss.	4	0	0	0	2
Total	34	4	4	24	16

Score by innings:

	1	2	3	4	5	6	7	8	9
Yale	0	1	1	6	0	0	0	1	*—9
Columbia	0	0	0	0	0	2	0	0	2—4

Summary: Two-base hits—Sharpe, Marcus. Three-base hit—Southard. Stolen bases—Barnwell, Camp, Sullivan, Guernsey. Bases on balls—By Robertson 1; by McKelvy 1; by Marcus 4. Hit by pitched ball—By Marcus 2. Struck out—McKelvy, Goodman (2), Burrell. Base hits—Off Robertson 3; off McKelvy 1. Passed ball—Kebler. Double plays—Brown, Quinby and Sharpe; Marcus, Armstrong and Milke. Time—One hour forty-five minutes. Umpire—H. M. Keator, Yale '97.

Harvard's Baseball Schedule.

The Harvard Nine has already played five of its games and twelve yet remain as follows:

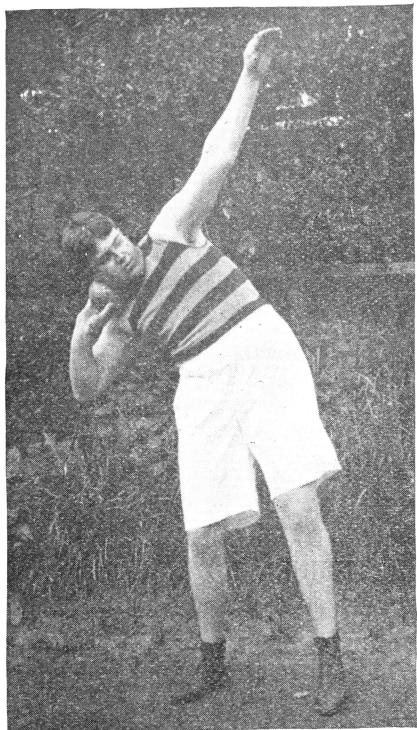
- May 10—Bowdoin at Cambridge.
- May 12—Columbia at Cambridge.
- May 16—Lafayette at Cambridge.
- May 19—Pennsylvania at Philadelphia.
- May 26—Princeton at Cambridge.
- May 30—Georgetown at Cambridge.
- June 2—Brown at Providence.
- June 6—Holy Cross at Worcester.
- June 9—Pennsylvania at Cambridge.
- June 13—Princeton at Princeton.
- June 16—Holy Cross at Cambridge.
- June 21—Yale at Cambridge.
- June 26—Yale at New Haven.
- June 30—Yale at New York in case of a tie.

Baseball Games of Last Week.

- Tuesday, May 1—At Middletown, Manhattan 7, Wesleyan 5.
- Wednesday, May 2—At Philadelphia, Pennsylvania 16, Syracuse University 7; at Worcester, Holy Cross 5, Manhattan 1; at Princeton, Princeton 11, Cornell 7; at Washington, Georgetown 17, Carlisle Indians 0; at Hanover, Dartmouth 4, Tufts 3.
- Thursday, May 3—At Middletown, Wesleyan 11, Brown 1; at Hanover, Harvard 8, Dartmouth 0; at Fordham, Fordham 3, Cornell 1.
- Friday, May 4—At Worcester, Princeton 6, Holy Cross 0; at Jasper Oval, Manhattan 18, Cornell 9.
- Saturday, May 5—At Providence, Brown 6, Princeton 1; at Cambridge, Harvard 12, Williams 0; at Hanover, Dartmouth 8, Boston College 5; at Andover, Holy Cross 1, Andover Academy 0; at Middletown, Wesleyan 12, Amherst 3; at Philadelphia, Cornell 6, University of Pennsylvania 5.

The Apollo Glee Club.

The Apollo, or Second Glee Club for the remainder of the year will be as follows: First tenors—F. W. Jackson, 1902; F. M. C. Robertson, 1901; J. S. Ogilvie, 1901 S.; A. P. Escher, 1902; G. B. Chadwick, 1903; J. R. Hall, 1902; H. H. Reed, 1901 S. Second tenors—H. H. Christian, 1901; W. F. Roberts, 1902; R. R. Wright, 1901; S. R. L. Griffiths, 1901; B. Ellsworth, 1903; J. M. Carlisle, 1901; T. W. Mulford, 1901; W. A. Blount, 1903; J. W. Reynolds, 1903. First bass—C. W. Smith, 1902; S. Hay, Special; F. L. Phillips, 1902 S.; B. P. Twichell, 1901; E. D. Vaile, 1901; S. L. Coy, 1901; R. R. Welch, 1901 S.; C. T. Lark, L. S.; W. B.



A. D. PLAW, California.

Tyler, 1903; B. C. Rumsey, 1902; P. S. Mitchell, 1901. Second bass—H. D. Humiston, 1902; T. H. Bartholomew, 1900; F. B. Makepeace, 1901; F. B. Eiseman, 1901; I. E. Brainard, M.S.; G. S. Hurst, 1903; R. M. Kellogg, 1901 S.; A. C. Ludington, 1902.

Charles R. Henderson, 1901, has been elected Captain of the Harvard University Golf Team, to fill the vacancy left by George C. Clark, 1901, who resigned to play baseball.