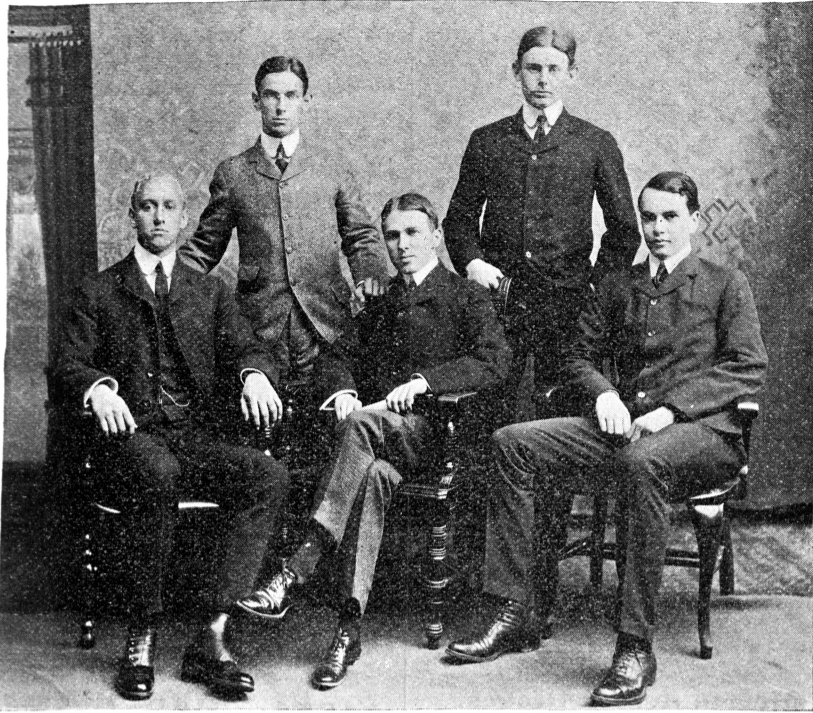


NINETEEN HUNDRED COURANT BOARD.

H. A. Webster.

S. G. Camp.



P. H. Hayes.

H. S. Canby (Chm.)

S. B. Dean (Bus. Mgr.)

Photo. by Pach.

ELECTIVE CHOICES.

Comparison of Figures Show Some Significant Changes.

The choices of Senior and Junior electives for the college year 1900-1901, which were announced Saturday, May 5, show in some instances very great changes from the figures of recent years, the tendency seeming to be towards those things which the men regard as bearing more directly on the practical matters of life.

In Psychology, Ethics and Philosophy last year, 358 Seniors and 40 Juniors elected courses; this year only 116 Seniors and 38 Juniors. This great drop is chiefly in the course on "Principles of Evolution" and "Philosophical Anthropology," which fell from 193 to 8, and from 80 to 31 respectively. On the other hand, there has been a considerable improvement over the figures of last year in "Outlines of General Philosophy," and "Psychology," physiological and experimental.

In Political Science and Law there is a general advance in the figures of the elective choices. The very popular course in "Economics," which attracted 247 Juniors last year, has been chosen by 267 this year. Only one Senior takes this course, however, compared with 13 last year.

A slight falling off is noticed in the two courses in the "Science of Society." In the course on "Jurisprudence and Law" there is a drop from 174 Seniors to 45, but this is largely explained by the establishment of the five-hour professional preparation course, which attracted 66 Seniors. The decline in "United States Industrial History," from 123 Seniors last year to 49, is probably due to President Hadley's leaving the course. Fifty is about the average class in this subject.

History declines very slightly, the most noticeable being "American National History," which fell from 141 Juniors to 104, and "European History" and "English Constitutional History,"

which dropped from 215 Seniors to 189 and from 68 Seniors to 51, respectively. The principal increase was in "Medieval History," from 2 to 9 Seniors and from 136 Juniors to 200. The new course, "European Colonies in Asia and Africa," is chosen by 50 Seniors and 4 Juniors, and "Recent American History," by 50 Seniors.

MODERN EUROPEAN LANGUAGES.

The study of Modern European Languages, English excepted, has been affected less in the electives this year than any other branch of study, the figures being unusually uniform not only for last year, but for several years past.

An increase is noticed all along the line in English electives. Beginning with "Rhetoric," in which three courses are offered this year, 7 Seniors and 80 Juniors have decided upon the courses as compared with 3 and 33 last year. Other advances are in "English Poets of the Nineteenth Century," from 138 Juniors to 165, and "Tennyson and Browning," from 23 Seniors and 36 Juniors to 49 Seniors and 60 Juniors. The new course, "English Romanticism in the Nineteenth Century," attracts 26 Seniors; "American Literature," 72 Seniors and 89 Juniors, and "English Prose" 23 Juniors. Eight Seniors and 32 Juniors take the new course, "General View of French Literature," which is conducted, not in French, but in the English language. One Senior has availed himself of the course in "Norwegian and Danish," and 1 in "Russian."

In the "Ancient Languages and Linguistics" and in "Biblical Literature," there is practically no change. "Israeli Institutions," a new course in "Biblical Literature," is elected by 2 Seniors and 1 Junior, and "Studies in the Gospels," by 6 Seniors and 1 Junior. In the "Fine Arts," "Music," and "Physical Education," the departure from the figures of last year is not worth mentioning.

In "Physical and Natural Science," under the head of "Forestry," 5 Seniors

[Continued on page 320.]

The Story of the YALE CAMPUS,

Week by week, and term by term, is told and illustrated in the Yale Alumni Weekly. The volume for the year is like a scrap book—but more useful and complete.

We have some complete files for last year—not very many—and a very few of the earlier years. The present price for a bound volume (well done, in black cloth, with index), is \$4.00. The earlier and very rare ones are held at a slight advance.

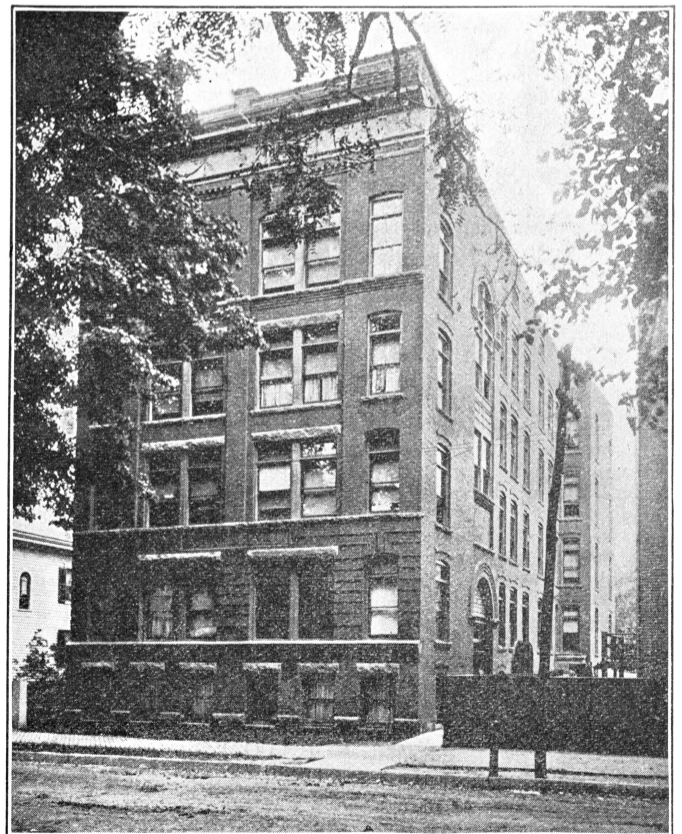
Address simply

YALE ALUMNI WEEKLY,

New Haven.

KENT HALL

Erected 1896.
333 York St., New Haven, Conn.



Modern Apartment House for Yale Students

Containing Forty Rooms for rent, furnished or unfurnished. Prices from \$3.50 to \$5.00 per week. One dollar less unfurnished. This includes personal laundry (exclusive shirts, collars and cuffs), steam heat, light, care of room and local telephone service. The building is situated convenient to the College Campus, the Sheffield Scientific School, and the Law School. There are private dining rooms for clubs in the basement of the building.

Leases are to be signed by parent or guardian. The lease provides, that, in case the student does not become, or should cease any longer to be connected with Yale University, or should have to leave the city by reason of sickness, at any time during the said year, then he may vacate the room and terminate the lease on paying the weekly rent up to the date of vacating it.

Address, FRANK PERRIN, Manager.

.STUDEBAKER.

BROADWAY, COR. PRINCE ST., N. Y.

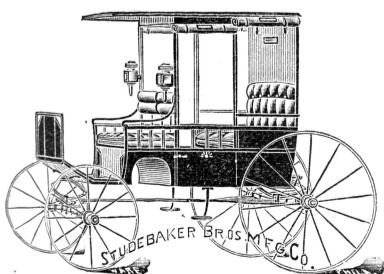
WM. R. INNIS, MANAGER.

Carriage Builders

LARGE VARIETY.

CORRECT APPOINTMENTS.

UNEXCELLED WORKMANSHIP.



No. 1209. Station Wagon.

LIGHT WEIGHT. REASONABLE PRICE.
WELL MADE. FINE FINISH.