

**THE AMERICAN SCHOOL.**

**Its Permanency Guaranteed—Endowment Fund—Fellowship Examination.**

[Correspondence of YALE ALUMNI WEEKLY.]

ROME, Nov. 23, 1899.

The American School, now in its fifth year, justly claims the interest of all American universities, not only as being an American institution in a foreign land, but for the more practical reason that it depends upon them entirely for its membership and very largely for its support. It has passed the experimental stage. This year begins the term of Mr. Richard Norton, as permanent director, and brings to the school as the representative of the American universities in the department of Palaeography and Epigraphy, Prof. Samuel B. Platner, Yale '83, of Western Reserve, to whom with Prof. Frank F. Abbott, Yale '82, of Chicago, belongs the credit of originally planning this school. Efforts to secure an endowment fund are being quietly and systematically prosecuted.

The library is admirably selected and is receiving additions as fast as the friends of the school make it possible. There is a prospect of having in the near future a comfortable and suitable abode, fitted to the growing needs of the school. The number of students is much larger than heretofore, and what is even more encouraging, it is made up from all sections of the country, including Harvard, Princeton, Yale, Cornell, Leland Stanford, Chicago, Wisconsin, Michigan, Washington University (St. Louis), Wellesley and Barnard.

It is fast becoming recognized, that good as is a training in German method and thoroughness, the classical instructor has much to gain from that sense of the reality of the ancient civilizations to be acquired by a protracted residence among the ruins and monuments. The Germans themselves have realized this. Their Roman Institute is a model in many respects. It has a central and commanding position above the Tarpeian Rock, possesses an archaeological library of some 40,000 volumes, and enjoys the liberal support of the government. The French also maintain an archaeological school in Rome, and recently the British Archaeological Society, hitherto represented by traveling fellows from the great universities, has voted to establish one; and, following into line, comes the Russian Academy of Sciences, the historico-philological section of which has completed its plan for the erection of a Russian Archaeological Institution in Rome, which now but awaits the official examination and approbation of the government.

Therefore, there cannot be doubt but that the action of the American committee, in providing a permanent resident director and taking measures for securing an endowment fund, was both wise and timely. The fact that the attractions of the Holy Year and the Paris Exhibition will turn many Americans towards Rome, makes it evident that now is the time to awaken an intelligent interest in a work, which in Europe is considered dignified and important enough to merit the ungrudging support of the several governments.

The methods and record of the school can readily be found in the annual reports published in the American Journal of Archaeology. The work of this year must necessarily be left to a subsequent letter; but before closing just a word about the three fellowships offered annually by the management of the school. The competition, open to the graduates of all American colleges, occurs in the middle of March, and early application should be made by candidates to Prof. Minton Warren of Harvard. The course of reading laid out for the examination is invaluable for any intending to pass the Winter in the school.

A number of the students spent the Summer preceding their stay in Rome, at some of the German university centers. The current opinion that lectures cease about the middle of July is certainly erroneous as regards Berlin and Munich. The writer found the classical and philosophical lectures in full swing till Aug. 2, and enough to keep a student busy until Aug. 8.

GEORGE DWIGHT KELLOGG.

The new Register of Cornell University shows a present enrollment of 2,240 students, an increase of 202 over last year.

**New Geological Club.**

On Saturday evening, Dec. 2, a number of instructors and graduate students met with Prof. L. V. Pirsson, at the Museum, to discuss the advisability of forming a Geological Club. The advantages of such a club were apparent to those present and accordingly an informal organization was perfected and meetings arranged for every two weeks. Membership will be limited to Faculty and graduates interested in some line of Geology. Dr. H. E. Gregory was chosen Secretary.

**TRADE MARK**  
*Monarch*  
**CLUETT, PEABODY & CO.**  
**Full Dress Shirts**

- ready to put on
- they're of faultless fit
- the bosoms never bulge
- the finest garments possible to produce

At Your Furnisher or Clothier  
**CLUETT, PEABODY & CO.**  
Makers

**Who is the LEADER?**

That is an exceedingly hard question to answer in relation to the football season. It has been up and down with nearly all the big elevens all the season—unexpected slumps and unexpected rallies.

The season is not long or varied enough, with conditions as they now are, to establish the place of the different teams. Consider how long it takes in the game of business to establish one house well in the lead of all the others. Years and history are, for instance, back of the great athletic house that supplies nearly all the football elevens and other athletic teams of the country.

**A. G. Spalding & Bros.**

New York. Chicago. Denver.

**COLLEGE MEN**

will find exceedingly comfortable and well kept quarters at a most reasonable price at

**MILLER'S HOTEL**

39 West 26th St., - New York City.

This house is patronized largely by Yale, Princeton, Cornell, Vassar, Wellesley, Smith and other Colleges, to the students of which special rates are made.

SEND FOR CIRCULAR.

**CHARLES H. HAYNES,**  
Proprietor.

**LUCAS**  
OF HAMILTON PLACE  
BOSTON.

**Writing Essays**

Send subject to us and at a small cost we will scour the periodical literature of the world and send you the best comments of the best minds as soon as they appear.

Terms, \$5.00 for 100 notices.

ROMEIKE'S  
PRESS CUTTING BUREAU,  
110 FIFTH AVE., NEW YORK CITY

**Best Line to Omaha**

Comfortable, roomy, wide-vestibuled trains from both Chicago and St. Louis.

The European plan Dining Car service is a special feature of excellence on this line. Delicate china, roses, spotless linen, perfect ventilation and strictly first-class cooking.

P. S. EUSTIS, Gen'l Pass'r Agt., Chicago.

**Do You..**

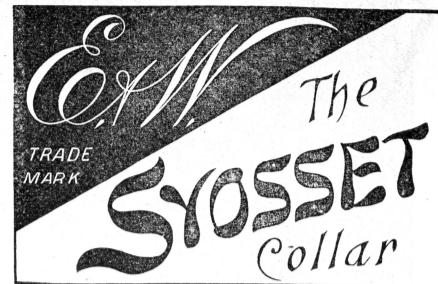
- Want to know everything possible about anything?
- Want to write an article on a special subject?
- Want to save time, hard work, wearying research?
- Want to save money?
- Want to compile a scrap-book on a special subject—scientific, dramatic, biographic, political, social, financial, commercial, historic, economic, or otherwise?
- Want to prepare a response to a toast; speech in a debating club or elsewhere; paper or essay in a literary club, or anything of that nature.
- Want to know anything that is said of you, or anyone else, in print or pictures?
- Want to keep yourself up to date in anything?
- The easiest, surest, quickest, most economical and perfect way is to secure the services of

**THE 20TH CENTURY PRESS CLIPPING BUREAU,**

New York Life Building,

CHICAGO,

Rate, 2c. per clipping.  
Send for Booklet.



In doing business with advertisers, please mention the WEEKLY.

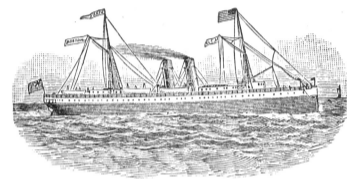
**GO TO THE NEW SUMMERLAND**

COOL, RESTFUL

**Nova Scotia**

By the Most Popular and Direct Route, the

**YARMOUTH LINE**



Fast Mail Express Steamers sail from Lewis Wharf, Boston, at 2 P. M. every Monday, Tuesday, Thursday and Friday, connecting at Yarmouth by boat and train for all points in the Maritime Provinces.

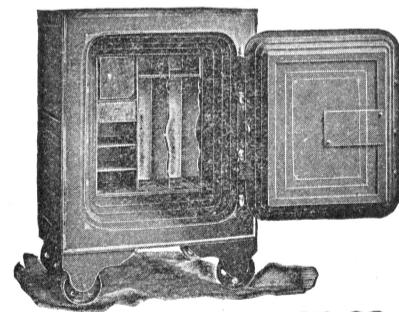
For guide books, descriptive folders, and other information, address

H. F. HAMMOND, Agent,  
**YARMOUTH STEAMSHIP CO.**  
(LIMITED).

43 Lewis Wharf, Boston, Mass., or  
UPTOWN OFFICES:  
201, 296 and 332 Washington St.

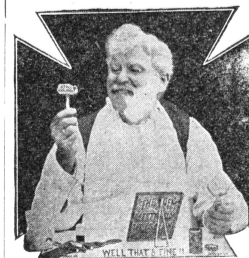
**Mory's - -**

... Louis Linder.



**DIEBOLD SAFE & LOCK CO.,**  
H. W. BEADLE, GEN'L AGENT,  
79 Duane Street, - New York.

**The "New Gem" Safety Razor**



IMPOSSIBLE TO CUT THE FACE.

It's the BEST and SIMPLEST Safety ever devised.

No experience required.

We guarantee and keep them sharp for one year.

Price \$2, Postpaid.

Well, That's Fine!

Send for Illustrated Price List.

**THE GEM CUTLERY CO.,**  
673 Hudson Street, New York.