

YALE ALUMNI WEEKLY

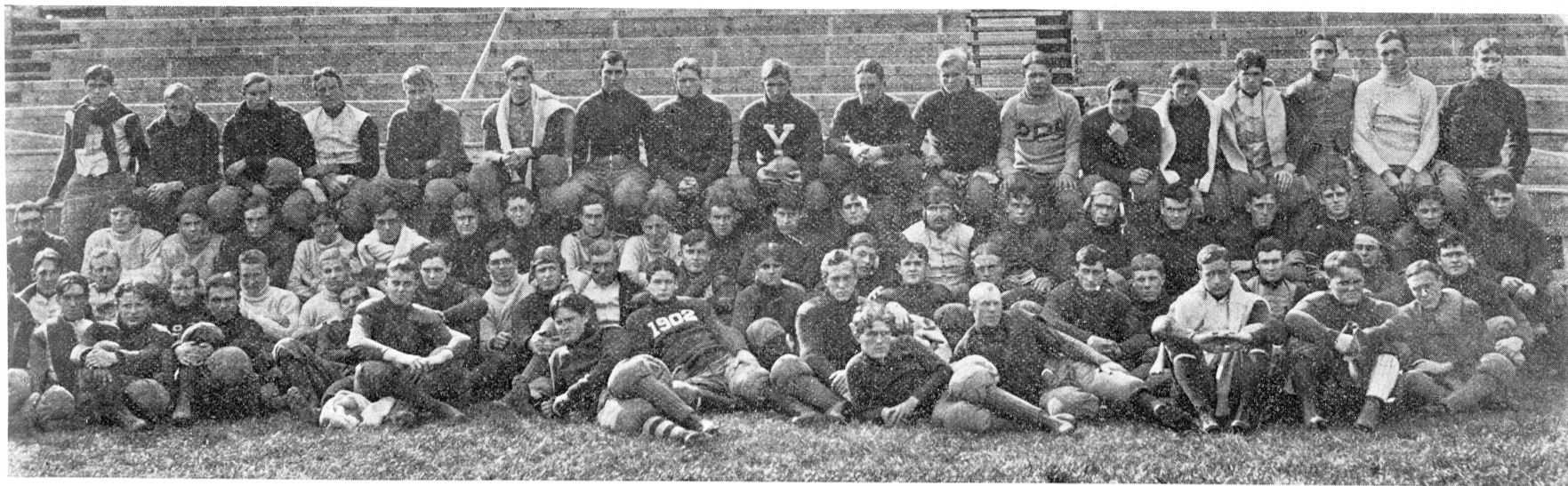
VOL IX. No. 3.

NEW HAVEN, CONN., WEDNESDAY, OCT. 11, 1899.

Copyright, 1899.
by Yale Alumni Weekly.

PRICE 10 CENTS.

YALE UNIVERSITY FOOTBALL SQUAD; 73 MEN.



THE INAUGURATION.

Plans in Detail and Information for Graduates and Guests.

The main plans for the celebration of the inauguration of President Arthur Twining Hadley, Wednesday, Oct. 18, have been completed, and, although there are yet many minor details to be settled, the WEEKLY is able to announce in this issue sufficient data to give an idea of the thoroughness of the general scheme.

For the convenience of those who will attend the celebration, a schedule of the events of the day as they will occur has been printed below, together with all additional information obtainable, which may be of benefit to the graduates and guests of the University.

The graduates and guests will assemble on the Campus, Wednesday afternoon, Oct. 18, at 2 o'clock and will be marshalled in four divisions, as follows:

First division—President and Corporation of Yale, also former members of the latter; (who will assemble in the President's office in the Treasury Building); the Governor of Connecticut and staff; presidents, delegates and professors of other universities and colleges; representatives of the American Economic Association and the principals of high schools and academies (all of whom will assemble in Dwight Hall). The President and Corporation will be at the head of this division, the others coming in the order named.

Second division—Representatives of the Federal Government; representatives of the State Government; governors of other states; bishops; representatives of municipal and local governments; invited citizens of New Haven and other specially invited guests. (These will form in the old Library.)

Third division—The general body of graduates will assemble as at Commencement, in order of graduation, on the walk in front of the Brick Row. This division will be headed by the presidents of alumni associations.

Fourth division—University faculties and former members of the University Faculties will assemble in Alumni Hall. Marshals for all these divisions, and division sections, will be named later. Academic costumes which are becoming more and more common on such occasions, and caps and gowns with appropriate colored hoods, will be generally worn by the Yale Faculty and the representatives of other universities and colleges.

THE SEATING ARRANGEMENT.

When all is ready, these four divisions will direct their course to Battell Chapel, entering the Chapel simultaneously from the four entrances at the West end of the building. The platform will be reserved for President Hadley; ex-President Dwight; the Corporation and Deans of the Faculties of Yale; some presidents of other universities, and the leading representatives of the federal, state and local governments. The remaining college and university presidents, and other representatives of institutions of learning, together with the representatives of the American Economic Association and the principals of the high schools and academies, will occupy the center aisles. A portion of the South center aisle will be occupied by representatives of the federal, state and local governments, the specially invited guests, and the invited citizens of New Haven.

The body of graduates will occupy the remaining part of the South center aisle and the South aisle, as well as the South transept. The North aisle and the North transept will be occupied by the present and former members of the University Faculties. The North and South galleries are reserved for ladies, and will be reached from the College street entrance.

Tickets of admission are being distributed to wives of graduates, officers and guests of the University. When the ceremony begins, the doors will be thrown open and the remaining pews filled with those not in the procession, or those not holding ladies' tickets of admission. The large West gallery will be cleared of its pews and will be occupied by the student chorus of 100 picked voices and the New Haven Symphony orchestra, directed by Professor Samuel S. Sanford and Prof. Horatio W. Parker, of the Department of Music. The most interesting feature of the musical program will be the singing of the Commencement Ode of Edmund Clarence Stedman, Yale '53, which was set to music by Prof. Parker and sung at the Commencement exercises in 1895 for the first time. Herbert Witherspoon, Yale '95, who sang the bass solo at that time, has courteously offered his services as soloist. The orchestra will play a processional as the divisions enter the Chapel.

CHAPEL CEREMONIES.

The ceremonies in the Chapel will include orchestra selections, congregational singing of the Sixty-fifth Psalm to the

York tune, and of Luther's hymn, "A Mighty Fortress." President Dwight will make the opening prayer. President Hadley will be inducted to his office by Rev. Joseph H. Twichell, Yale '59, as senior member of the Corporation, and will then deliver his inaugural address. The congratulatory address on behalf of the Faculties will be delivered by Rev. Prof. George P. Fisher, senior dean of the University. President Dwight will pronounce the benediction.

THE PRESIDENT'S RECEPTION.

After the ceremonies in the Chapel all those taking part, except ladies, will cross the Campus to the Art School, entering it by the door near the Library and by the Chapel street door. The latter entrance will be reached by passing through the Vanderbilt arch and through the large iron gates, which will be open for the occasion. President Hadley will receive guests in the Trumbull gallery on the second floor. The Symphony orchestra will occupy the Jarvis gallery, and will play selections throughout the reception. A collation will be served at 6 o'clock in the rooms of the first floor, which will be all thrown together. Cardani of New York will serve the supper, which is planned to be substantial enough for those who do not intend to dine elsewhere in New Haven. Commodious cloak rooms will be found in the basement of the School.

Trains to and from New Haven.

For the convenience of those who will come from points beyond New York and Boston, and from those cities also, a schedule of the best trains is printed below:

New York to New Haven.

Leave N. Y.,	8.00 A. M.	Reach N. H.,	10.05 A. M.
"	9.04	"	11.00
"	10.00	"	11.30
"	10.02	"	12.00 M.
"	11.00	"	12.50 P. M.
"	12.00 M.	"	1.40
"	1.00 P. M.	"	2.32

New Haven to New York.

Leave N. H.,	7.10 P. M.	Reach N. Y.,	9.00 P. M.
"	8.10	"	10.00
"	9.10	"	11.00
"	11.50	"	2.05 A. M.

Trains between Boston and New Haven.

Shore Line—Leave Boston 9 A. M. and 10 A. M., reaching New Haven at 1 P. M. and 1.25 P. M. respectively. Returning trains will leave New Haven at 6.55 P. M. and 2 A. M., reach Boston at 11 P. M. and 6.25 A. M. respectively.

Boston via Springfield—Leave Boston 5 A. M. (accom.) and 9 A. M., reaching New Haven at 11.50 A. M. and 1.31 P. M. respectively. Returning leave New Haven at 5.52 P. M. and 1.10 A. M., reaching Boston at 10 P. M. and 6.15 A. M., respectively.

Steamers leave New Haven for New York at 10.15 P. M. and 12.45 A. M., occupying about six hours on the trip.

The Student Portion of the Celebration.

The student committees have entered with great enthusiasm into the spirit of the celebration and are planning to make their part of it a success. They have already made arrangements for decorating the interior of the Campus, principally by bunting of the Yale color. After dark the Campus will be closed to all but students, graduates and guests. Every room of the dormitories will show a light as has been traditional at previous inaugurations.

At 8 o'clock marshalling for the torchlight procession will begin, the different classes forming on the various walks of the Campus. Each class and department will be distinguished by differently colored caps and gowns, and transparencies will be carried indicating class numerals and the departments.

GRADUATES IN THE PROCESSION.

Should a sufficient number of the younger graduates desire a place in the line, they are hereby notified that gowns and illumination can be had for them at the cost of \$1 each—with possibly enough left over from an attendance of 100 to furnish a band. Money should be sent to YALE ALUMNI WEEKLY, Treas. at once.

Several striking effects will be introduced suggestive of the meaning of the occasion in Yale's history and of the greetings offered to the President and the University's guests. The means of illumination throughout the procession will be by torches, lanterns and other lights.

It is expected that practically all the students of the University will be in line. The procession aims at academic dignity fitting the importance of the event, and its success or failure will guide the committee in making plans for the larger and more elaborate Bi-centennial celebration.