

YALE ALUMNA WEEKLY

VOL IX. No. 2.

NEW HAVEN, CONN., WEDNESDAY, OCT. 4, 1899.

PRICE 10 CENTS.

FOOTBALL PRACTICE.

J. O. Rodgers Will Act as Supervising Coach.

The quality of football practice of the first ten days at Yale Field has been of a character to give the hope that a team of considerable strength may yet be produced. No particular man can be singled out as having made meteoric progress, but the growth of football knowledge and zeal has been steady among all the men and each succeeding day sees a better practice.

According to the plan of the football management announced in the last WEEKLY the name of the coach who is to have supervision of the team building at Yale this year, was announced on the day after College opened. Few were surprised to read the name of J. O. Rodgers, '98. Mr. Rodgers is now in his Senior year at the Harvard Law School, and though he cannot be here constantly, will be able to give a considerable part of his time to the work. He will have the assistance from week to week of a number of loyal Yale coaches, who come year after year to offer their services.

The training of the backs in kicking and handling the ball has been put in the hands of W. T. Bull, Yale '88 S. Mr. Bull is in his second year at the Yale Medical School, and being right on the ground can give much time to this very important part of the work. The coaches who were back last week were Frank S. Butterworth, '95, and F. T. Murphy, '97. Harmon S. Graves, '94 L.S., is expected to spend a few days this week at the Field.

Since the opening of College the football squad has been augmented by the Freshmen and returning upper classmen until it now numbers fifty-four men. This made possible the scheme of playing four elevens, which was begun on Monday, Oct. 2—a part of the general scheme to give the men some sort of practice instead of sitting along the side-lines. As the men in the two lower elevens show promise they will be moved up to the University and College and be given a chance there. The Freshman material is so green that it cannot be said at his writing just what promise it holds. It will have to be worked over and weeded out considerably to get the best there is, but every man will have a chance to show his metal. As the eleven which will meet Harvard and Princeton will not be chosen till late in the season, several changes from the present make up are quite likely.

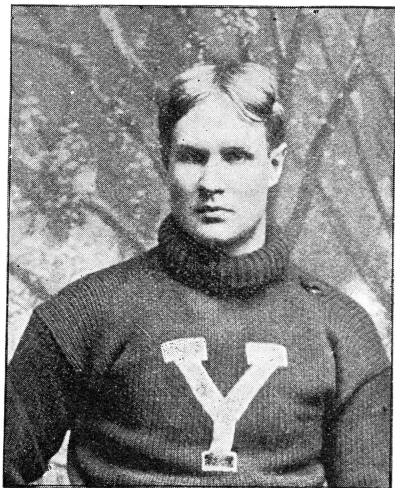
Trainer James Robertson has begun on his stated policy of removing a man at once from the game, who has received an injury. The wisdom of the plan was shown in the case of Cunha, at center, who received a leg bruise in last week's practice, and although it was not serious, he was at once removed and the bruise attended to. He went into his old place on Tuesday, entirely fit.

The men who have had the honor of being designated as the University last week were: Thomas and Gould left-end; Stillman and Hale left-tackle; F. G. Brown, left-guard; Leary and C. Brown, right-guard; Francis and Blagden, right-tackle; Gibson and Coy, right-end; Fincke and deSaulles, quarter-back; Sharpe and Adams, left-halfback; Kiefer and Shattuck, right-halfback; Dupee and Noyes fullback. Captain McBride has been giving his time to coaching and has not played much.

CHANGES IN THE SCHEDULE.

There are two changes from the schedule published in the last issue of the WEEKLY. The All-California team

which was advertised to play in New Haven, Oct 28, has notified Manager Rockefeller that they would be unable to come East. Mr. Rockefeller thereupon acceding to the demands of many New York graduates, filled in the vacant date with the Columbia University football team, at Manhattan Field, New York. This is Columbia's first football team for a number of years. George Foster Sanford, Yale '97 L.S., is coach-



JAMES O. RODGERS, '98.
Supervising Coach.

ing, and hopes to bring a good eleven against Yale.

Another change in the schedule is caused by the failure of the Wesleyan eleven to play at Yale Field, Oct. 11, on account of some Faculty restriction. This leaves the date open.

Yale, 23; Amherst, 0.

The first game of the year for the Yale eleven was played at Yale Field, Saturday, Sept. 30, with Amherst, and was an easy victory by the score of 23 to 0. Yale made three touchdowns in the first half of 20 minutes, and one in the last half of 15 minutes, when all but three of the eleven had been replaced with substitutes. The game showed a surprising strength in offensive play, but a weakness in the defensive. This latter was due principally to the want of team work, which is not to be wondered at so early in the season. The backs, with the exception of Fincke at quarter, held the ball well and ran splendidly. Kiefer made two pretty end runs of 40 yards each with but little assistance, and Sharpe did some good line plunging. It was the first game Sharpe has played behind the line, and though his position was new to him, he handled himself well in whatever he was called upon to do. Capt. McBride was on the side lines nursing a temporary leg injury, Dupee playing at fullback. Dupee kicked well when called upon, but as the principle style of playing was massing to give the line men some practice, there was not much to do. The ball was on Amherst's territory most of the time, and generally very near her goal.

At no time did Amherst get inside Yale's 35-yard line. Four times when the play was within 20 yards of Amherst's goal, and her line unable to hold, Fincke fumbled in passing, costing Yale at least three touchdowns. McConnell's poor work at center was responsible for some of Fincke's bad play on the offensive. On the defensive Fincke played a good game, catching and running finely. Just before the game was ended Ballentine, the Amherst Captain, seized the ball as it lay on the ground after Yale's third touchdown and ran the length of the field, touching it down between Yale's goal posts. The bleachers

were badly scared, but the umpire ruled that the touchdown had been made and the ball was dead before Ballentine got it.

The score and summary:

| YALE. | POSITION. | AMHERST. |
|---------------------------|-------------------|-----------------|
| Thomas Gould | left-end-right | Ballentine (C.) |
| Stillman Hale | left-tackle-right | Gladwin |
| F. G. Brown (Act'g Capt.) | left-guard-right | Burke Jones |
| McConnell | center | Larkin |
| Leary | | |
| C. Brown | right-guard-left | Otis |
| Francis Blagden | right-tackle-left | Morse |
| Gibson | right-end-left | Dudley |
| Fincke deSaulles | quarterback | Anderson Swift |
| Sharpe | left-half-right | Roise |
| Kiefer | right-half-left | Clark |
| Shattuck | | |
| Dupee | fullback | Washburn |

Summary: Yale 23, Amherst 0; touchdowns, Dupee 2, Thomas, Kiefer; goals from touchdown, Sharpe 1, F. G. Brown 2; umpire, W. S. Moyle, Yale '91; referee, Mr. Fitzpatrick of Naugatuck; linesmen, Talcott B. Hull of Yale, F. G. Blanchard of Amherst. Time—first half, 20 minutes; second half, 15 minutes.

New Chapel Services.

The change in the College exercises has gone into operation so smoothly that the break is hardly noticed. Friday was the first morning under the new order of things, there being no Chapel service Thursday morning, the day College opened. President Hadley was on the platform in his robes of office and Prof. Bernadotte Perrin officiated as chaplain, reading a portion of the Scriptures and a prescribed prayer. The appearance of the choir in its new dress, a black robe with an edging of Yale blue cord around the yoke, was a great improvement. Choirmaster Harry B. Jepson will endeavor to have, during the year, more conscientious and thorough work from the members of his choir. There was no change whatever in the Senior bow, as President Hadley walked down the aisle to the door. The life of this old custom seems guaranteed for some years to come.

Intercollegiate Tennis.

Owing to the late arrival of a number of the contestants in the nineteenth annual tournament for the Intercollegiate Tennis Championship, the first matches were not played until Tuesday, October 3. The tournament is being held on the courts of the New Haven Lawn Club. The prospect of fast play throughout the tournament is in no way diminished by the loss to Harvard by graduation of the champions Leo Ware and Malcomb Whitman, as Dwight Davis, Holcomb Ward, E. Marvin and Thomas are equally strong representatives.

In R. D. Little, Alexander and Ogden, Princeton has the strongest team which has represented that University in many years.

The Yale players are H. H. Hackett and J. A. Allen, 1900, and Plummer. Hackett and Allen are expected to do exceptionally well, as their performance this Summer in winning the Western double championship has proven them formidable players.

Joseph T. Whittlesey, Yale '67 S., of New Haven is acting as referee of the tournament.

These are the officers of the Intercollegiate Tennis Association: President, Dwight Davis, Harvard; Vice-President, R. D. Little, Princeton; Secretary and Treasurer, J. A. Allen, Yale.

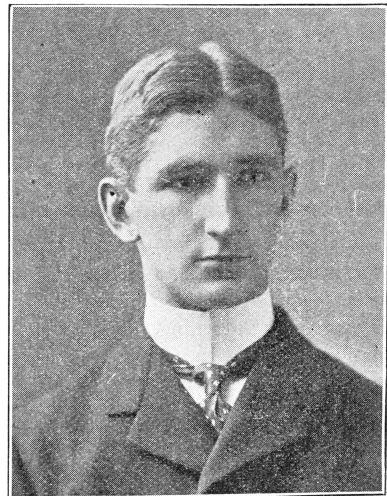
THE RUSHES.

Yale 1903 Shows Up Well—The Sheff. Ceremonies.

The annual Academic Sophomore-Freshman "rush" as it is still called, was held according to custom, Wednesday night, before the opening of College. Although the result was a tie the spirit of the Freshmen seemed a better one than for the last two or three years, on similar occasions, and the wrestling was of the first class. The parade was formed at 7 o'clock in front of Osborn Hall and headed by the Old Guard band marched with the Omega Lambda Chi step to the historic wrestling ground at the Hopkins Grammar School, by the unusual route of College, Crown, York, Elm and High streets. Each man of the seven hundred who were in the line carried a kerosene torch, and not less than 600 of these torches, leaking as only a kerosene torch knows how to leak, scattered oil, sometimes lighted, indiscriminately over the heads and clothes of the zig-zagging crowd.

Arrived at the wrestling ground, Captain McBride of the football team and Captain Allen of the crew took charge of the ceremonies. Morris U. Ely, '98, was the umpire. The Freshmen were slow in responding with a candidate for the light-weight match, but finally George Spencer of Watertown, N. Y. came forth and met John B. Hart of Cincinnati, O. These men were so evenly matched that the time-limit expired before either showed he was the man. In the second bout Spencer was fortunate enough to get a hip-lock on his opponent and threw him neatly in 2 minutes and 13 seconds. In the third bout Hart reversed the previous result, with a similar trick of the hip, in 59 seconds. This event was, therefore, a draw.

The middle-weight contest was easy for R. A. Lincoln, 1902, who threw Payne, the Freshman representative,



MALCOLM L. MCBRIDE, 1900.
Captain Yale Football Eleven.

but the heavy-weight contest was exciting. C. B. Francis was the Sophomore, who was looked upon as able to throw any two of the incoming class, and his formidable appearance caused a long delay and much debate in the Freshman ranks. Finally George Goss of Waterbury was prevailed upon to get into the sanded arena. "I never wrestled in my life," said he to a friend, while getting ready, "what shall I do?" "Throw him," was the reply, and Goss, remembering that he played a good game at guard on the Hotchkiss eleven,