

THE FOOTBALL SEASON.

Preparations Carefully Made for Developing the Best Material.

The football season at Yale fairly opened on the 20th of this month with the arrival of the early candidates for the positions on the team. The names and the places which they will try for are given lower in this column. It will be seen that no candidates from the incoming Freshman class appeared for the preliminary practice. These will not be called out until College opens. It is felt that this is keeping closer to the



PROF. JOHN C. SCHWAB,
Faculty Chaplain.

plan which the colleges are trying to make effective, of preventing vacation work. There has been no Summer practice this year.

No athletic season has opened at Yale in which the alumni and his friends were more deeply interested. The Yale athletic records of the past year are too familiar to need any reference. Yale has been quite as conspicuous for her failures for the past twelve months as she used to be for her unbroken successes. The record in England, where Yale didn't win anything, capped the climax on the most disastrous season that the University has seen during the history of modern athletics.

Mr. McBride, the Captain of football for the year, realized, even before the disasters of last Summer overtook Yale, how great the task of creating a football team here would be. In conjunction with Mr. Rockefeller, the manager, he was in consultation all last year with football men as to the best policy for the next season. He has had his plans very well in mind for a considerable time, but has desired consultation with a few football experts whom he has hitherto been unable to reach, before he definitely adopted and announced his program. This has not meant that anything has been omitted that might have been done towards preparing for the season. On the contrary, the ground has been well covered and all assistance which could be promised in advance is already guaranteed for the next two months of hard work.

While the severe reverses of the last two years have made Yale anything but over-confident as to her own powers, there is a great deal of satisfaction with the way in which the season has opened. Those who are familiar with the plans which have been made by Mr. McBride and Mr. Rockefeller see that they are planning not only for this year, but for years to come, and that they are trying to put the right spirit into the work and the right spirit into the men. If, for instance, they lose some good players by the application of the 2.25 rule, it is only fair to say that whatever happens in this direction has come about in spite of the most careful system of warning which a football management ever adopted. Last Spring and Summer the men were spoken to and written to over and over again, and urged to bring their stands up to the highest possible point to avoid any difficulties in this respect. If any have failed to comply with this, it is their own fault and not the fault of the management. The management, on the other hand, will not be disposed to criticize the Faculty, if they are forced to apply the rule.

It will not be the policy this year to spend too much time on candidates who have only a short time more to stay in College, or to try to develop men whose future career in College is doubtful, owing to low stand or other irregularities. The plan will be to get at all the material of the right kind in the under classes that possibly can be gathered, giving everybody a chance. An attempt will be made also to develop Yale football training again on lines where it can be taken up next Fall at the point where it will be left off at the end of this season.

A THIRD GRIDIRON.

One of the best moves of the Football management this Fall is the determination to lay out a third gridiron on the Field. Part of it will be in the right field of the baseball section. The plan is to have not only a University eleven and a second eleven, but third and fourth elevens playing each day. The playing of all the men will be carefully watched and good play on the third or fourth will promptly advance a man to second or University position. These four elevens and the two Freshman teams will mean at least seventy men playing every day.

THE BROWN GAME OMITTED.

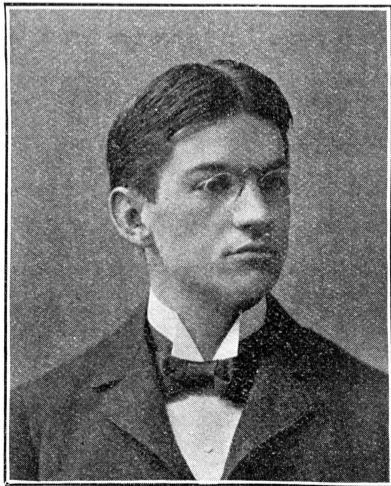
Some comment has been caused by the fact that Yale schedule for the year omits a game with Brown. The Brown game has been, for a number of seasons, one of the liveliest of the home games. On more than one occasion the contest has been quite close enough for the interests of a Yale audience. Although last year the score was heavily against Brown, on the whole it has been a hard game, and one that has done Yale much good.

Of course there have been those who have been quick to say that Yale felt she had all she could do this year to handle teams which she was obliged to meet, and that she had taken the opportunity to unload any hard game which she could avoid. This is hardly the way in which Yale goes about to repair football fortunes, and those who understand the situation, have no such suspicions as to the motive of the management. It is a matter on which it is unnecessary to go into details, but it may be said that it is purely a failure to agree on business arrangements for the game. Some change was desired which Yale did not think she could properly allow, and as the two managers could not adjust their differences the matter was dropped. It is unnecessary to say that there is no unfavorable feeling towards Brown, but simply a general regret that it is not possible to have the Brown game on the list this year.

THE CANDIDATES.

Thirty-eight candidates were notified to be ready for practice on Sept. 20. The positions these men will try for, and the names of the men are as follows:

Center—W. J. McConnell, L.S.; A. R. Cunha, L.S.; J. A. Wade, P.G.; H. Walton, 1900 S. Tackles—D. R. Fran-



PROF. WILLIAM LYON PHELPS,
Faculty Chaplain.

cis, 1900; C. P. Cook, 1901 S.; G. S. Stillman, 1901; A. S. Blagden, 1902; T. Kelley, 1900 S.; R. A. McGee, 1900 S.; T. A. Leary, 1900; H. Richards, 1900 S. Ends—J. S. Eells, 1901; F. M. Van Wicklen, 1901; G. Abbott, 1902; R. J. Schweppe, 1900; C. E. Ordway, 1900;

C. E. Brinley, 1900; L. M. Thomas, 1901; H. Richards, 1900 S. Quarterbacks—C. E. Sullivan, 1900; Keyes Winter, 1900; W. M. Fincke, 1901 S. Backs—G. W. Noyes, 1902; C. Dupee, 1901; P. S. Hall, 1901 S.; T. S. Adams, 1901 S.; L. M. Thomas, 1901; J. H. Wear, 1901; H. Auchincloss, 1901; R. T. Townsend, 1900 S.; J. C. Phillips, 1900; G. W. Shattuck, L.S.; F. E. Whitney, 1901 S.; C. T. Dudley, 1900 S.; A. H. Sharpe, M.S. Guards—F. G. Brown, 1901; A. J. Young, 1901; W. R. Rawlins, L.S.; J. F. Tomlinson, 1901.

FIRST PRACTICE.

The first day's practice of the season, on Wednesday, was of the lightest character, the heat of the day making long or trying work out of the question. None of the expected coaches arrived and but twenty out of the thirty-eight candidates had their suits on. Captain McBride gave his entire attention to training the new backs in handling punts, and running and blocking in pairs. Two pairs of ends were tried, alternately, following punts down the field, but were warned to do no tackling. Judged from the standard of the first day, the work was good. The men are not particularly heavy with one or two exceptions, but they appear to have plenty of dash in their composition, and are eager to learn. They will take a great deal of coaching, however. The line men, with the exception of the ends, were taken in charge by Trainer James Robinson and given dummy-tackling practice and passing the ball.

On Thursday, Friday and Saturday additional candidates arrived and joined the squad which numbered at the close of the week thirty-six men. As far as can be judged at this time, the material is about the average, possibly a little below. There seems to be a lack of good heavy line material, but the back field looks encouraging.

Coaches W. T. Bull, '88 S., and J. O. Rodgers, '98, were with Captain McBride since Thursday and F. S. Butterworth, '95, and F. T. Murphy, '97 are expected Sept. 25, to stay six or seven days.

The announcement of the head coach will be made by the management when College opens.

YALE SCHEDULE.

The Yale schedule for the season follows:

Saturday, Sept. 30.—Amherst at New Haven.

Wednesday, Oct. 4.—Trinity at New Haven.

Saturday, Oct. 7.—Bates College at New Haven.

Wednesday, Oct. 11.—Wesleyan at New Haven.

Saturday, Oct. 14.—Dartmouth at Boston.

Saturday, Oct. 21.—University of Wisconsin at New Haven.

Saturday, Oct. 28.—All-California at New Haven.

Wednesday, Nov. 1.—Williams at New Haven.

Saturday, Nov. 4.—West Point at West Point.

Saturday, Nov. 11.—Pennsylvania State College at New Haven.

Saturday, Nov. 18.—Harvard at Cambridge.

Saturday, Nov. 25.—Princeton at New Haven.

Princeton Schedule.

Princeton's schedule has been announced as follows:

Oct. 6.—Maryland Athletic Club at Baltimore.

Oct. 7.—United States Naval Academy at Baltimore.

Oct. 11.—Lafayette College at Princeton.

Oct. 14.—Columbia University at New York.

Oct. 18.—Pennsylvania State College at Princeton.

Oct. 21.—United States Military Academy at West Point.

Oct. 25.—Lehigh University at Princeton.

Oct. 28.—Cornell University at Ithaca.

Nov. 4.—Brown University at Princeton.

Nov. 8.—North Carolina University at Princeton.

Nov. 11.—Carlisle Indians at New York.

Nov. 18.—Washington and Jefferson College at Princeton.

Nov. 25.—Yale University at New Haven.

U. of P. Football Schedule.

Wednesday, Sept. 27.—Franklin and Marshall at Franklin Field.

Saturday, Sept. 30.—Lehigh at Franklin Field.

Wednesday, Oct. 4.—Bucknell at Franklin Field.

Saturday, Oct. 7.—Brown at Providence, R. I.

Wednesday, Oct. 11.—Virginia at Franklin Field.

Saturday, Oct. 14.—Indians at Franklin Field.

Wednesday, Oct. 18.—Wesleyan at Franklin Field.

Saturday, Oct. 21.—Lafayette at Franklin Field.

Saturday, Oct. 28.—Chicago at Chicago, Ill.

Saturday, Nov. 4.—Harvard at Franklin Field.

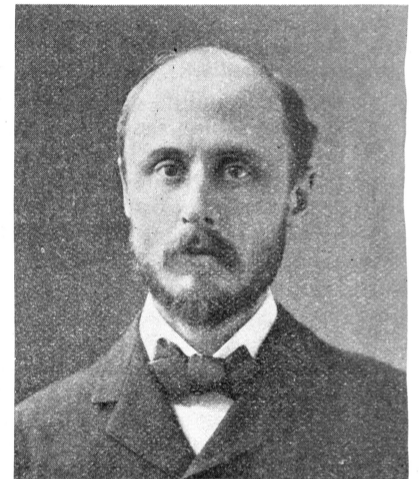
Saturday, Nov. 11.—Michigan at Franklin Field.

Friday, Nov. 17.—State College at Franklin Field.

Thursday, Nov. 30.—Cornell at Franklin Field.

Opening of the University.

The Academical Department begins its work of the Fall term with Chapel services Thursday morning, Sept. 28, but in accordance with the precedent of three years, the first recitations for the three upper classes will not take place until 2 o'clock in the afternoon. Freshmen will register at Alumni Hall at 2 o'clock and the Class will be organized at the



PROF. CHARLES SEARS BALDWIN,
Faculty Chaplain.

same place two hours later. Their first recitation will be held Friday morning.

In the Sheffield Scientific School recitations begin at noon Thursday, and in the Law School at the same day and hour.

Dean Wayland of the Law School is still in Europe, where he has spent the Summer, but is expected home Oct. 6.

The Medical School opens its doors for recitations, Oct. 5, at noon. Work is begun in the Divinity School Thursday morning, Sept. 28.

Berkeley's New Location.

The Berkeley School opens for its twentieth year, Monday, October 2, in its new building on the old Columbia College site, Madison avenue and Forty-ninth street. The building is the southern half of what was formerly known as "Hamilton Hall," entirely remodelled for the purposes of the school, affording the amplest room for two hundred boys, the number to which Berkeley School is limited.

The Preparatory School for Berkeley will be on the opposite corner, and, in addition to the new laboratories, manual training rooms, drawing and elocution rooms, there is being built an armory and gymnasium, measuring nearly 100 by 65 feet, with a swimming-pool in a room 50 by 20 in the rear, making the most complete equipment possible for a city school. All the pupils have the use of the Berkeley Oval as the school playground as heretofore.

With the accession of Mr. Anson Phelps Stokes, Jr., as Secretary of the University, Berkeley School now has two representatives upon the Yale Faculty, Charlton M. Lewis, Professor of English, is the other. Another Berkeley Yale professor was Dr. Graham Lusk, Professor of Biology, who resigned last year to go to Bellevue.