

HARVARD WON SERIES.

Deciding Game Played in New York, July 1.

Harvard won the series with Yale by taking the deciding ball game in New York, Saturday, July 1, in a most exciting match. She won out through steadier work and improving play from the first game, when Yale shut her out on her own grounds without a run. Yale's work seemed to fall off in the latter part of the season and was less sure and steady than in the first of the championship games. Brief sketches of each game follows:

Harvard, 6; Yale, 2.

[Special Correspondence of ALUMNI WEEKLY.]

CAMBRIDGE, June 22.—Captain deSaulles' team defeated the Harvard nine on Soldiers Field this afternoon in the opening game of the annual series by a score of 2 to 0. It was the first time in eleven years that a Harvard nine has been shut out by Yale upon the home diamond.

The story of the game is briefly told in one inning, and Quinby is the hero of the tale. For seven innings the two nines had been blanked, the rival pitchers dividing honors, and the fielders playing an all but errorless game. But, to a careful observer, it was evident that the Yale pitcher was outlasting his opponent. Gradually the Yale batters were finding the ball. The only question was how long Fitz would be able to prevent them from hitting safely. In the seventh, two of the Yale batters had rapped out long flies to the fielders. At the opening of the eighth, Fitz sent Eddy to first on balls. Robertson promptly smashed out a single to right.

Yale was at last awake, and Fitz weakened momentarily. A wild pitch, which even Reid's magnificent backstop work could not capture, advanced both runners. With men on second and third and no one out, Captain deSaulles had two strikes called and then popped a fly to pitcher in an attempt to bunt. Quinby followed him and two strikes and three balls were called while the audience was hushed in suspense. The next ball went sailing in to center field for a clean single. Eddy raced home, but Robertson seemed by no means sure to arrive in time. Loughlin fielded the ball in well, but it struck Eddy's bat which lay in front of the plate and escaped Reid while Robertson came in and Quinby reached third. Then Fitz braced and retired Wear and Wallace on strikes.

The summary:

YALE.					
	AB.	R.	IB.	PO.	A. E.
deSaulles, 2b.	4	0	0	4	3 0
Quinby, 3b.	3	0	1	1	3 0
Wear, cf.	4	0	0	2	0 0
Wallace, rf.	3	0	2	1	0 0
Camp, ss.	4	0	0	0	2 0
Sullivan, c.	4	0	0	5	2 0
Waddell, 1b.	4	0	1	12	0 0
Eddy, lf.	3	1	1	1	0 1
Robertson, p.	3	1	1	1	4 0
Totals	32	2	6	27	14 1

HARVARD.					
	AB.	R.	IB.	PO.	A. E.
Loughlin, cf.	4	0	1	2	0 0
Sears, lf.	3	0	0	1	0 0
Haughton, 1b.	4	0	0	5	0 0
Reid, c.	4	0	1	10	0 0
Galbraith, ss.	3	0	0	3	2 1
Dibblee, rf.	3	0	1	0	0 0
Clark, 3b.	3	0	0	1	0 0
Fincke, 2b.	3	0	1	4	2 0
Fitz, p.	3	0	1	1	3 0
Totals	30	0	5	27	7 1

Score by innings:

	1	2	3	4	5	6	7	8	9
Yale	0	0	0	0	0	0	0	2	0-2
Harvard	0	0	0	0	0	0	0	0	0-0

The summary: Three-base hit—Reid. Double plays—Camp, deSaulles and Waddell; deSaulles and Waddell; Galbraith and Fincke. First base on balls—Wallace, Quinby, Eddy. Hit by pitched ball—Sears. Struck out—By Fitz—deSaulles, Quinby, Wear (3), Camp, Waddell, Robertson, Wallace, Sullivan; by Robertson—Loughlin,

Sears, Haughton, Reid, Galbraith. Wild pitch—Fitz. Time of game—Two hours four minutes. Umpire—Hunt. J. WESTON ALLEN.

Harvard, 4; Yale, 3.

Harvard won the second ball game of the series with Yale, Tuesday, June 27, on Yale Field before a Commencement crowd of over 7,000 spectators. In the first inning Harvard began the play in a whirlwind manner and before Yale had fairly realized it had scored three runs, to which they added another in the third inning. This was a lead that Yale could not overcome, although she played fast and hard ball from the third inning to the end of the game. Harvard did not get a man to first base in the last four innings. Robertson pitched a good steady game, striking out four men. His worst mishap was the filling of the bases in the first inning by striking Haughton.

Harvard made her runs in the first in this way: Loughlin bunted the first ball thrown and dropped it right in front of the plate. Sears did a similar neat bit of work, and Robertson, on the second ball to Haughton, hit him on the arm, Loughlin scoring. Galbraith sent out a clean single over second base and Sears and Haughton scored. The side was then retired.

Galbraith was responsible for Harvard's run in the third, when his liner to left field scored Sears.

Yale did not get a run till the sixth inning. Then Camp and Sullivan led off with singles, Waddell sacrificed and Eddy with a splendid three-base hit to left field scored Camp and Sullivan. They were not able to continue in this vein, however. Cook, who had taken Wear's place at center, who was lame, drove a beautiful liner over left field's head and scored a home run in the ninth. The bases were unfortunately empty at the time.

The Classes of '79, '89, '93, '93 S., '96, and '96 S., back for their reunions and provided with brass bands and distinguishing clothes and head gear, made the hour before the game resonant and kaleidoscopic. There were marchings and counter-marchings on the outfield of the diamond, to the accompaniment of a half a dozen different marches in as many different tempos. When the game began pandemonium reigned only between the innings. But all of it couldn't win.

The score:

YALE.					
	AB.	R.	IB.	PO.	A. E.
deSaulles, 2b.	4	0	2	2	4 0
Quinby, 3b.	2	0	0	2	4 1
Cook, cf.	2	1	1	1	0 0
Wear, cf.	3	0	0	0	2 0
Wallace, rf.	3	0	0	2	1 0
Camp, ss.	4	1	2	0	6 0
Sullivan, c.	4	1	1	5	1 0
Waddell, 1b.	5	0	0	13	0 1
Eddy, lf.	3	0	2	2	0 0
Robertson, p.	4	0	0	0	1 1
Totals	34	3	8	27	19 3

HARVARD.					
	AB.	R.	IB.	PO.	A. E.
Loughlin, cf.	3	1	2	2	0 0
Sears, lf.	2	2	1	0	0 0
Haughton, 1b.	4	1	1	11	0 0
Reid, c.	3	0	0	9	2 0
Galbraith, ss.	4	0	1	1	6 1
Dibblee, rf.	4	0	1	0	0 0
Clark, 3b.	4	0	0	1	0 0
Fincke, 2b.	4	0	0	3	3 0
Fitz, p.	3	0	0	0	1 0
Totals	31	4	6	27	12 1

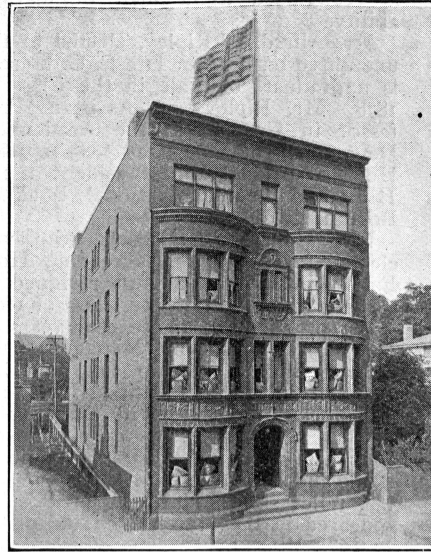
The score by innings:

	1	2	3	4	5	6	7	8	9
Yale	0	0	0	0	0	2	0	0	1-3
Harvard	3	0	1	0	0	0	0	0	0-4

Summary: Home run—Cook. Three-base hit—Eddy. Two-base hits—Loughlin, Dibblee. Struck out—Robertson 2, Wear, Wallace 2, Clark, Loughlin, Haughton, Galbraith. Stolen bases—deSaulles, Quinby, Camp 2, Sears. Hit by pitched ball—deSaulles, Sullivan, Sears 2, Reid. Base on balls—Off Fitz 6. Left on bases—Yale 12, Harvard 5. First base on errors—Yale 1, Harvard 2. Double play—deSaulles to Waddell. Time of game—Two hours thirty minutes. Umpire—Hunt.

Harvard, 13; Yale, 10.

The deciding game of the series went to Harvard at the game on the Polo Grounds, New York, July 1. Both



Student Apartments for Rent in

THE HART,

110 WALL STREET,

FORTY ROOMS IN SUITES OF TWO, THREE OR FOUR ROOMS.

BUILT EXPRESSLY FOR YALE MEN IN THE SHEFFIELD SCIENTIFIC SCHOOL

One Minute's Walk from the School.

All rooms completely furnished. Electric Lights. Steam Heat. Hot and Cold Water. Open Fireplaces. Letter Chute. Elegant Bathrooms and Shower-bath on each floor. Telephone and Messenger service.

A few choice suites and single rooms still open for rent for the Term of 1899-1900.

S. W. HART, Prop. C. W. DRAKE, Manager.

teams were so anxious to win that they did not play their best game. Yale made more errors than Harvard and so lost the game. Robertson was hit fifteen times, but aside from the first inning, when the Crimson batters got the same sort of a start on Yale as they did on the preceding Tuesday, had good control, giving only one man his base on balls. deSaulles, Quinby and Camp made some very bad errors which contributed to the result. There were about 7,000 spectators present.

Yale made six runs in the second inning by the fine batting of Sullivan, Wallace, Cook and Camp, the latter making a three-base hit, which brought in three of the runs. Harvard tied the score in the fifth, and again in the sixth, but Yale took the lead in the seventh and made her two last runs by a two-base hit by Camp, which scored deSaulles and Quinby. Harvard tied in the eighth, through a wild pitch of Robertson's and a bad throw to first by Quinby and in the last half of the ninth she made three more.

The score:

HARVARD.					
	R.	H.	PO.	A.	E.
Loughlin, cf.	2	2	1	0	0
Sears, lf.	1	1	2	0	1
Haughton, 1b.	1	1	10	0	1
Reid, c.	2	2	6	1	0
Galbraith, ss.	2	1	1	7	0
Dibblee, rf.	1	1	1	0	1
Clark, 3b.	1	3	1	0	0
Fincke, 2b.	2	3	5	2	0
Fitz, p.	0	0	0	0	0
Morse, p.	1	1	0	0	0
Totals	13	15	27	10	3

YALE.

	R.	H.	PO.	A.	E.
deSaulles, 2b.	2	1	4	5	2
Quinby, 3b.	0	2	0	2	1
Camp, ss.	0	2	0	3	3
Sullivan, c.	1	1	5	2	1
Wallace, rf.	1	1	2	1	0
Cook, cf.	0	1	0	0	0
Waddell, 1b.	2	1	12	0	0
Eddy, lf.	1	0	2	0	0
Robertson, p.	1	1	0	4	1
Totals	10	8	27	16	8

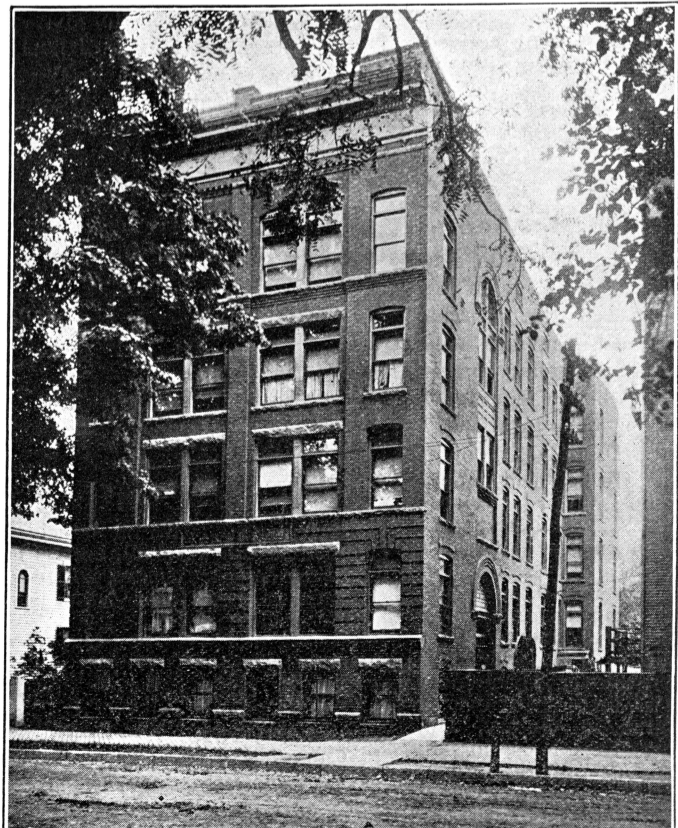
The score by innings:

	1	2	3	4	5	6	7	8	9
Harvard ...	2	1	0	1	3	1	0	2	3-13
Yale	0	6	0	1	1	0	2	0	0-10

Summary: Two-base hits—Clark, Fincke, Camp. Three-base hit—Camp. Stolen bases—Loughlin, Fincke, Waddell, Wallace. Sacrifice hits—Galbraith, Haughton, Fitz, Camp, Sullivan. First base on balls—Off Fitz 3, off Morse 8, off Robertson 1. Struck out—By Morse 3, by Robertson 2. Double plays—deSaulles and Waddell; deSaulles (unassisted). Passed ball—2, Robertson 1. Hit by pitched ball—Sullivan. Wild pitches—Fitz 1, Morse Quinby, Sears. Time—Three hours and ten minutes. Umpire—Hurst.

The Princeton Track Association has recently decided to send a team of from twelve to fifteen men to the Olympic games to be held in Paris during the world's Exposition in 1900.

KENT HALL, No. 333 York Street.



Students' Modern Apartment House, containing forty rooms for rent. Furnished or unfurnished. Prices, \$2.50 to \$5 per week. This includes steam heat, light, care of room, local telephone service, personal laundry. Rooms taken for the college year of thirty-nine consecutive weeks. The building is situated convenient to both the College Campus and the Sheffield Scientific School. Application for rooms may be made to

FRANK PERRIN, Manager.