

We venture to think that such an athletic meeting will prove very desirable for many reasons. We should be very glad to welcome you to our land. Such international athletic sports between the two leading universities of Great Britain and the United States could not fail to rouse the highest interest of all lovers of amateur sport, and could not fail to improve the status of amateur athletics in both countries, or to revive the kindly feelings engendered by the visits of former years of Yale to Oxford and Cambridge to Yale. We would suggest the following conditions for your approval:

(1.) That the meeting take place at the Queen's Club, London, on some date at the end of July, 1899, which may be most convenient to you and to the Queen's Club, with regard to competitions.

(2.) That the programme shall be the regular Oxford-Cambridge programme of nine events, subject to the following modifications: (a) That a half-mile run be substituted for putting the weight. (b) That in the 120-yard hurdle race the flights of hurdles should not be fixed with regard to competitors.

(3.) That all the four universities concerned may choose representatives only from actual students now in residence and on the college books of membership.

(4.) That such representatives, to be eligible to compete, must conform in all respects to the rules and regulations which govern the athletic sports respectively of Oxford and Cambridge and Harvard and Yale.

(5.) That such representatives shall have never received pecuniary assistance towards their support and maintenance as athletes during any portion of their university career or any period prior thereto.

(6.) And generally, that such representatives must be in all respects amateur athletes absolutely and essentially in accordance with the definitions of amateur athlete as laid down by the Amateur Athletic Association of Great Britain, and the similar governing association of athletics in America.

(7.) That the appointed stewards of the meeting authorized to act for the four universities concerned be requested to lodge with the Honorary Secretary of the Amateur Athletic Association in London, on some date prior to the above meeting, lists of the selected teams, together with certificates that each member of said teams is a *bona fide* student and a *bona fide* amateur athlete.

Having thus formulated our views, we submit them to your favorable consideration and are prepared to leave any minor details to be adjusted between us at some later day. We must ask you to kindly cable a reply at your earliest convenience, so that we may be able to immediately secure the Queen's Club ground, and to make at once arrangements of as personal character which any delay might render impossible.

We remain yours very truly,

GILBERT C. VASSAL,

President Oxford University Athletic Club.

ALLAN HUNTER,

President Cambridge University Athletic Club."

AT GALES FERRY.

Crew in Good Condition—Coachers who are Present.

[Special Correspondence of ALUMNI WEEKLY.]

GALES FERRY, CONN., June 12, 1899—Last week Yale's oarsmen began their final period of training, preparatory to the races with Harvard over the Thames course, June 29. On Monday at noon the members of the University crew and the substitute four left New Haven on the yacht Parthenia, as guests of Mr. A. Hart McKee, Princeton, '89, of Pittsburg, and Mrs. McKee. Recitations in the Academic Department did not close until Wednesday, but the Eight were allowed to leave work three days early in consideration of their clean attendance records during the past few months. The Parthenia dropped anchor off Gales Ferry at about four in the afternoon, after a delightful run, and the launch Yale, which had arrived the previous day, in charge of Captain

Dadmun, came out to meet the Crew and take them to the dock. The old quarters, Broadview, Captain Christopher Brown's home, were again utilized. The boats had arrived on Sunday in charge of boatman John Kennedy, over the newly completed Norwich Branch of the New York, New Haven and Hartford Railroad. The tracks of this road are about a hundred and fifty yards back of Broadview, but run through a cut so that the passage of trains is not at disturbing. This new road, by the way, has wrought a great change in the appearance of the East bank of the Thames, cutting off coves and points and spoiling the line of trees and shrubbing along the water's edge. It should, however, afford excellent accommodations for a observation train, as it follows the line of the course closely, except just at the finish, and there are no obstructions to the view at any point.

THE DAY'S WORK.

The usual routine of Gales Ferry life does not change much. The men are up at seven and breakfast half an hour later, after a short walk. The time of the morning row depends on the weather conditions and the examination program, but usually starts about nine o'clock and last for an hour. Dinner, the second of the four meals each day, comes at one o'clock. The time before and after, unless occupied by examinations, which are being conducted by Dr. E. B. Reed, of the English Department, or the study which they involve, is generally spent in loafing under the trees and in the pavilion over-looking the Thames, but the more energetic go out for an occasional ride in the launch and play ball on the lawns. Half-past four is the hour for lunch, which consists of cold oatmeal, toast and milk, and between six and seven the hardest work of the day, the evening row, begins. Supper is ready on the return to Broadview and at half past nine after a short walk which closes the day's work, the men are ready for bed.

With the exception of the extreme heat of Tuesday, Wednesday and Thursday, the weather conditions at Gales Ferry have been ideal, and the water at all times well adapted for rowing. The morning practice in general has consisted of a number of short stretches covering some five or six miles in all. The evening work has been considerably longer and harder. On Tuesday and Friday, the Eight were sent over the four mile course, starting at the finish under the bridge, and rowing up stream. On the other days, the work has been confined to a succession of short pulls, varied with an occasional mile against time. No time records have been given out, but they are thought to have been fair. Mr. Alfred Cowles, '86, was at Gales Ferry when the Crew arrived and Mr. R. A. Armstrong, '95 S., came up from New Haven on the Parthenia. They took charge of the coaching from the launch on Tuesday and were joined by Dr. E. F. Gallaudet, '93, on Wednesday and Dr. Percy Bolton, '86 S., on Friday. During the early part of the week considerable attention was devoted to the individual members of the Crew, especially to those on the starboard side of the boat and a great improvement in regularity was made. At present the coaches are working primarily to secure a firm, hard, catch and instructing the men in keeping their slides moving on the far reach. Considerable power is manifest in the boat, but as yet the men have failed to develop the necessary snap.

All the Eight and substitutes are in excellent condition, sun-burned shoulders being the only source of complaint. The weights are well up.

THE SUBSTITUTE FOUR.

The substitute four were forced to confine their work to the pair oar until Friday, when their shell, a fine little craft, arrived from Davy of Cambridge. On Saturday they had their first row as a four and went well.

On Friday, June 9, the Freshmen accompanied by James Ireland, 1900 S., their coach, arrived, and are quartered in a house a hundred yards back of Broadview. The squad includes War-mouth, 8; Blagden, 7; Hooker, Captain, 6; Sharpe, 5; Kunzig, 4; Lincoln 3; Ackley, 2; Holt, bow; Armstrong, coxswain, and Laws, Judd, Swan, Benner and Wade, substitutes.

THE PRESIDENT-ELECT'S STAND.

Some Parts of his Platform as Shown in a Speech.

[From an address before the New York Alumni Feb. 14, 1898.]

When we want to inquire about Yale, we generally inquire of the New York alumni. So I will present but a plain, straightforward statement of work and hopes. Yale has an annual income of \$600,000, and Harvard has \$1,200,000, yet we are progressing on the same plane, and are still in the same class. It has its advantages. Poverty makes a man work harder. President Lincoln, when an army officer once asked him how Garfield was able to clear Kentucky of Confederates in a week, and the officer sneeringly said, "Because he was not a West Point man, I suppose you will say," he replied, "Because he always had to work for a living."

An especially healthful manifestation of the Yale spirit is seen in the matter of temperance. I know of no place in the world where a boy can pass from the protection of his home life into the large life of society, with more to support him and less to drag him down. If a boy goes to Yale with the intention and desire of refraining from the abuse of intoxicants, he will find more help from the public sentiment of his fellows than in any other college I know, and much more than if he goes directly into business life without attending college at all. As an under classman expressed it to me the other day: "Excessive drinking queers a man for the best societies faster than almost anything else."

If a boy believes that he can best secure himself from temptation by total abstinence, he will find many others who are doing the same thing. If he preaches such abstinence not as a protection to himself, but as a help to his fellows, he will be respected and honored for so doing. But if he demands strict rules to render such action compulsory upon others, he will find himself

The More Exacting

You are the better we like it. All our stock is picked with special reference to people of exacting taste.

This is especially true of our underwear this season. We will be surprised if you cannot be suited in some one of our lines.

CHASE & CO.,

NEW HAVEN HOUSE BLOCK.

Henry Heath Hats.

☞ Samples can go anywhere the Alumni Weekly can go.

in a hopeless minority. The mass of the College world—students and Faculty alike—believe that public sentiment counts for more than rules, both for securing honesty in athletics and temperance in drinking. It believes furthermore that the enforcement of rules and the espionage connected with them so weakens a healthy public sentiment as to stunt its growth and deprive it of its powers—in other words, to carry us away from the very result which the advocates of such rules are anxious to promote.

Some people who do not understand the force of public sentiment, and the weakness of laws which try to act outside of it, naturally fail to accept this view; and give too ready credence to

[Continued on 353d page.]

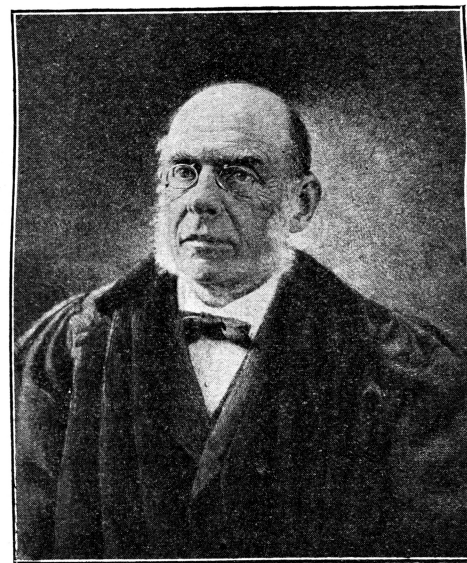
JUST PUBLISHED

A PORTRAIT IN FINE ART OF

Rev. Timothy Dwight, D.D., LL.D.

President of Yale University.

A
SOUVENIR
OF
1899.



A
WORK
OF
ART.

JAMES S. KING, Etcher.

Size of plate, 14 x 18.

EDITION LIMITED.

Two Hundred and Fifty Artist Proofs.

Autographed by Rev. Timothy Dwight, D.D., LL.D.

Copyrighted and Published by

CHARLES BARMORE,

Publisher of

Fine Art Portrait Etchings and Mezzotints of Famous Men.

10 WALL STREET, NEW YORK.

Mr. Barmore will be at the New Haven House at Room 20, from June 23 to June 28. Here the etching can be examined carefully.