

# Corbin's Corner.

OUR COLD STORAGE ROOM is kept at from 5 to 15 degrees Fahrenheit, which is fair security against moths. The garments are also insured against loss by fire. A suit of clothes kept for the season and returned to you at your order, pressed and ready to put on, for three dollars.

## F. A. Corbin,

1000 Chapel Street.

MY DAY IN NEW YORK is Thursday. Place, Astor House. Time, 12 to 4.

### Medical School Finances.

[Editorial in Yale Medical Journal.]

The cordial reception which has greeted the circular of the Bi-centennial Committee and the substantial returns which are already flowing in suggest a word to our readers in behalf of the Bi-centennial movement in general, and more particularly in regard to the need of endowment for the Medical Department. The names of more than seven hundred medical men are in the list of alumni of Yale. If every one of these should contribute at this time, and should designate his subscription as for the Medical Department, material aid would be afforded in the development of this department of the University. During the past decade no department of the University has experienced such rapid and extensive development as the Medical School. When we attempt to discover the causes which have led to this extraordinary development, two factors stand out in special relief—consistent raising of the standard of scholarship and continual increase in the opportunities afforded students to acquire here a thorough training in medicine. With elevation of the standard has come increase in the number of those desiring to avail themselves of the opportunities offered. Now, the point we would particularly impress is the fact that with the increase in the number of students and with the lengthening of the curriculum to four years, both necessitating very considerable increase in the amount of instruction provided, there has been no commensurate increase in the financial resources of the Medical School. That the tide is turning in the right direction is evident from the recent addition to the endowment fund of the Medical Department of the Bliss and Hunt bequests, the former of which was left to be applied by the President for the best interests of the University. If, then, in spite of financial embarrassment, the growth of the Medical School has been so considerable, may we not expect that with greater resources and consequent greater opportunity for affording the highest type of medical education there shall be even greater development in the

future; that with such development, advantage must accrue to the University as a whole, is admitted by all. As aptly put forth by Prof. William H. Welch in the annual address in medicine, delivered at Commencement in 1888: "In no other direction could this University expend with greater promise of usefulness and of renown than in the line of liberal support of the highest and most scientific medical education." This, under the lead of Professor Welch, has been developed at Johns Hopkins, and has there brought great renown to the world over to the University. Nothing except financial embarrassment stands in the way of similar development at Yale, with its consequent reflection of credit to the whole University. The present time seems to us particularly appropriate to the wide circulation of these facts, in the hope that the medical alumni of Yale may be led to add their subscriptions in honor of Yale's Bi-centennial to the endowment fund of the Medical Department. That designation of the purpose to which subscriptions may be made is intended by the committee, is manifest from their publication of a list of the special needs of the University at this time. Reference to this list will show two items particularly applying to the Medical Department: Clinical Building and Pathological Institute, for which \$100,000 is required; and Fund for Instruction, for which \$200,000, a sum urgently required for immediate needs, is asked. May not each medical alumnus of the University be relied upon to assist in the accumulation of these funds?

### The Yale Review for May.

The Yale Review for May discusses editorially the policy of the New York banks of charging for the collection of "country checks," pointing out the parallel in the earlier policy of the Bank of England; it also discusses State legislation and corporation in connection with the Ford franchise tax bill in New York and the Industrial Commission now in session; the editorial notes also cover questions of colonial administration and give the result of a statistical inquiry into the occupation of the graduates of Yale between 1883 and 1892, the occupation of their fathers, and their movements from the place of their birth to that of their permanent settlement. The first body article is by Professor Henry E. Bourne, '83, of Western Reserve University, on the French Experiment at Colonizing the Far East, of which interesting and difficult subject he has made a special study. Professor C. C. Plehn, of the University of California contributes a valuable paper on the Taxation of Mortgages in California; and Dr. H. E. Powers writes on the present Political Drift of Germany. The book reviews are by Professor W. G. Sumner (Simkhovitch, Feldgemeinschaft in Russland); Mr. J. M. Gaines, '96 (Wicksell's Geldzins und Güterpreise); Dr. A. B. White, '93 (Fagnier's Documents); Professor Henry W. Farnam (Adams' Public Finance); Professor A. T. Hadley (Devine's Economics); and others.

### Century Prizes.

Three prizes of \$250 each, for literary work, have been offered by the Century Magazine, competition for which is open to men who receive the degree of A.B. in 1899 or 1900. One prize is given for the best metrical writing of not fewer than fifty lines; one for the best essay of from four to eight thousand words in length; and one for the best story of the same length as the essay. Contributions are due by June 1, of the year succeeding graduation.

### Phi Beta Kappa Elections.

A meeting of the Phi Beta Kappa Society was held on Monday, May 8, to elect officers for next year. The final ballot resulted as follows: President, William Sloane Coffin of New York City; Vice-President, Robert Ferguson of Springfield, Mass.; Secretary, Thomas Walter Swan of Northampton, Mass.; Treasurer, Edward Buffum Hill of Yonkers, New York; Keeper of Archives, Albert William VanBuren; Executive Committee, John B. Hartwell, Chairman; Allen I. Kittle; Harry A. Dow.

# Think It Out!

INSURANCE is as much a part of the serious business of life as any investment or enterprise. It must be studied, and the decision for or against a certain policy must be given on the facts, if it is to be rightly given.

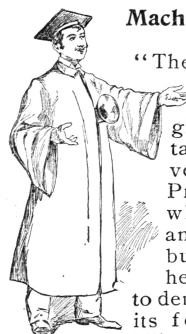
Leave it alone until an agent finds you, and you get into hot water. You suspect that he is giving you at best only half truths, and you don't know how to test him. If you have thought out the subject, you will get all an agent really knows, but he will not get you unless he has just the best thing for you.

The more intelligently you study our policies, the better we like it.

## PHOENIX MUTUAL LIFE INSURANCE CO. HARTFORD, CONN.

J. B. BUNCE, President.  
JOHN M. HOLCOMBE, Vice-Pres't.  
CHAS. H. LAWRENCE, Secretary.

### Machine-Made Oratory.



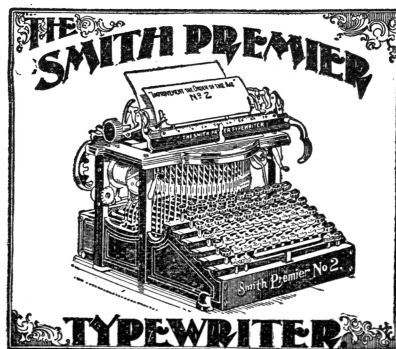
"The recent attempt of the Sophomores of a Western college to give their orations by talking machines was very laughable. The Professors found out what was in the wind and promptly vetoed it, but not before several rehearsals had been held to demonstrate its feasibility.

The Freshies found it out, too, and invaded one of their trials with pitchers of water which they poured into the horns with dire results. The practicability of the scheme is assured, however, and some day we may hear a commencement conducted entirely by machine talkers."

THE EDISON STANDARD PHONOGRAPH, \$20 COMPLETE. ALL DEALERS SELL THEM.  
When you write for latest catalogue No. 24, ask also for our entertaining little book of Phonograph short stories, "What Mr. Openeer Heard."

NATIONAL PHONOGRAPH CO., 26th St. & Broadway, N. Y.

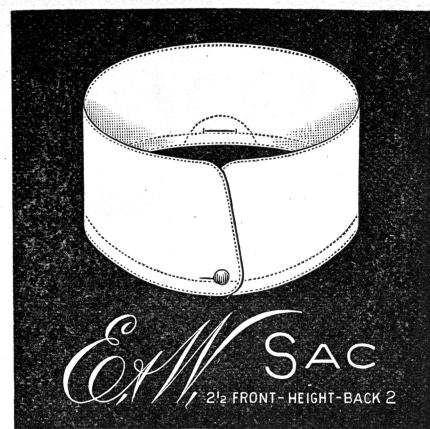
TRADE MARK  
**Thomas A Edison**  
The Edison **GEM** Phonograph Reproduces only; but reproduces with wonderful clearness. . . Price, \$7.50



NEW YORK OFFICE, 337 BROADWAY.

NEW HAVEN OFFICE, 177 CROWN ST.

HARTFORD OFFICE 82 PEARL ST.



## F. B. WALKER & Co. TAILORS

SUCCEEDING F. R. BLISS & CO. CHURCH AND CHAPEL STREETS

FRANK B. WALKER CHAS. P. WALKER

## Mory's

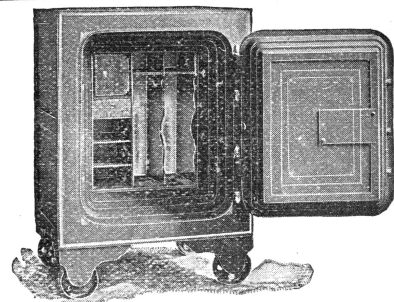
... Louis Linder.

## PACH BROS.,

COLLEGE PHOTOGRAPHERS,

1024 Chapel St., New Haven.

Branch of No. 935 Broadway. - New York



## DIEBOLD SAFE & LOCK CO.,

H. W. BEADLE, GEN'L AGENT, 79 Duane Street, - New York.

## Bicycle Tires.

I can send you by Mail or Express, Prepaid, a good HARTFORD Single-tube Tire for \$2.50, \$3.00 and \$3.50.

CORRESPONDENCE SOLICITED.

## W. P. WEAVER,

Columbia Bicycle Agency,

New Haven, Conn.

Reference—Alumni Weekly.

## CHARLES T. PENNELL,

Successor to Wm. Franklin & Co.,

## IMPORTING TAILOR,

40 Center St., New Haven, Conn.

## Writing Essays

Send subject to us and at a small cost we will scour the periodical literature of the world and send you the best comments of the best minds as soon as they appear.

Terms, \$5.00 for 100 notices.

### ROMEIKE'S

PRESS CUTTING BUREAU,

110 FIFTH AVE., NEW YORK CITY.