

PROFESSOR FISHER'S TRIBUTE.

[Continued from 235th page.]

Institution the fact that for so long a period he received no salary. His time, his strength, his means, have been bestowed as a tribute of gratitude and affection.

OTHER INTERESTS AND TRAITS.

"It must not be inferred that the horizon of Professor Marsh was exclusively that of a specialist, broad as were the relations of his field of inquiry to general science. He delighted in flowers and in the culture of them in his own attractive gardens. He cared for plants that were rare, and blossoms that were specially beautiful. His house was stored with pictures and objects of artistic merit or of curious interest, brought together partly from distant parts of the globe. Nor was his liberality in giving limited to the domain of science and scientific education. Those who know him best are aware that in a quiet way he extended help to persons who were needy. Those most intimate with him, assistants who worked at his side, felt that along with a frankness that amounted often to bluntness—for he always said what he thought—there was a kind heart. Naturally, the gentler side of his nature was most manifest to the neighbors and the close friends whose society he prized.

"I have said that his tastes were not exclusively those of a specialist. It is true likewise, however, that his occupation in life was a veritable calling. He was made for it. We can hardly think of him as divorced from it. It was an absorbing vocation. We cannot conceive of him as laying it down except by the necessity which, sooner or later, brings to an end all human pursuits. It is touching to think that when, in his working-room at the Museum, he was stricken by the first manifestation of the malady which proved to be fatal, he continued as long as he could, in the midst of weakness and pain, to dictate to his amanuensis who was engaged in writing for him on a scientific topic. Perhaps there may have been the thought,—indistinct, it may be, in his mind,—that he must work while it was yet day, 'for the night cometh when no man can work.' Far distant be the time when such a student and benefactor shall be forgotten on these grounds!

"And now that our friend has passed out of our sight, is there not much, as we glance back upon his career, to excite admiration? Are there not traits that may teach us a wholesome lesson? To us, in particular, whose office it is to teach in the University, and to promote its welfare, may not his example of tireless service and of zeal for its prosperity be contemplated with profit? All that we can do to-day is to unite our hearts in an expression of sincere sorrow, and of honor and gratitude to him for the work that he has done. But we shall not forget that among the good gifts for which we owe thanks to God, one of the best is the gift to us of a useful life."

Track Team Outlook.

The work of the track team candidates has been for the most part confined to the gymnasium thus far. Two or three attempts have been made to practice at the Field, but the cold weather and frequent storms have made regular work there very uncertain.

Under the new trainer A. F. Copland and the somewhat different plans for this season's work, an unusual amount of interest has been displayed and Yale's chances for a creditable showing on the track this year are considered good.

The team will feel the loss of such men as ex-captain E. C. Perkins and F. T. van Buren on the hurdles; C. D. Cheney and H. T. Weston in the broad jump, and D. C. Byers and F. V. Chappell in the sprints, but from the abundance of material it is hoped men may be developed for these places.

The men upon whom Yale will rely for the sprints this year will be: F. A. Blount, 1900; C. C. Conway, '99 S.; R. M. Graff, '99 S.; F. H. Warren, '99 S.; C. J. Gleason, 1900; all of whom did well last year, also Captain Fisher, who won second in the 220 yds dash at the

intercollegiate games in Ninety-Seven, and D. Boardman, 1902.

Captain Fisher, D. Boardman and C. F. Luce, 1900 are the most promising candidates for the quarter mile.

In the half-mile, besides C. E. Ordway, 1900, and W. D. Brennan, 1900 S., who won points last year, J. P. Adams, 1900 who did the mile walk, is looked upon as a promising man.

Yale's success in the mile run will rest with C. B. Spitzer, '99; H. Speer, 1900; H. P. Smith, 1900; and S. B. Chittenden, 1902, who made a very good showing in the National relay races last Fall. From this number will probably be chosen also the men who will enter the two-mile run,—the new event on the program for this year's Mott Haven games.

The hurdle races are likely to be among the weakest places in this year's team. J. J. Peter, 1900 S.; C. W. Cady, 1901, and W. F. B. Berger, '99 are the only men in sight for these events. Peter has done very good work in the indoor meets, but he seems best adapted to short distances.

Candidates for the field events are not so numerous as for the track, but among them are some very promising men: R. G. Clapp, '99 S., who made a world's record in the pole vault last year and B. Johnson, 1900, who has done 11 feet 3 inches, should make Yale's chances very good in this event. In the high jump E. C. Waller, '99 S. is the leading candidate and W. F. B. Berger and J. J. Peter will probably be the men chosen for the broad jump.

C. W. Abbott, '99; A. L. Gile, L.S.; S. B. Sutphin, '99 S. and E. E. Marshall, '99 S., are the men upon whom Captain Fisher is counting for the shot and hammer.

INNOVATIONS IN TRAINING.

Several innovations will be made in the work of the team this Spring. Soon after the Easter vacation, a series of weekly contests will be begun, which will last for three weeks and three events will be contested each week with prizes for winners of first places. Chiefly in this way the team will be selected. In place of the regular Spring games this year a class-meet will be held. Lieutenants have been chosen from each of the four classes to look after the interests of their own class, for this meet. Winners of first places and the winners of the class relay-race, which will be one of the events, will be allowed to wear their class numerals. Also the class winning the most points will have its numerals engraved upon the cup, now in the trophy room, which was presented some time ago by Mr. T. De Witt Cuyler, Yale '74, and the members of the team winning the relay race will have their names engraved upon another cup presented by Mr. Charles Bill, Yale '64 S.

Four cups have been given by the News as prizes for the relay race and Mrs. R. C. Fisher has given three others for prizes in the class games.

Captain Fisher has decided to send three relay teams to the National Championship games to be held in Philadelphia, April 29th, the men for which will be chosen at the class games.

No candidates are asked to stay in New Haven during the vacation, although several are intending to do so from their own choice.

Law School Nine.

The Law School Baseball Nine, which has recently been organized, will take a Southern trip during the Easter recess, starting Monday, April 3d, and returning at the end of the week. The details of the trip have not all been arranged so it is impossible to state the games which will be played. The Nine will be composed of the following men: A. R. Cuncha, c.; A. Fessenden, p.; A. L. Corbin, 1b.; W. L. Lane (Capt.) 2b.; J. H. Buchanan, ss.; C. P. Hine, 3b.; J. W. Doheny, lf.; W. J. Malone, cf.; R. F. Hill, rf.; C. C. Mix and S. E. Hoyt, substitutes.

"I find them the best preparation for colds, coughs and asthma."—Mrs. S. A. WATSON, Temperance Lecturer.

BROWN'S Bronchial Troches

OF BOSTON

Sold in boxes only—Avoid imitations.

Cross Country Running.

An invitation has been received by the track management to send a representative to a conference for the purpose of forming an Intercollegiate Cross-Country League. The meeting has been called by the Cornell Cross-Country Club, through their Captain, A. J. Sweet. Captain Fisher has accepted the invitation and has chosen C. B. Spitzer, '99, to represent Yale.

The idea is to foster cross-country running by an annual meet for the individual and team championships, in preparation for which cross-country running will be actively taken up in the colleges. Cornell, Pennsylvania, Princeton, Brown, Columbia, Yale, and perhaps Harvard will be represented at the meeting, which will be held at Havemeyer Hall, Columbia University, Monday, April 3.

Easy Insurance

The term is preferable to cheap insurance, for cheap is a mis-used and abused word, carrying the burden of mean constructions, which imply inferiority and shoddy qualities.

The new forty per cent. note exchangeable policy of the

PHOENIX MUTUAL

gives you first-class insurance, which you can continue all your life, but which will cost you very little for the first five years. It's a mighty clever policy and as sound as a nut.

PHOENIX MUTUAL LIFE INSURANCE CO. HARTFORD, CONN.

J. B. BUNCE, President.
JOHN M. HOLCOMBE, Vice-Pres't.
CHAS. H. LAWRENCE, Secretary.



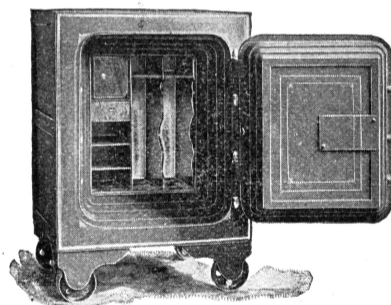
F. B. WALKER & Co.
TAILORS
SUCCEEDING F. R. BLISS & Co.
CHURCH AND CHAPEL STREETS

FRANK B. WALKER
CHAS. P. WALKER

Mory's - -
... Louis Linder.

PACH BROS.,
COLLEGE PHOTOGRAPHERS,
1024 Chapel St., New Haven.

Branch of No. 935 Broadway, - New York



DIEBOLD SAFE & LOCK CO.,
H. W. BEADLE, GEN'L AGENT,
79 Duane Street, - New York.



For All Around Work

It is the **Superior Writing Machine.**

It Excels in all Desirable Features. It is Simple, Strong and Mechanically Correct—the Most Economical Machine Made. ::::::::::

SEND FOR ART CATALOGUE.

The Smith Premier Typewriter Co.

NEW YORK OFFICE, 337 BROADWAY.
NEW HAVEN OFFICE, 177 CROWN ST.
HARTFORD OFFICE 82 PEARL ST.

Forehand Perfection Automatic.

The Finest Small Revolver made.

POSITIVE STOP ON CYLINDER!

Automatic hammer block, making accidental discharge IMPOSSIBLE.

32 Calibre, 5 Shot, 3" Barrel, Weight, 12 ozs. BICYCLE SIZE.
2" Barrel, Weight, 10 ozs.

SEND FOR CATALOGUE M.



FOREHAND ARMS CO., Worcester, Mass.