

## YALE ALUMNI WEEKLY

SUBSCRIPTION, - \$3.00 PER YEAR.

Foreign Postage, 40 cents per year.

PAYABLE IN ADVANCE.

Single copies, ten cents each. For rates for papers in quantity, address the office. All orders for papers should be paid for in advance.

Checks, drafts and orders should be made payable to the Yale Alumni Weekly.

All correspondence should be addressed,—  
Yale Alumni Weekly, New Haven, Conn.

The office is at Room 6, White Hall.

## ADVISORY BOARD.

H. C. ROBINSON, '53. J. R. SHEFFIELD, '87.  
W. W. SKIDDY, '65 S. J. A. HARTWELL, '89 S.  
C. P. LINDSLEY, '75 S. L. S. WELCH, '89.  
W. CAMP, '80. E. VAN INGEN, '91 S.  
W. G. DAGGETT, '80. P. JAY, '92.

## EDITOR.

LEWIS S. WELCH, '89.

## ASSOCIATE EDITOR.

WALTER CAMP, '80.

## ASSISTANT EDITOR.

E. J. THOMPSON, Sp.

## NEWS EDITOR.

FRED. M. DAVIES, '99.

## ASSISTANT.

PRESTON KUMLER, 1900.

Advertising Manager, O. M. CLARK, '98.

Assistant, BURNETT GOODWIN, '99 S.

Entered as second class matter at New Haven P. O.

NEW HAVEN, CONN., MARCH 22, 1899.

## OTHNIEL CHARLES MARSH.

Others who can do it will tell of the service to science of the late Othniel Charles Marsh. His work was so conspicuous and many of his achievements so brilliant, that the lay mind easily recognized a man of large dimensions, but it will take time and scientific study, both of the mass of literature that bore his name and the mass of specimens he gathered, of which untold quantities are yet to be taken from their boxes, to place his name among the scientists.

But let that judgment come as it may and when it is ripe. Other conclusions are easy now. The biographer of Professor Marsh must, with any use of his facts, proclaim him a man of great loyalty to his work and of unmeasured generosity in the use of his own means to forward it. His explorations and researches were on a grand scale. There was something fine in the extent of his costly conquests, adding to the sum of knowledge.

Then there is his service to Yale. That needs no demonstration. The dry records of formal Corporation action eloquently proclaim it. Only a few months ago, he turned over to the University the results of a life's great toil and lavish expense of a fortune. These treasures are priceless. It was a great thing to him to be able to serve the cause of Science. But it must have made his labors the easier and their rewards sweeter, when he felt that he was adding not only to the sum of knowledge, but to the strength and the fame of the University of Yale.

This place, Yale, he loved. For not a little while it has been the good fortune of the editors of this paper to confer frequently with him on various matters of University interest. He always knew well what was going on, not only in the council chamber, but on the Campus, and he watched particularly the student life with a constant interest. He was so anxiously devoted to the welfare of Yale that he was often not a little impatient with men and things that seemed to be in the way. But it is easy to see it all now as a measure of his loyalty. He had great affection for Yale and he served her wonderfully well.

## THE PRESIDENTIAL DISCUSSION.

The most satisfactory feature of the Presidential situation, so far as the WEEKLY is able to have any relations to it, is the frank acceptance by those in authority, in the spirit in which it is offered, of such service as the WEEKLY can offer. In inviting a discussion of the general question, the WEEKLY distinctly said that it had no desire to interfere, but merely to let those who were tremendously interested say what was in their mind. Those whom it addressed were thoughtful men, whose loyalty was unquestioned, whose aims were high, who were so interested that, as we believed, they would not willingly hold their peace if they had an opportunity to speak.

The invitation was accepted by these alumni in the same spirit in which it was offered. They wanted to say what they felt. If anything that they say is of any help, they are glad. If the sentiment of a considerable body of the alumni which they express is a factor to be considered in the situation, as most men would admit, then they like to help to declare it.

And just in this same spirit have many of those who have the responsibility of choice, taken what the alumni have been able to give through this paper, both what might be printed and what might not be printed. They have expressed no feeling of resentment; but, on the contrary, have said that they were glad of what could be offered in this way. It is in line with their already acknowledged desire to learn everything that they can about good men for candidates and as to how good men feel about the position.

## CITY, STATE AND NATION.

At last week's Corporation meeting, Yale officially recognized the relations between herself and the City of New Haven, the State of Connecticut, and the United States of America. It is not reading too much significance into the action of the Corporation concerning the erection of the Nathan Hale statue to say that, in this respect, it is one of the most important steps that Yale has taken.

We refer entirely to the members of the Committee selected from outside the list of Yale graduates or Yale officers. By the choice of the Hon. Joseph R. Hawley, Senator from this state in the Congress of the United States, formerly Governor, and a prominent factor in national and state affairs for thirty years; of the Hon. S. E. Merwin, one of the most public-spirited of the citizens of New Haven and formerly Lieutenant-Governor of the Commonwealth; of Mr. Jonathan Trumbull of Norwich, conspicuous for many years in the work of preserving the memorials of the heroic age of the nation and of connecting the good things of the past with the present; of Mr. George D. Seymour of New Haven, who holds his degree from another institution, but who is always ready to pull a laboring oar in every work that furthers the resources and interest of the University and city in things of art and general culture—by these choices Yale said plainly: We wish to do honor to the patriot-scholar, Nathan Hale, one of the sons of Yale. Like every good son of Yale, he did his best work for his alma mater by his work for the public good; and New Haven, where he spent his college days, and Connecticut, his native state, and the Republic for which he died, must be as much interested as we are, and we ask you to help us in honoring him. It was the right spirit and it was well expressed.

## "NATIONAL REPUTATION."

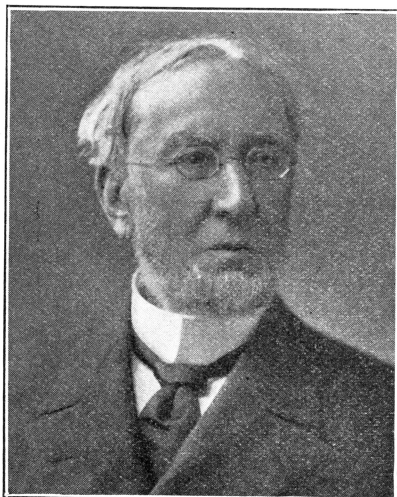
"National reputation" is a phrase which some people have been very willing to misconstrue. It has been named by a great many of the alumni as one of the requisites for the next President of Yale. The meaning of the phrase was explained in the article of last week, but many critics for some reason did not take the reasonable construction put upon it. It, of course, did not mean that the man must be in the public eye; that his name must be on the lips of all newspaper readers, and must figure prominently in steeple heads. What the alumni meant, when they asked for a man of national reputation, and what was clearly stated in the article expressing their views, was this: That the man should be recognized in all parts of the land among his fellow workers, in whatever line he had been especially active, as a man of ability and force. There are several men right here at Yale who fulfill that requirement well. They include one or more who have been conspicuously mentioned for the Presidency, and one or two others who have been less conspicuously mentioned for the Presidency, and with whose names the general public is not familiar. Their reputation is nevertheless national.

It is a reasonable contention that the man who should be called to such a chair as this, should have already demonstrated to those with whom he has come in contact, his abilities and his character, and it is a reasonable contention that he should be a man who has come in contact with men in various parts of the country following the same walk of life. There may be some great leader of education and a great example to youth, who has lived almost entirely in his own locality, and who simply needs an introduction to the world that the world may acclaim him. Nobody expects the Corporation to linger very long if they find such a man. But in modern conditions of life, the possibility of that sort of discovery is less than it used to be, and it does not seem to be requiring too much, as a general rule, that a man should have demonstrated to a wide constituency his strength of character and of mind, before he may be considered fitted for the great work of leading Yale.

## Prof. Hoppin's Resignation.

The following resolutions were passed by the Corporation on March 16, 1899:

"The President and Fellows, in accepting the resignation of Professor Hoppin, desire to express their high



PROFESSOR JAMES M. HOPPIN, '40.

appreciation of the long-continued and valuable services which he has very generously rendered the University in two of its Departments—the School of Theology, and the School of Art—in the former during a period of eighteen

years, from 1861 to 1879, and in the latter for twenty years, from 1879 until the present time. They desire also to give expression to their very great regard for him as a cultured scholar and as an honored member of the Faculty—one who, by his character, his influence, his instructions and his writings, has done much for the University and for the cause of higher education.

"On his retirement from his official duties they offer him their best wishes for a happy life in the future years. They hope that in those years he may find rich enjoyment in the studies to which he has for so long a time, and with so much ability and enthusiasm, devoted himself, and they pray that abundant blessings of every sort may come to him as the reward of his honorable and faithful work.

"As a mark of their respect, and with the desire that his connection with the University may not be severed, they ask him to accept the position of Professor Emeritus when his resignation, in accordance with his own request, shall take effect at the close of the present academic year."

## Harvard-Yale Debate.

The date of the ninth Yale-Harvard debate will be May 12. Harvard has the choice of subjects. She will also submit a list of twenty names for judges from which Yale will select six, and from these the debate judges will be chosen.

The annual meeting of the University Club of New York was held on March 18. Among the elections to the Council was that of Hugh D. Auchincloss, Yale '79. George Woolsey, Yale '81, and George S. Brewster, Yale '91, were elected to the Committee on Admissions.

## Yale Law School.

For circulars and other information apply to

Prof. FRANCIS WAYLAND,  
Dean.Guaranty Trust Co.  
of New York.

NASSAU, CORNER CEDAR STREET.

CAPITAL, - - - - \$2,000,000  
SURPLUS, - - - - \$3,000,000

ACTS AS TRUSTEE FOR CORPORATIONS, FIRMS AND INDIVIDUALS, AS GUARDIAN, EXECUTOR, AND ADMINISTRATOR, TAKES ENTIRE CHARGE OF REAL AND PERSONAL ESTATES.

INTEREST ALLOWED ON DEPOSITS  
subject to cheque or on certificate.

DRAFTS ON ALL PARTS OF GREAT BRITAIN, FRANCE AND GERMANY BOUGHT AND SOLD. COLLECTIONS MADE.

TRAVELLERS' LETTERS OF CREDIT AVAILABLE IN ALL PARTS OF THE WORLD, AND COMMERCIAL LETTERS OF CREDIT ISSUED.

WALTER G. OAKMAN, President.  
ADRIAN ISELIN, JR., Vice-President.  
GEORGE R. TURNBULL, 2d Vice-President.  
HENRY A. MURRAY, Treas. and Sec.  
J. NELSON BORLAND, Asst. Treas. and Sec.  
JOHN GAULT, Manager Foreign Dept.

## DIRECTORS.

Samuel D. Babcock, Charles R. Henderson,  
George F. Baker, Adrian Iselin, Jr.,  
George S. Bowdoin, Augustus D. Juilliard,  
August Belmont, James N. Jarvie,  
Frederic Cromwell, Richard A. McCurdy,  
Walter R. Gillette, Alexander E. Orr,  
Robert Golet, Walter G. Oakman,  
G. G. Haven, Henry H. Rogers,  
Oliver Harriman, H. McK. Twombly,  
R. Somers Hayes, Frederick W. Vanderbilt,  
Harry Payne Whitney.

## LONDON BRANCH,

33 LOMBARD STREET, E. C.

Buys and sells exchange on the principal cities of the world, collects dividends and coupons without charge, issues travellers' and commercial letters of credit, receives and pays interest on deposits subject to cheque at sight or on notice, lends money on collaterals, deals in American and other investment securities, and offers its services as correspondent and financial agent to corporations, bankers and merchants.

## Bankers.

BANK OF ENGLAND,  
CLYDESDALE BANK, Limited,  
NATIONAL PROVINCIAL BANK OF  
ENGLAND Limited,  
PARR'S BANK, Limited.

## Solicitors.

FRESHFIELDS AND WILLIAMS.

## London Committee.

ARTHUR JOHN FRASER, CHAIRMAN.  
DONALD C. HALDEMAN.