

**THE JUNIOR PROM.**

**JUNIOR PROM COMMITTEE.**

**Fewer Visitors—Some Interesting Figures and their Meaning.**

The financial side of Nineteen Hundred's Junior Promenade presents an aspect strangely different from that of other promenades held within the past several years. Last week the Committee were forced to realize that instead of the large surplus which each recent Promenade Committee has held at its disposal, the final settlement of accounts will show an actual deficit of no mean proportions.

The amount realized on the open sale of boxes was some \$700 less than last year. This would seem to indicate that the lack of support comes from the Senior, Sophomore and Sheff. Junior classes, inasmuch as the receipts from the closed sale of boxes for Juniors and Sheff. Seniors came within \$70 of the amount netted last year.

The subscriptions this year were also unusually small, amounting to about \$1,800, as compared with \$2,723 in 1898.

The box-holders met on Friday noon and consented to the proposition of the Committee to assess each box-holder \$3 additional. This special assessment should cover a large part of the deficit and it is expected that the remainder will be met without difficulty, although the Committee have not yet decided on the means.

The success of a Junior Promenade from a financial standpoint is almost directly dependent on the interest manifested in it by the Class and the College in general. Hence the present lack of financial support has more significance than might at first be supposed. It is a fact that the number of men actively interested in the Promenade this year, that is to say those who had guests at Promenade and Class Germans, was considerably smaller than it has been for some years past. Exact figures are not available at this time, but approximately the number of box-holders this year, as compared with last, shows a decrease from 172 to 155. In 1898, 40 couples danced the Senior German while the number this year fell to 34. The attendance at the Junior German last year was 115; this year, 95. A still greater proportional decrease was noted in the case of the Sophomore German, only 40 couples dancing, as compared with 60 in 1898. This year however, some of the Sheff. society Germans were held on Monday evening and to this fact may be attributed in part the falling off in attendance at the Junior and Sophomore Germans.

**LESS MONEY PER MAN.**

This pronounced decrease in the number of men who had guests at the Promenade festivities can not be without good cause. Dean Henry P. Wright recently said that the proportion of men of moderate means in the College is greater than it has been at any time within the past few years. Dean Wright's remark is thought to be of considerable significance in this connection, as the Junior Promenade would be, by its nature, the thing most likely to be affected by a decrease in the average wealth of the student body.

The curtailing of the Promenade festivities by the Faculty is the reason generally assigned by the undergraduates. This involved the omission of the dances and cotillions formerly given on Saturday night by the Junior Frater-

nities and the Sheffield societies. These functions added considerably to the pleasures of the Prom season without adding materially to the cost.

**A COMPARISON OF FIGURES.**

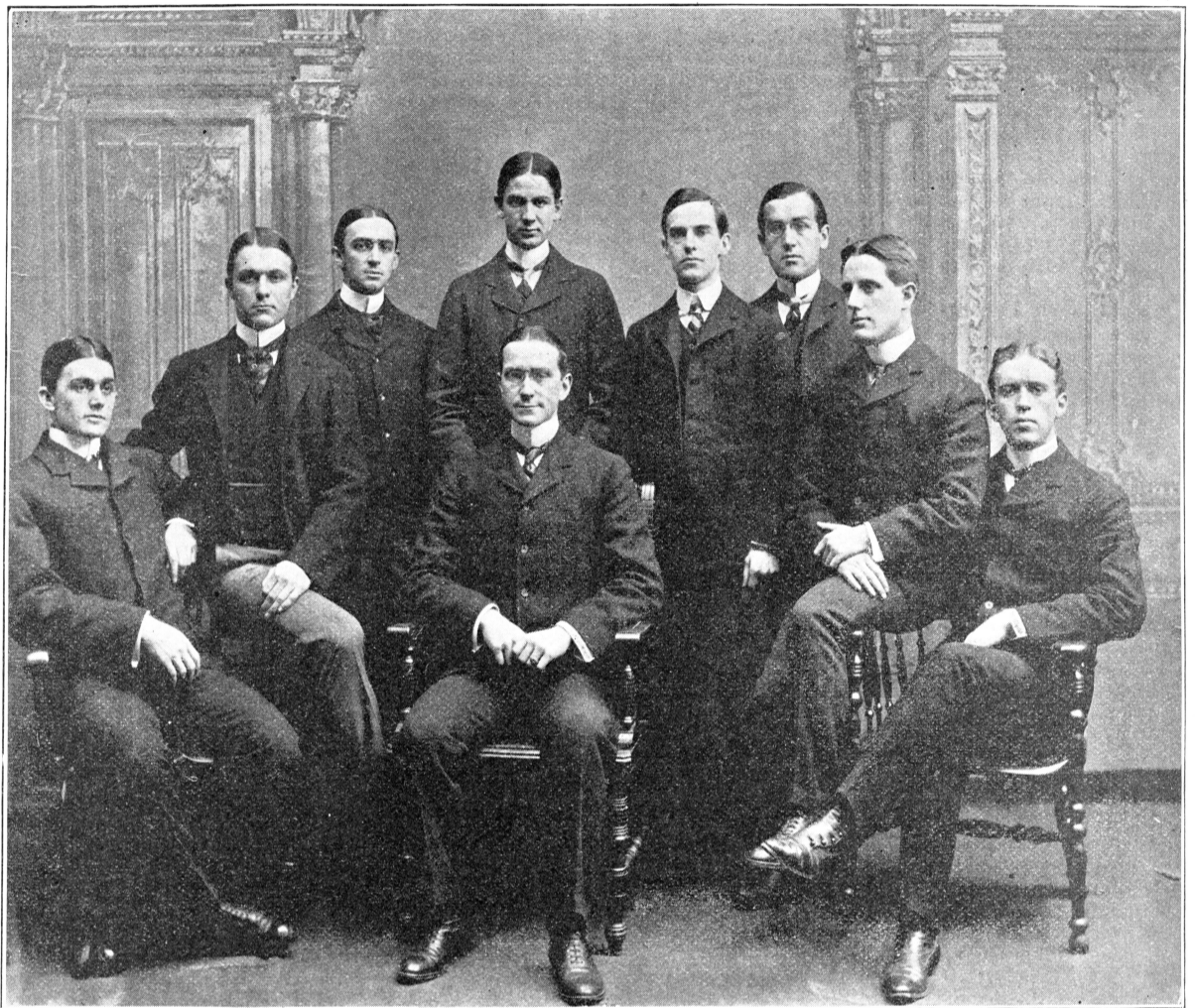
A comparison of the receipts from subscriptions and the sales of boxes and chairs (the principal sources of income), last year with close approximations for the same this year will show the direct source of the deficit.

	1899	1900
Closed sale of boxes.....	\$1,810	\$1,740
Open sale of boxes.....	1,729	1,070
Subscriptions .....	2,672	1,800
Sale of chairs, dance orders, etc. ....	783	400

**THE PROM ITSELF.**

The Prom was officially opened on Monday night with the Concert by the Glee Club in the Hyperion. F. W. Sheehan, 1901 L.S., the leader of the Club, was absent owing to an attack of appendicitis and H. M. Dewey, '97, took his place in the quartette. The Freshmen did nothing more objectionable than to spill finely cut tissue paper and shoot small cards into the audience, from the upper balcony and confined these efforts to the time between the numbers. During the concert a large cardboard man, bearing the numerals "1902" was lowered in front of the stage, where by means of cords he was made to do some fantastic and amusing dances.

The program follows:



Photograph by Pach.

J. C. Greenway. S. B. Camp. F. B. Adams. W. L. Chittenden. A. J. Baker. M. Douglas. P. A. Rockefeller. M. Mills. B. Johnson.

**PART I.**

1. A Night Off, Banjo Club. Rosey
2. Brave Mother Yale, Merrill, '98, Shepard Genée
3. Italianischer Salat, Mr. Schneeloch and Club.
4. Stein Song, Bullard
5. Tutti Frutti, Glee and Banjo Clubs.

**PART II.**

1. Hungarian Dance, Mandolin Club. Brahms
2. The Goslings, Beidge
3. Love Song, Mr. Simmons and Club. Nevin
4. Cotton Blossoms, Banjo Club. Hall
5. Negro Melodies, Mr. Douglas. Mr. Dewey. Mr. Noble. Mr. Lyon.

**PART III.**

1. Medley, Mandolin Club. Austin
2. Bells of Yale, Mason, '99; Ives, '98 Mr. Schneeloch and Clubs.
3. Son of a Gambolier, Carmen-Yalense
4. Bright College Years, Durant, '81

**THE JUNIOR GERMAN.**

The Junior German took place in Alumni Hall immediately after the Prom Concert on Monday, January 23d. There were four favor figures and one souvenir figure. The German was led by F. B. Adams and S. B. Camp. About one hundred couples danced and

the patronesses were: Mrs. Albert M. Young of Toledo; Mrs. Samuel Coffin of New York; Mrs. Charles T. Barney of New York; Mrs. W. W. Farnam of New Haven; Mrs. D. C. Barton of Winsted, Conn.; Mrs. W. H. Moseley of New Haven; Mrs. G. C. Greenway of Hot Springs, Ark.

The following took part: W. S. Coffin with Miss Coffin of New York; A. VanderVeer with Miss Stott of Albany, N. Y.; S. M. Wood with Miss Miller of Mount Vernon, N. Y.; W. J. Vogeler with Miss Vogeler of Baltimore; H. C. Heinz with Miss McLean of Pittsburg, Pa.; E. Alexander with Miss Wilson of New Haven; J. W. Barney with Miss Potter of New York; L. C. Hedge with Miss Swift of Detroit; F. D. Cheney with Miss Cheney of South Manchester, Conn.; R. Russell with Miss Hubbell of Greenwich, Conn.; H. P. Wood with Miss Wood of Gloversville, N. Y.; H. Moore with Miss Cassard of Baltimore; F. B. Adams with Miss Young of Richmond, Va.; A. J. Baker with Miss Brown of Yonkers, N. Y.; M. Douglas with Miss Douglas of Albany, N. Y.; W. E. Minor with Miss H. Seeley of Cincinnati; M. A. Stone with Miss Locke of New York; W. B. Williams with Miss Griscom of Philadelphia; W. H. Averell, Jr., with Miss Averell of Rochester, N. Y.; R. M. Patterson with Miss M. Brinley of Philadelphia; B. Johnston with Miss Bushnell of Plainfield, N. J.; A. H. Graves with Miss Noel of St. Louis; W. Buck with Miss Ney of Hartford, Conn.; W. L. Chittenden with Miss Johnson of Washington; M. Mills with