

# YALE ALUMN WEEKLY

VOL. VIII. No. 13.

NEW HAVEN, CONN., THURSDAY, DECEMBER 15, 1898.

PRICE TEN CENTS.

## GLEE CLUB TRIP.

### Personnel of the Club and the Complete Itinerary.

The annual Christmas trip of the University Glee and Banjo Clubs will begin on Wednesday, December 21, the day the College examinations are over. The clubs this year will not go further West than St. Louis, but will go as far South as New Orleans, the men traveling in two private cars. At the different points where concerts will be given entertainments have been arranged by old Yale graduates and friends of the men on the clubs.

The officers of the Glee and Banjo Clubs are: T. S. Maffitt, '99, Manager; F. D. Cheney, 1900, Assistant Manager; F. W. Sheehan, 1901 L.S., Leader of the Glee Club; C. C. Conway, '99 S., Leader of the Banjo Club.

The Clubs are composed of the following men:

#### GLEE CLUB.

First tenors—J. D. Carson, '99; E. Learned, '99; A. J. Baker, 1900; M. Douglas, 1900; H. C. Price, 1900; H. R. Schneeloch, M.S.

Second tenors—E. T. Noble, '99; J. S. Porter, '99; L. S. Treadwell, 1900 S.; A. E. Richards, P.G.; J. C. Greenway, 1900; G. A. Dewey, 1902.

First bass—F. W. Sheehan, L.S.; H. M. Dewey, '99; G. W. Simmons, 1900; R. Russell, 1900; W. B. Clarke, 1900; J. C. Palmer, '99.

Second bass—F. A. King, '99; C. S. Brooks, 1900; G. A. Lyon, Jr., 1900; W. W. Herrick, 1902; M. K. Parker, 1901; E. A. Park, 1900.

#### BANJO CLUB.

Banjourines—G. S. Chappell, '99; C. F. Sweet, '99; L. H. Thompson, '99 S.; F. L. Belin, 1901 S.; C. C. Conway, '99 S.

Piccolo—E. H. Clark, 1900 S.  
Banjos—J. C. Greenleaf, '99 S.; G. B. Kip, 1901.

Mandolins—R. P. Loomis, '99; M. D. Eames, '99; D. S. Blossom, 1901.

Guitars—C. M. Fair, '99; H. M. Morgan, '99; E. Q. Trowbridge, '99; R. G. VanName, '99; F. B. Humphreys, '99 S.

#### MANDOLIN CLUB.

1st Mandolins—R. P. Loomis, '99; L. H. Thompson, '99 S.; E. H. Clark, 1900 S.; F. L. Belin, 1901 S.; C. C. Conway, '99 S.

2d Mandolins—C. F. Sweet, '99; M. D. Eames, '99; H. M. Morgan, '99.

Guitars—C. M. Fair, '99; E. Q. Trowbridge, '99; G. S. Chappell, '99; R. G. VanName, '99; F. B. Humphreys, '99 S.  
Flute—E. H. Lewis, '99.

'Cellos—J. C. Greenleaf, '99 S.; E. Learned, '99.

#### THE ITINERARY.

Below is given the itinerary of the trip:

Wednesday, December 21st—Concert at Union County Country Club Casino, Plainfield, N. J.

Thursday, December 22d—Leave New York via New York Central at 10.30 A. M. Arrive Albany at 2.25 P. M. Concert at Harman's Blucker Hall.

Friday, December 23d—Leave Albany, via New York Central at 12.50 A. M. Arrive Cleveland 12.45 P. M. Concert at Association Hall.

Saturday, December 24th—Leave Cleveland, via L. S. and M. S. at 10.35 A. M. Arrive Toledo at 1.35 P. M. Concert at Valentine Theatre.

Sunday, December 25th—Leave Toledo, via L. S. and M. S. at 7.45 A. M. Arrive Chicago at 3 P. M. December 26th, concert in Studebaker Hall.

Tuesday, December 27th—Springfield, Ill. Concert in the afternoon at the Chatterton Opera House.

Wednesday, December 28th—St. Louis, concert at 14th Street Theatre.

Thursday, December 29th—Leave St. Louis, via St. L., I. M. and S. at 3.05 A. M. Arrive Memphis at 3 P. M. Concert in Auditorium Theatre.

Friday, December 30th—New Orleans. Concert at French Opera House.

Monday, January 2d—Nashville, Concert at Masonic Temple Theatre.

Tuesday, January 3d—Leave Nashville, via L. and N., at 6 A. M. Arrive Cincinnati at 3.30 P. M. Concert at "The Odeon."

Wednesday, January 4th—Leave Cincinnati, via B. and O., at 3.25 A. M. Arrive Pittsburgh at 4 P. M. Concert at Carnegie Hall.

January 5th.—(Pittsburg.)

Friday, January 6th—Leave Pittsburgh, via B. and O., at 8.05 A. M. Arrive at Baltimore at 6.04 P. M. Concert at Lehman's Hall.

Saturday, January 7th—Leave Baltimore at 12.05 P. M. Arrive at Brooklyn 3 P. M. Concert at Academy of Music.

Letters for the men should be addressed in care of Yale Glee and Banjo Clubs to the addresses given above.

#### THE PROGRAM.

The following program will be given at all concerts:

##### PART I.

1. A Night Off.....Rosey. Banjo Club.
2. Brave Mother Yale Merrill, '98; Shepard.
3. Italianischer Salay .....Genee. Mr. Schneeloch and Club.
4. Tutti Frutti.

##### PART II.

1. Hungarian Dance .....Brahms. Mandolin Club.
2. The Goslins.....Bridge.
3. Love Song.....Nevin. Mr. Simmons and Club.
4. Cotton Blossoms.....Hall. Banjo Club.
5. Negro Melodies: Mr. Douglas, Mr. Sheehan, Mr. Noble, Mr. Lyon.

##### PART III.

1. Medley.....Arr. by Austin. Mandolin Club.
2. Bells of Yale..Mason, '99; Ives, '98. Mr. Schneeloch and Club.
3. Son of a Gambolier Carmen Yalensis.
4. Psychology.....Carmen Yalensis. Mr. Sheehan and Club.
5. Bright College Years..Durant, '81.

### The Close of the Term.

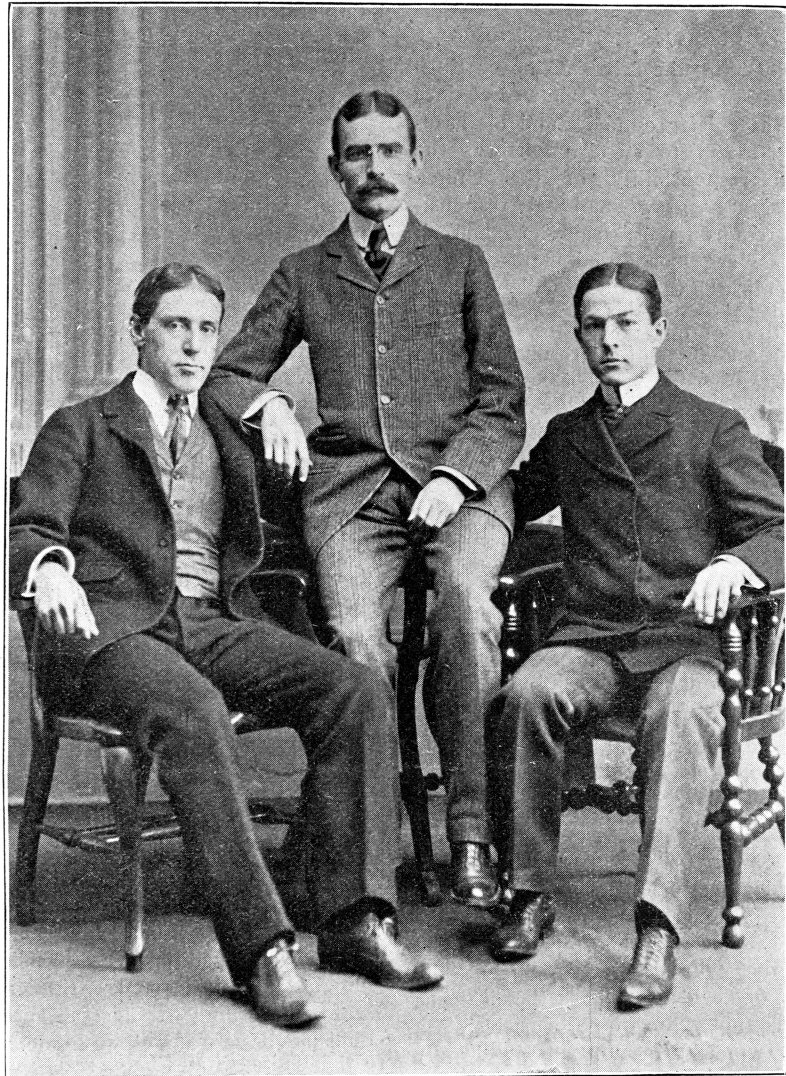
Recitations stopped on Saturday, December 10, and the semi-annual examinations were begun on the Monday following. The Christmas vacation will commence on Wednesday, December 21, and will extend to Tuesday, January 10th.

### Renaissance Club Banquet.

The Renaissance Club held a banquet at the University Club on Friday evening, December 9th. E. F. Hinkle, '99, acted as toastmaster and the following men responded to toasts: J. W. Wear, '99; W. DeL. Kountze, '99; A. B. Babcock, '99 S., and L. E. Stoddard, '99.

Thomas Truxton Hare has been elected Captain of the University of Pennsylvania Eleven for next year.

### YALE'S VICTORIOUS DEBATERS.



Cornelius Porter Kitchell, L. S.  
Philip Cory Walcott, 1900. Ashley Day Leavitt, 1900.

### MR. HENDRIE'S LATEST GIFT.

He Has Sent \$10,000 More to the Law School Fund.

Mr. John W. Hendrie, Yale '51, of Sound Beach, Conn., whose gift of one hundred dollars to the Yale Mission was recorded last week, and whose frequent gifts of thousands towards the building fund of the Yale Law School have been recorded from time to time in the last two or three years, has added still further to the Law School's monies.

Within the last two or three days, Mr. Hendrie has sent to Mr. W. W. Farnam, the Treasurer of the University, a check for ten thousand dollars (\$10,000) to be added to the fund for completing the Yale Law School Building. This brings matters to a point where the friends of the School are already thinking of the completed building. But ten or fifteen thousand dollars more is said to be needed.

Mr. Hendrie's contributions have come in very quietly from time to time, and the total reached by them has not been known to most people. An important subscription was overlooked last week, when the total was figured. Dean Wayland informs the WEEKLY that the contributions of Mr. Hendrie to the Law School, including this last gift, have now reached \$60,000.

### YALE WINS IN DEBATE.

Princeton Beaten in a Well Fought Contest.

Although it was Princeton's turn to win at debate this year, Yale was able to break the precedent and establish a record of two successive victories over her adversary, besides making the score on debates three to two in her favor. The contest which was held in College Street Hall on Tuesday evening, Dec. 6, was well fought out and the audience was much divided in opinion when the judges retired for their decision. They had listened to remarkably well-prepared speakers on both sides, who had said what they were there to say, well, though seldom or never approaching oratory. Princeton undoubtedly was the more polished, all things considered. Yale was earnest, logical and convincing, and in the rebuttals drove home the points she had made in the opening debate, taking advantage of the weak spots in her opponent's armor.

Both sides met squarely on the interpretation of the question and the attention of a listener was given no opportunity to lag, because of the frequent departure made by a speaker from the set program, to attack the arguments of his predecessor. The audi-