

YALE ALUMNI WEEKLY

SUBSCRIPTION, - \$3.00 PER YEAR.

Foreign Postage, 40 cents per year.

PAYABLE IN ADVANCE.

Single copies, ten cents each. For rates for papers in quantity, address the office. All orders for papers should be paid for in advance.

Checks, drafts and orders should be made payable to the Yale Alumni Weekly.

All correspondence should be addressed,—
Yale Alumni Weekly, New Haven, Conn.

The office is at Room 6, White Hall.

ADVISORY BOARD.

H. C. ROBINSON, '53. J. R. SHEFFIELD, '87.
W. W. SKIDDY, '65 S. J. A. HARTWELL, '89 S.
C. P. LINDSLEY, '75 S. L. S. WELCH, '89.
W. CAMP, '80. E. VAN INGEN, '91 S.
W. G. DAGGETT, '80. P. JAY, '92.

EDITOR.

LEWIS S. WELCH, '89.

ASSOCIATE EDITOR.

WALTER CAMP, '80.

ASSISTANT EDITOR.

E. J. THOMPSON, Sp.

NEWS EDITOR.

FRED. M. DAVIES, '99.

ASSISTANT.

PRESTON KUMLER, 1900.

BUSINESS DEPARTMENT ASSISTANTS.
O. M. CLARK, '98. BURNETT GOODWIN, '99 S.

Entered as second class matter at New Haven P. O.

NEW HAVEN, CONN., DEC. 8, 1898.

All material for the WEEKLY, which is not of the character of late news, should be received not later than Friday morning, for the issue of the following week. Articles of a general nature can always be prepared so as to be received by that time, and alumni notes should all be in the office at that time.

In the case of record of late news, it is possible to handle a limited amount of very important matter as late as Monday afternoon, but its use cannot be guaranteed by that time.

TIME OF ISSUE.

All copies of the WEEKLY will hereafter go into the mails not later than Wednesday night and the paper will be on sale by noon of that day. It has been found possible to effect this change and to make it permanent. It has long been desired, but the system of the paper has not until now been developed enough to allow it.

The advantage of printing early in the week rests on the fact that many of the important things in the college world come at the end of the week, and it is desirable to get the record of them into the hands of the alumni as early as possible. The paper will be dated as hitherto, at least for the present. We trust that the change will be acceptable to the WEEKLY readers.

A special request is made that subscribers inform us if, hereafter, their paper fails to reach them twenty-four hours earlier than under the old schedule of mailing. The gain of a day should be secured, except in the case of those at long distances from New Haven, who are served by steamships or trains running at considerable intervals. We request again, in this connection, that any irregularity in regard to the delivery of the paper, be reported at once to this office. These complaints are investigated promptly. They generally arise from some trouble in the mails, which, at the paper's request, is always investigated and reported on by the New Haven office.

THE MISSION FUNDS.

The responses to the appeal for funds to complete the building of the Yale Mission have begun to come in. They show hearty endorsement of the undertaking. A generous donation from a

very generous friend of Yale is recorded in this paper. A quick following of the good examples already set will be very much appreciated. The thing ought not to drag at all, but begin with no encumbrance and with every preparation complete. A few gifts like that received from Mr. Hendrie would help to solve the matter very quickly. Inasmuch as those gifts are rare, it is all the more incumbent upon those who are well disposed to send in soon whatever they can.

THE CHASE COMET.

The astronomical world is quite well aware of the quality of the work done at the Yale Observatory. But the rest of us don't know much about it. The buildings are far out on Prospect hill, and away from the center of things. It does its careful nocturnal work most quietly and the workers says little about it.

For that reason Dr. Chase's important comet discovery was all the more gratifying. It illustrated in a particularly happy way the accuracy and thoroughness of the Observatory's work in its peculiar field. No one was sweeping the heavens for a comet, and the discovery was a surprise; but it was far from luck. These photographic plates were so perfectly made and so carefully inspected that it was not possible that such a wanderer, coming within the field of observation, should escape. Dr. Chase deserves the warm congratulations he has received. He has done well for Astronomy and for Yale.

THE FACULTY CHANGES.

Brief Sketches of the Men Recently Appointed and Advanced.

At its meeting on Thursday, Nov. 17, the Corporation, as before announced in the WEEKLY, raised to full professorships in Mathematics the two assistant professors in that subject, William Beebe and James Pierpont. At the same time George F. Eaton was appointed Assistant in Osteology in the Peabody Museum. Two weeks before that date George Henry Nettleton was appointed instructor in English in the Sheffield Scientific School. Brief sketches of the above men follow:

William Beebe was born on September 4th, 1851, at Litchfield, Conn. He prepared for College at the Litchfield Select Academy, and graduated from



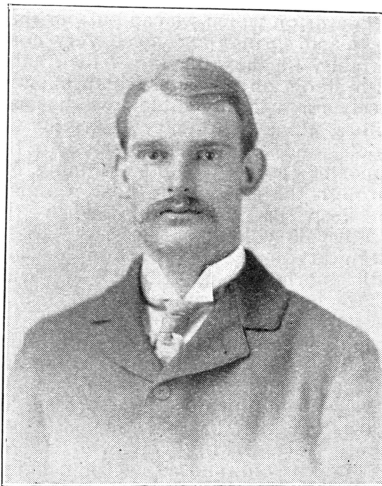
WILLIAM BEEBE, B.A.
PROFESSOR OF MATHEMATICS.

Yale with the Class of Seventy-Three. In the Fall of 1874 he took up the study of Mathematics and Astronomy at New Haven, devoting part of his time to the instruction of private pupils. In 1875 he was appointed College tutor, and from the Autumn of 1876 until 1882 he held this position, when he was elected Assistant Professor of Mathematics, which position he held until his election as full professor at the present time.

James Pierpont was first connected with the University when, in 1897, he was elected Assistant Professor in

Mathematics, which position he has held until his election to the full professorship. Most of Professor Pierpont's work has been done in connection with graduate students.

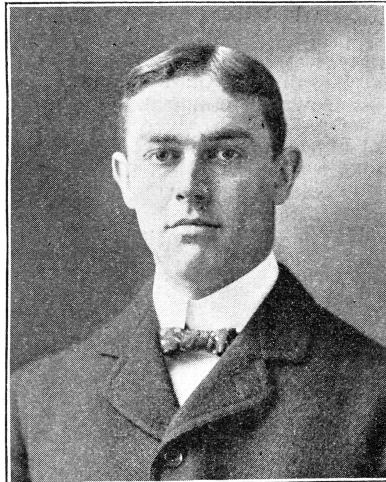
George F. Eaton, '94, who was recently appointed Assistant in Osteology at the Peabody Museum under Professor O. C. Marsh, '60, is the son of



GEORGE F. EATON, PH.B.
ASSISTANT IN OSTEOLOGY.

Daniel C. Eaton, '57, Professor of Botany in the Sheffield Scientific School. He prepared for College at the Hopkins Grammar School and then entered Yale. After graduating in 1894, he spent two years in the Graduate Department of the University under Professor Marsh and received the degree of Ph.D. in 1898.

George Henry Nettleton prepared for College at Phillips Andover Academy. He then entered Yale and graduated with the Class of Ninety-Six with a



GEORGE E. NETTLETON, B.A.
INSTRUCTOR IN ENGLISH, S. S. S.

Philosophical Oration. He was prominent in literary work, being an Editor of the *Literary Magazine* and the *Courant*. Since graduation Mr. Nettleton has studied English in the Graduate Department of Yale University, except a few months of 1897 spent in study in Europe.

NEW YORK LIFE
INSURANCE COMPANY.

JOHN A. MCCALL, PRESIDENT.

This Company has been in successful operation since 1845, and has now over 300,000 policy-holders and over \$200,000,000 in assets. It offers the most privileges and on the most favorable terms, of any Company. Under its new system of classifying and compensating agents, it offers to young men continuous employment and a life income. Its policies and agents' contracts will interest all students.

NEW YORK LIFE
INSURANCE COMPANY,
346 & 348 Broadway,
NEW YORK.

Money for the Mission.

The Yale Mission, whose achievements and needs were set forth in the last issue of the WEEKLY, has found a good friend in Mr. John W. Hendrie of the Class of Fifty-One. After reading the statement of the case, Mr. Hendrie sent his check for one hundred dollars to Dr. T. T. Munger, his classmate, who turned it over to Mr. Fisher, the graduate treasurer.

Mr. Hendrie is the man who has given so generously for the Law School Building, his gifts for that purpose amounting to date to \$35,000.

Wigwam Meeting.

The first regular meeting of the Sophomore Wigwam was held at Stewart's on December 1. J. M. Hopkins, 1900, explained the object of the Wigwam and the society was then organized and divided into camps with the following officers: Chairman of Alpha Camp, A. H. Richardson; Chairman of Omega Camp, R. H. Edwards; Leader of Alpha, P. L. Mitchell; Leader of Omega, Ray Morris; Secretary and Treasurer, J. B. Chamberlain. The first debate will be held on December 15 on the following subject: "Resolved, That the elective system should be extended to Sophomore year."

Chicago Joint Smoker.

A joint smoker was given the Friday night before the Yale-Harvard football game, by the Yale, Harvard and Princeton Chicago Alumni Associations, at 116 Dearborn street. The meeting was informal, but the house was crowded to its fullest capacity.

The Yale alumni, before the smoker, elected the following officers: President, Alfred Cowles, '83; First Vice-President, Charles R. Corwith, '83; Second Vice-President, George B. Phelps, '80 S., and Secretary and Treasurer, R. F. Crane, Jr., '95 S.

Among those present from Yale were: W. S. Hull, '70; H. B. Mason, '70; E. C. Smith, '75; C. L. Bartlett, '76; C. M. Dawes, '76; E. R. Dillingham, '77; W. D. Allen, '78 S.; T. B. Marston, '79; O. H. Waldo, '79; G. W. Meeker, '79 S.; R. D. Martin, '80; G. B. Phelps, '80 S.; S. L. Williams, '82 S.; F. R. Bartlett, '83 S.; W. G. Sage, '84 S.; C. R. Britton, '85 S.; J. B. Keogh, '85; Alfred Cowles, '86; C. T. Morse, '87; I. C. Copley, '87; H. F. Perkins, '87; S. J. Walker, '88; J. D. Gold, '88 S.; C. F. Baldwin, '88; G. D. Holmes, '90; A. B. Newell, '90; C. H. Hamill, '91; H. W. Holcomb, '91; A. J. F. McBean, '91; H. R. Rathbone, '92; E. H. Mason, '92; C. H. Ewing, '93; O. E. Babcock, '94 S.; C. P. Belden, '93 S.; L. C. DuPee, '93 S.; D. P. Wilkinson, '94 S.; J. R. Trowbridge, '94; D. B. Lyman, '95; G. C. Clarke, '95 S.; R. B. Mason, '95; J. R. Williams, '95; E. E. Osgood, '95; A. S. Peabody, '95; H. G. Miller, Jr., '95; H. D. Baker, '96; W. S. Miller, '96; C. B. Coleman, '96; R. B. Treadway, '96; J. H. Winterbotham, '97; J. C. Belden, '97 S.; E. H. Noyes, '97 S.; H. L. Rogers, '97 S.; M. T. Clark, '97 S.; L. B. Hamlin, '97 S.; W. B. Wood, '97 S.; J. S. Mason, '98; P. W. Hamill, '98.

"Outing" for December.

The contents of *Outing* for December are: "A New Brunswick Moose," by Frank H. Risteen; "Line Shooting on Long Island Sound," by C. H. Chapman; "The Green Spring Valley Hunt Club," by Hanson Hiss; "The Collie and the Sheep Dog," by H. W. Huntington; "From the Schuylkill to the Potomac Awheel," by George H. Streaker; "With Quail Among the Cotton," by Wirt Howe; "The Crew of the Restless," by George Leovy; "The New York Athletic Club," by Malcolm W. Ford; "Sporting Rambles in Ceylon," by F. FitzRoy Dixon; "To Spread Her Conquests Further," by Helen M. Stafford; "The Yarn of the Tampa," by E. L. H. McGinnis; "Golf and the American Girl," by H. L. FitzPatrick, and the usual editorials, poems and records.

Yale Law School.

For circulars and other information apply to

Prof. FRANCIS WAYLAND,
Dean.