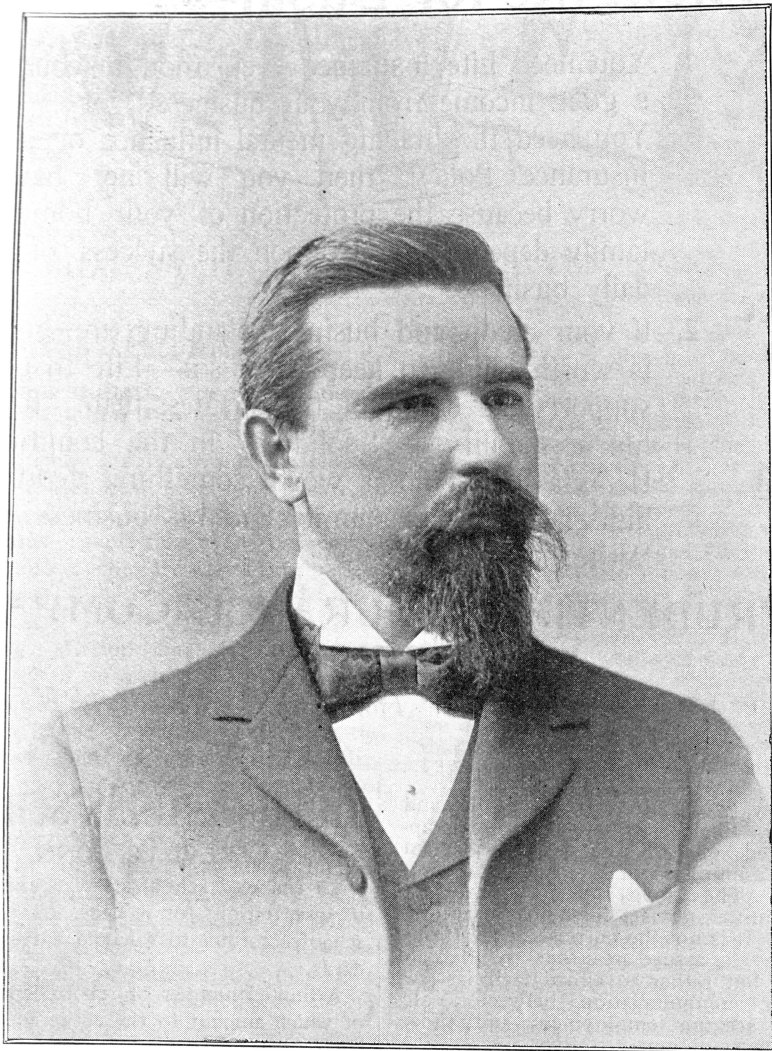


PROFESSOR RUSSELL HENRY CHITTENDEN.



Photograph by Pach.

Appointed Director of the Sheffield Scientific School to Succeed Professor George Jarvis Brush.

**THE CRUISER SURPLUS.**

**The Committee Desire to Use It for Some Sort of a Memorial.**

The Yale Cruiser Fund Committee, which gathered the money for the guns Handsome Dan and Eli, which were placed on the Cruiser Yale, and for the set of colors for that boat, held a meeting at half past ten on Saturday morning, November 19, at 11 Phelps Hall. The meeting was called to consider the question of the disposition of the surplus funds. It will be remembered that the amount needed for the guns was considerably over-subscribed last Spring.

The amount now in the hands of the Trustees appointed by the Committee is about \$2,400. The Committee voted to use enough of this money to meet the bills incurred last Summer, after the Committee's last meeting, for the care of the Yale Battery. The money was expended in a medicine chest, with surgical instruments and other sanitary appliances; also for such expenses in bringing the needs of the Battery before the attention of the authorities at Washington. These needs were in the way of equipment and proper training, to place the men in condition for services when they should be needed. It was almost a constant work on the part of several alumni all Summer to supply the omissions. The moneys that were used for this were of course advanced by alumni, and at the meeting on Saturday it was simply suggested it might be wise to reimburse those alumni, as the sum amounted to several hundred dollars and was in addition to subscriptions already made for the Cruiser Fund and work done in that connection. The matter was laid before the Committee, because, at its last meeting, it had especially inquired whether it was not possible to give some assistance to the Yale platoon. At that time, owing to insufficient information on the subject, no opportunity was offered. It was, however, plainly the desire of the Committee to use some of the money in this direction if it were possible.

It was also voted to save a sufficient sum to care for the guns that were on the Yale, should the Government decide to locate them in New Haven, pending any need of them in the future.

Then it was voted that the chair appoint a Committee of five, to audit the expenditures on behalf of the Yale Battery and of the guns, and to take in charge the disposition of the surplus remaining after this was done. This Committee was given full power, subject only to the condition that the money must be used for a memorial for Yale men who have died in the service of their country. The purpose is to commemorate those men who fell in the recent war. Should, however, a movement be inaugurated for a memorial for all of the men of Yale who have fallen in the country's wars, the wish of the Committee is that the money be turned in to that purpose. This Committee will confer with representatives of those classes represented in the death list of the last war to the end of securing united action in the matter of a memorial. Some means will be taken by the Committee to learn whether any contributors to the fund object to the plan of disposing of it. The scheme, when definitely decided on, will probably be published.

Mr. Dwight H. Day, the Chairman of the *News*, was Chairman of the meeting and Mr. H. B. Wright, '98, was Secretary.

**Yale-Princeton Scores.**

The scores of all the football games played between Yale and Princeton since 1883 are as follows:

- 1883—Yale 6; Princeton 0.
- 1884—Yale 6; Princeton 4.
- 1885—Princeton 6; Yale 5.
- 1886—Yale 4; Princeton 0.
- 1887—Yale 12; Princeton 0.
- 1888—Yale 10; Princeton 0.
- 1889—Princeton 10; Yale 0.
- 1890—Yale 32; Princeton 0.
- 1891—Yale 19; Princeton 0.
- 1892—Yale 12; Princeton 0.
- 1893—Princeton 6; Yale 0.
- 1894—Yale 24; Princeton 10.
- 1895—Yale 20; Princeton 10.
- 1896—Princeton 24; Yale 6.
- 1897—Yale 6; Princeton 0.
- 1898—Princeton 6; Yale 0.

**LUCAS**  
OF HAMILTON PLACE  
BOSTON.

**Architectural Drawing.**

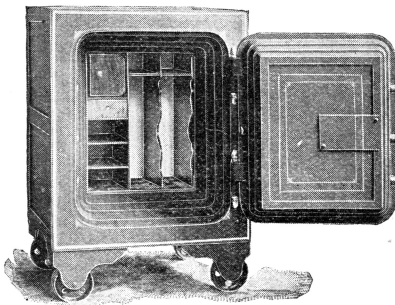
As announced in last year's WEEKLY, a new elective course in Elementary Architectural Drawing has been offered in the Art School this year. Twelve students elected the course this year, but owing to insufficient preparation six of them were advised not to take it up. At present the course is laid out for one year, and whether or not it will be laid out for two years is a matter which is yet to be decided. The course is more or less of an experiment, as the attempt is being made to build it up without any definite financial support, but owing to the great demand for this course Professor Niemeyer concluded that it should be undertaken at any rate, in the hope that money would soon be forthcoming to establish it as a regular and fully developed course in Architecture. A friend of the University has already contributed \$100 with which to purchase some very necessary and expensive books.

**F. R. BLISS & CO.**  
TAILORS

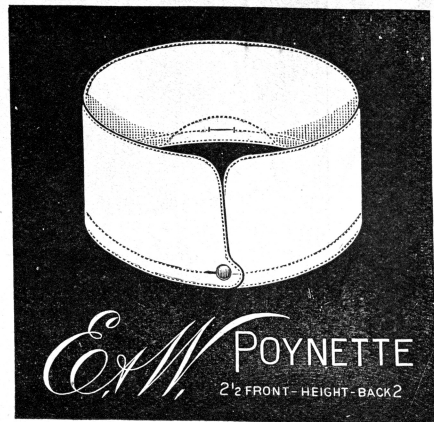
NEW HAVEN, - CONN.

**PACH BROS.,**  
COLLEGE PHOTOGRAPHERS,  
1024 Chapel St., New Haven.

Branch of No. 935 Broadway, - New York



**DIEBOLD SAFE & LOCK CO.,**  
H. W. BEADLE, GEN'L AGENT,  
79 Duane Street, - New York.



**POINTS ON POLICIES.**

"History is Philosophy teaching by Examples."

So if one doesn't know already about the PHOENIX MUTUAL a fact like this that follows may be a good teacher.

**Policy 44,597,**

On the life of H. H., of Benson, Vt.  
Ordinary Life, - Age 41.  
Annual premium, \$31.46.  
Original amount, - - - \$1,000.00  
Dividend additions credited to the policy on payment of 1897 premium, - - - \$465.00  
Total amount of Insurance, - \$1,465.00  
So that the face value of the contract is now over 146% of its original amount.

**PHOENIX MUTUAL LIFE INSURANCE CO., HARTFORD, CONN.**

J. B. BUNCE, *President.*  
JOHN M. HOLCOMBE, *Vice-Pres't.*  
CHAS. H. LAWRENCE, *Secretary.*

**Mory's** - -  
... *Louis Linder.*

**NEW YORK - FLORIDA - CHARLESTON**

**EXCURSIONS**  
A TO A  
**FLORIDA AND THE SOUTH**  
NEW YORK TO JACKSONVILLE **\$43.30**  
AND RETURN FIRST CABIN  
Intermediate Cabin, **\$35.30**  
CHARLESTON AND RETURN **\$32.00** FIRST CABIN  
Intermediate Cabin, **\$24.00**  
Above Rates include Meals and Stateroom Accommodations...  
Tri-Weekly Sailings from Pier 29, East River, New York....

**CLYDE LINE**

THEO. G. EGER, Traffic Manager, WM. P. CLYDE & CO., General Agents,  
5 BOWLING GREEN, NEW YORK.  
A. P. LANE, New England Passenger Agent, 201 Washington St., Boston.