

THE PRESIDENT RESIGNS.

Professor Brush also Retires—The Corporation Meeting.

The Yale Corporation at its meeting on Thursday of last week received the resignation of President Dwight. The members of the Corporation were surprised beyond measure by the announcement.

The fact that Professor Brush had declined another election to the directorship of the Scientific School was also first formally announced at the meeting.

The President of the University presented the resignation of his office in the following letter:

"YALE UNIVERSITY, Nov. 17th, 1898.
To the Corporation of the University.

"Gentlemen:—It has been my conviction for many years that it is desirable—alike with reference to his own happiness in the later, less active and more restful period of life, and as related to the highest interests of the institution—that a person who is placed in the chief administrative office in a large university like ours should not continue in that position beyond the age of seventy. In accordance with this conviction, I have had the purpose, ever since I entered upon the Presidency, to offer my resignation at the time when I should myself reach that age. As that time has just now arrived, I make known to you my desire to withdraw from the duties of my office at the close of the present academic year, and my wish that, at the regular meeting of your body which is to be held in May or at the meeting which will take place in June, you should elect a President of the University who shall enter upon the duties of his position immediately after the next annual Commencement.

"As I make this announcement of my wishes and present to you this request, I trust that it may not seem inappropriate for me to express the pleasure which I have in the thought that, in my official relations to the institution, I have from the outset enjoyed the blessing which comes from the existence of a generous sentiment on the part of the membership of the University, both in its older and its younger sections and also in the thought that there is no one, so far as I know, among the company of Yale graduates whose residence and work are outside of the University limits or among the friends of Yale, who has other than kindly feelings toward me personally at the present hour. The friendship of the Yale brotherhood, abiding with me as it has done in the past and enduring as it does even to the closing days, is the best reward of my long-continued and happy life in the service and fellowship of the University.

"With sentiments of the highest esteem and with grateful acknowledgment of your uniform kindness and friendly consideration, I am, gentlemen,

"Very sincerely and truly yours,
TIMOTHY DWIGHT."

After a recess of an hour had been taken the following resolutions, drawn up by the Hon. F. J. Kingsbury, '46, were unanimously passed and presented to the President on his return to the room:

"The announcement by the President of his resignation of his office to take effect at the end of this university year has come to the Corporation as a great surprise, and they would most profoundly regret it if they believed it was necessary to accept this action as final and conclusive.

"While testifying their affectionate admiration for him personally and their gratification with his administration, the Corporation most earnestly request and urge him to fix the date of his retirement at the time of the Bi-Centennial celebration in 1901. Therefore,

"Resolved, That the Corporation earnestly request of the President to delay the date of his retirement until October, 1901."

The President subsequently expressed his feeling that he must abide by the decision announced in his letter; and the letter was then referred to a special committee, to report at a meeting of the Corporation to be held on December 13th.

PROFESSORS APPOINTED.

During the routine portion of the Corporation meeting, thanks were voted to Miss Helen E. Carpenter of West Woodstock, Conn., for the gift of an interesting portrait of the Rev. Dr. Jedediah Morse (Yale 1783), painted by his son, Samuel F. B. Morse, about 1810.

Dr. George F. Eaton (Yale 1894) was appointed Assistant in Osteology in the Peabody Museum.

Assistant Professor Benjamin Moore, of University College, London, a graduate of Queen's College, Belfast, was appointed Assistant Professor of Physiology in the Medical School, in the place of Prof. Lusk, resigned.

Assistant Professors Beebe and Pierpont were made full Professors of Mathematics in the College.

Professor George J. Brush, who has held a professorship in the Scientific School since 1855, resigned his chair and was appointed Professor Emeritus. Professor Brush having already declined a re-election to the position of Director of the Sheffield School, which he has held since the creation of that office in 1872, the election of Prof. R. H. Chittenden as Director of the School was confirmed.

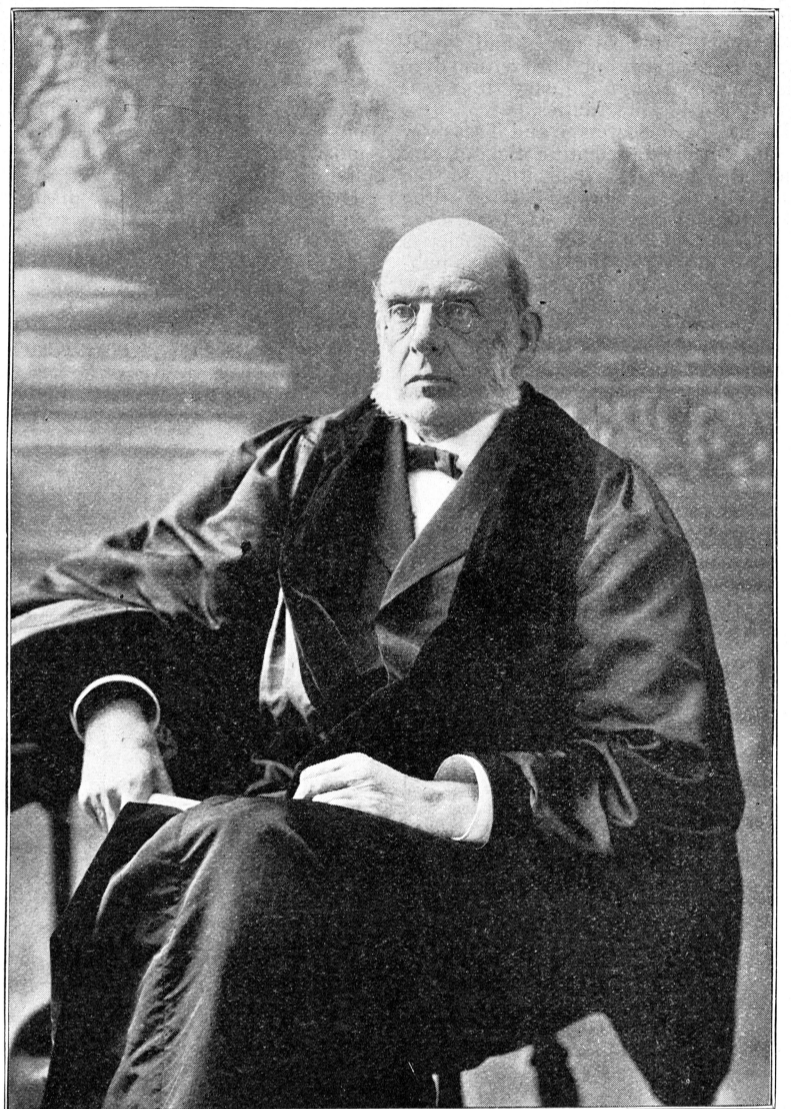
Sketches of Pres. Dwight and Profs. Brush and Chittenden.

PRESIDENT TIMOTHY DWIGHT.

Timothy Dwight was born in Norwich, Conn., on November 16, 1828, and graduated from Yale College with the Class of Forty-Nine. He studied in the Graduate Department from 1849 to 1851, when he entered the Yale Divinity School, and pursued his studies there until 1853. He was licensed to preach on May 22, 1855, and on September 15, 1861 was ordained to the ministry. On January 26, 1856, he went to Europe, where he studied at the Universities of Berlin and Bonn until the summer of 1858. He was elected Assistant Professor of Sacred Literature at the Yale Divinity School, on September 16, 1858, and became Professor in the same Department in 1861. This office he held until 1886, when he was elected President of Yale College.

He received the degree of Doctor of Divinity from the Chicago Theological Seminary in 1869 and a like degree from Yale College in 1886. He received the degree of Doctor of Laws from Harvard in 1886 and from Princeton in 1888. From 1866 to 1874 he was associate editor of the *New Englander*. He has also contributed to a large number of magazines and edited a number of books, and was a member of the American Committee for the revision of the English version of the Bible.

PRESIDENT TIMOTHY DWIGHT.



Photograph by Randall.

Resigned from the Presidency of Yale University, Nov. 17, 1898.

On December 31st, 1866, he married Miss Jane W. Skinner, the daughter of the late Roger Sherman Skinner of New Haven, Conn.

During President Dwight's administration the prosperity of the University reached its highest point. He was inaugurated as President on July 1st, 1886, and one of his earliest official acts was to propose to the Corporation the change of the name Yale College to that of University, which name was adopted in the early part of the year 1887. In his first annual address he laid especial stress on the need of more dormitories, of bequests for scholarships, and of new halls and recitation buildings.

His labors in this direction first bore fruit in the completion of the Kent Laboratory in 1888, the funds for the erection of which had been offered before 1886. Osborn Hall was completed in 1889 and Chittenden Library in the following year. In 1892 the Gymnasium was completed, as also were Welch and Winchester Halls and the Infirmary on Prospect Street. In 1893 the seating capacity of Battell Chapel was increased by about 400 sittings and the Laboratory Building of the Medical School completed. In 1894 Vanderbilt and White Halls were presented to the University, as was Berkeley Hall, adjoining White. 1895 saw the Chemical Laboratory of the Scientific School and the Law Building completed and in 1896 Phelps and Pierson Halls, the former at the cost of about \$120,000. In this same year Farnam Gateway was

built, and the College Street Hall purchased by the Corporation. Fifteen new University buildings have been erected, five buildings have been altered and enlarged and one acquired by purchase since President Dwight took up his duties as the University's executive. A great deal of land in proximity to the Campus has also been purchased.

The growth of the number of students during President Dwight's presidency has been very remarkable, in 1886 there being 1,076 and to-day over 2,500,—about twice as many. The number of instructors has also been more than doubled.

During President Dwight's administration, the elective system in the College has had its main development, the Graduate Department has been strengthened, the Music Department has been established, the first movement toward a University fund started, the co-education system in the Graduate Department adopted, and the whole aspect of the Campus has been changed.

PROFESSOR GEORGE J. BRUSH.

Professor George Jarvis Brush was born in Brooklyn, N. Y., on December 15, 1831. He was educated at the schools of Brooklyn, Danbury, and West Cornwall, Conn. In 1846 he went into business at New York, but two years later, owing to a very severe cold, he decided to take up farming, and