

Messrs. Tiffany & Co. have just placed on sale a new pattern of forks and spoons and table service generally, upon which their artists and die sinkers have been employed for many months.

Intending purchasers will find it to their advantage to see this new pattern before making a decision.

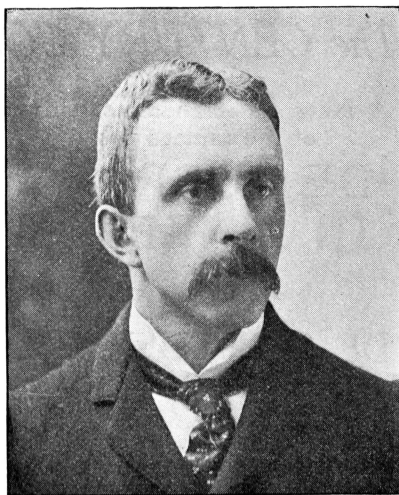
UNION SQUARE  
NEW YORK

[Continued from 64th page.]

but at the British Museum, the Sorbonne, and the University of Berlin, his work is highly valued and his scholars always cordially received. Within the past year he has published a book on "Biblical Quotations in Old English Prose Writers," assumed the editorship of the Department of English of the newly established *Journal of Germanic Philology*, and is at present bringing out a series of Yale English Studies which will contain the most important researches made by Graduate students.

Assistant Professor Phelps became Instructor at Yale in the Fall of 1892, and has already had unusual success as a teacher. Thoroughly in touch with the undergraduates, he has the faculty of arousing in his pupils a deep interest in reading and has already done much for the literary awakening which is a conspicuous part of current Yale history. As a lecturer, apart from his

tive work. Yale has never believed in the system of daily themes; the Yale system favors fewer themes more carefully prepared, with thorough, personal criticism. Prof. Baldwin has accomplished a great deal within the short time he has been connected with Yale, and, in addition to his Sophomore



WILBUR L. CROSS  
ASSISTANT PROFESSOR OF ENGLISH.

work, offers an elective to Juniors. He has been fortunate in his assistant, Mr. C. W. Wells, who received his appointment in 1896. Mr. Wells was Chairman of the *Yale Literary Magazine*. He has received his training from Prof. Baldwin and is doing admirable work in his position.

Mr. Emerson G. Taylor, of the Class of Ninety-Five was appointed Assistant in Rhetoric at the opening of the present term. Mr. Taylor has been studying at Yale since his graduation.

Assistant Professor Lewis has taught at Yale for three years and received his Doctor's degree and an Assistant Professorship in June. His rapid promotion is an indication of the work he has accomplished. His course in English Poets of the Nineteenth Century is the largest English elective for the present year. He also offers a special course in the English Renaissance. His recently published thesis on the Foreign Sources of English Versification is a piece of scholarly investigation of a very high standard.

Dr. Reed, who had charge of the Freshman work the past year, graduated in 1894, took his Doctor's degree in 1896, and spent the following year in study in Paris and Munich. He shares with Prof. Lewis the required Sophomore work, and offers a special course in Lyrical Poetry.

The latest addition to the force is Dr. Frank H. Chase, valedictorian of the Class of Ninety-Four. Dr. Chase has made a special study of Old English Syntax, and though but a recent graduate, is already an authority on this subject. During the past year, he has been studying at the British Museum and Berlin, and, for the present year, conducts the Freshman work. He also



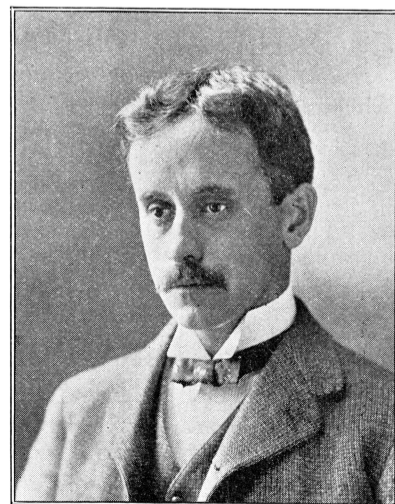
ALBERT S. COOK  
PROFESSOR OF THE ENGLISH LANGUAGE  
AND LITERATURE.

college work, he has had marked success. With the growth of the Department, he has been enabled to withdraw from the required work, and offers for the following year, electives in Chaucer, Seventeenth Century Literature, American Literature, and Tennyson and Browning.

Assistant Professor Cross of the Scientific School began work at Yale in 1895. He has had charge of the Freshman English there, and during Prof. Lounsbury's absence, has taken his work. He has made a particular study of English fiction, especially in its origins, and its connection with foreign literature, and offers, on this subject, one of the most valuable courses in the Graduate Department.

Mr. George H. Nettleton of the Class of Ninety-Six has recently been appointed Instructor in English in the Scientific School. Mr. Nettleton will have charge of a part of the Freshman work, and will conduct a Junior class in Composition.

To Assistant Professor Baldwin has fallen the task of organizing the Rhetorical Department, and though in need of more assistants, he has done very effec-



CHARLTON M. LEWIS  
ASSISTANT PROFESSOR OF ENGLISH  
LITERATURE.

offers an elective on the History of the English Language.

The advance made in the undergraduate work has been briefly mentioned and a glance at the catalogue will show what instruction the four classes are receiving. The catalogue, however, can not indicate what is being accomplished by the Graduate School. Graduate

From one end of the land to the other, wherever men who demand the best are found, Fownes' Gloves are the recognized standard of merit and fashion. They are best for dress, for the street, for riding, driving, or golfing — for all occasions and all purposes. To wear them is to be correctly gloved. All leading haberdashers sell them.

work is becoming more and more important as the University idea grows. Formerly, a teacher was fully equipped with his Bachelor's degree; now, a Doctor's degree is almost a necessity. The number of students seeking advanced courses in English is yearly increasing and will continue to increase, and Yale can not maintain her prestige unless she offers them unusual advantages. The English Department has realized this and is meeting the requirement, as the number of graduate students attracted to Yale well indicates.

For the present year, six professors and assistant professors offer eighteen graduate courses in English. Prof. Cook offers but one undergraduate elective, and therefore practically devotes his time and energy to advanced students. Only those who have studied under him can appreciate the interest he takes in the individual and the care with which he follows his work.

The aim of these Graduate courses is to give the student a thorough training in the two branches of language and literature. For a number of years there has been an exodus of students of English to Germany, and the idea has been prevalent that a German professor can best teach our language and interpret our writings. A Doctor's degree from Germany has implied the highest possible training. With the growth of graduate work in American universities, this state of affairs is changing, and in this particular field the German universities must soon share with others their prestige. With the present attitude of Oxford and Cambridge towards English studies continued, it is safe to predict that the tide will turn, and in the course of a decade one may see foreign students beginning to come to America for their English instruction.

What Germany has to offer in graduate work is preëminently Old and Middle English. In Prof. Cook, a pupil and friend of Prof. Siever, Yale has an authority in this field, and it is not exaggerating the facts to assert that neither at Berlin nor at Leipsic can the student of our early language receive a training more thorough than that given him at New Haven. The tributes paid by Germany to Prof. Cook's scholarship are the best proof of this. In the field of early English Syntax Dr. Chase is one of the foremost

workers, and in the period of Chaucer it is only necessary to mention Prof. Lounsbury's course.

In treating of the subject of Language, strong emphasis must be laid upon the hearty coöperation the English Department receives from the Classical and Modern Language Faculties. Owing to the interaction of graduate work, the student of English Philology, using the word in its restricted sense, finds in these Departments a variety of courses bearing an intimate relation to his own special field. Though they can not properly be included in the list of English courses, they form a very vital part of his work.

[Continued on 66th page.]

CHAS. ADAMS. YALE '87. ALEX. MCNEILL. WM. S. BRIGHAM. YALE '87.

ADAMS, MCNEILL & BRIGHAM,  
BANKERS & BROKERS,  
71 Broadway, - New York.

Members New York Stock Exchange. Stocks and Bonds Bought and Sold. Investment Securities a Specialty.  
"Long Distance Telephone, 2976 Cortlandt."

LEOPOLD H. FRANCKE. YALE '89. ALBERT FRANCKE. YALE '91 S.

L. H. & A. FRANCKE,  
BANKERS AND BROKERS.

50 Exchange Place, - - - New York.

Members New York Stock Exchange.  
Buy and Sell on Commission Stocks and Bonds dealt in at the New York Stock Exchange. Also Miscellaneous Securities not listed on the Stock Exchange.  
Long Distance Telephone, 1348 Broad.

HOME LIFE  
INSURANCE COMPANY  
OF NEW YORK.

GEORGE E. IDE, President.

WM. M. ST. JOHN, Vice-President.  
ELLIS W. GLADWIN, Secretary.  
WM. A. MARSHALL, Actuary.  
F. W. CHAPIN, Medical Director.

EUGENE A. CALLAHAN,  
General Agent, State of Connecticut.  
23 Church Street, New Haven.

A BIT OF HISTORY.

[From Woodward's "Insurance in Connecticut?"]

The Aetna escaped the fire of December 16th, 1835, in New York City—the first in the series of great American conflagrations—which destroyed property to the value of \$15,000,000, and bankrupted twenty-three out of twenty-six local insurance companies. It entered the city the following year, having for agent Augustus G. Hazard, afterwards the organizer and president of the Hazard Powder Company of Enfield. It was not so fortunate in the fire of 1845, which swept \$6,000,000 of property from the business center of the metropolis, and cost the Aetna \$115,000. When the news reached Hartford, Mr. Brace called together the directors and told them that the calamity would probably exhaust the entire resources of the company. Going to the fire-proof vault, he took out and laid on the table the stocks and bonds representing its investments. Little was said, each member waiting for some one else to take the initiative. At length the silence was broken by the question: "Mr. Brace, what will you do?"

"Do?" replied he. "Go to New York and pay the losses if it takes every dollar there," pointing to the packages, "and my fortune besides."

"Good, good," responded the others. "We will stand by you with our fortunes also."

So it had always been with the Aetna in every crisis which it had before faced. The same spirit had carried this famous Company through where others had gone to the wall.

This was the last close call for the Aetna. To-day with its cash capital of \$4,000,000, a net surplus of nearly \$4,500,000, and a system built on the priceless experience of seventy-nine years, it is hardly possible to conceive of its having a close call.