

COACHES ARE HERE.

[Continued from 54th page.]

flicted for holding in the line. West Point had two excellent chances to score from drop kicks, but both of Kromer's attempts were unsuccessful.

A succession of punts followed West Point's opening kick-off, on which Yale was consistently gaining until McBride fumbled Romeyn's return kick and Baender fell on the ball on Yale's thirty-five-yard line. A fifteen-yard end run by Waldron brought the ball within easy range of the Yale goal, but Kromer's drop-kick missed the post by a narrow margin. Following McBride's punt out Yale secured the ball for holding, on West Point's fifty-yard line. Short rushes by the three Yale backs carried the ball thirty yards down the field, where West Point steadied her defence and secured it on downs. Romeyn punted and Yale had again advanced to West Point's twenty-yard line on her rushing tactics, when the ball changed hands for holding. An exchange of punts followed, McBride and Kromer both making brilliant return runs.

With the ball in West Point's possession on her own forty-five-yard line, Bettison made a pass over Romeyn's head and the result was a thirty-five-yard loss. McBride made a sensational dash of twenty-five yards on catching Romeyn's punt which followed, and, after four short plunges by the Yale backs, McBride was pushed across the line for a touchdown. A punt out by Chamberlin put the ball in good position, but Brown failed to kick the goal. Immediately after the kick-off by the Cadets, time was called.

WALDRON'S SENSATIONAL RUN.

Romeyn's return punt on Chamberlin's kick-off gave the ball to Yale on her own forty-five-yard line. On an exchange of punts and two fierce line plunges by Wear, who had been substituted for Gilmore, Yale advanced fifteen yards, when the ball changed hands because of off-side play. On the next line-up Waldron got around the left end of Yale's line for a sensational fifty-yard run. With the ball within forty yards of Yale's goal the West Point backs advanced twenty-yards more on short plunges into the line, when Yale steadied her defense and held the Cadets for three downs. The backs made good gains through the line and McBride followed with a punt to the middle of the field. After short gains by Waldron and Romeyn, the Cadets tried the quarter-back kick with such success that Ennis fell on the ball, on-side, at Yale's twenty-five-yard line. At this point Kromer made his second attempt at scoring from a goal from the field, but the ball went low. An exchange of punts followed McBride's kick-out, and Romeyn fumbling, Coy fell on the ball on West Point's twenty-five-yard line, Yale had advanced to within four yards of the West Point goal on consistent gains by the three backs, when there was holding in the line and the ball went to West Point. Sullivan made a return run of twenty yards on Romeyn's punt and from this point McBride and Marvin alternated in line plunges and end runs until thirty-five yards had been covered and Marvin was pushed across for the second touchdown. Again Brown failed to kick an easy goal. With a little over a minute to play the Cadets kicked off. Marvin had made two effective line plunges and Wear a brilliant run of fifty yards around West Point's right end, when time was called with the ball on West Point's thirty-yard line.

The line-up and summary:

YALE.	POSITION.	WEST POINT.
Hubbell	left-end-right	Baender
Allen	left-tackle-right	Foy
Brown	left-guard-right	Ennis
Cutten	center	Bettison
Marshall	right-guard-left	Burt
Chamberlin	right-tackle-left	Heidt
Coy	right-end-left	Schull
Sullivan	quarter-back	Kromer
Marvin	left-half-right	Humphrey
Gilmore	right-half-left	Waldron
Wear		
McBride	full-back	Romeyn

Score—Yale, 10; West Point, 0. Touchdowns—McBride and Marvin. Referee—L. deP. Vaile of U. of P. Umpire—Thompson of Princeton. Linesmen—H. L. Harris, West Point and D. R. Francis, Yale. Timekeepers—E. M. Adams, West Point, and L. E. Stoddard, Yale. Time of halves—Twenty minutes.

Yale 1902, 28—Brown 1902, 0.

On Thursday, October 27, the Yale Freshmen defeated the Brown Freshmen at the Yale Field, by the large score of 28 to 0.

The Yale team entirely outclassed their opponents in weight and in general knowledge of the fine points of the game, but the Brown men played pluckily. The majority of the defects visible in the team's work would seem to be such as careful coaching and hard work on the part of the men themselves could remedy before the big games. Rumsey, Adams and Ward, made the largest gains for Yale.

The summary and line-up is as follows:

YALE 1902.	POSITION.	BROWN 1902
Gould	left-end-right	Hunt
Hart		
Swan	left-tackle-right	Potter
Hooker	left-guard-right	Phipps
Cunha	Center	Mason
Blagden	right-guard-left	O'Riley
Gile		
Ferguson	right-tackle-left	Pevear
Abbott	right-end-left	Shaw
Morris	quarter-back	Briggs
S. D. Ward	left-half-back-right	O'Riley
G. B. Ward		
Adams	right-half-back-left	Pinkham (Capt)
Feeter		
Rumsey	full-back	Kendall

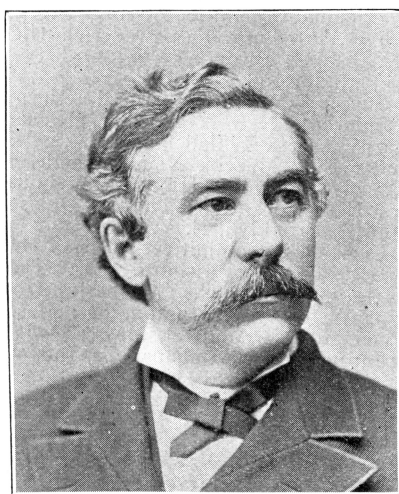
Score—Yale 1902, 28; Brown 1902, 0. Touchdowns—S. D. Ward, 2; Rumsey, 2; G. B. Ward, 1. Goals from touchdowns—Rumsey, 3. Umpire—Mr. Townsend, 1902 S. Referee—Mr. Ely, 198. Linesmen—A. V. Wear, Yale; H. S. Johnson, Brown. Time of halves—20 and 15 minutes.

Athletic Calendar.

- Saturday, November 5.—Yale-Chicago Athletic Club game at New Haven.
- Saturday, November 12.—Yale-Princeton game at Princeton.
- Saturday, November 19.—Yale-Harvard game at New Haven.

Hon. George P. Andrews, '58.

Hon. George P. Andrews, Yale '58, who has been renominated for Justice of the New York Supreme Court, was born in North Brighton, Me. At Yale, he was the Class Orator. In 1859 he went to New York and studied in the office of W. P. Fessenden. In 1860 he was admitted to the bar and immediately thereafter was made Assistant United States District Attorney of the Southern District of New York. He



HON. GEO. P. ANDREWS.

held this position through the duration of the Civil War, when the demands upon the office were particularly onerous. In 1872 he was made Assistant Corporation Counsel of New York, filling the position under the administration of Corporation Counsel E. Delafield Smith and his successor, Mr. Whitney. At the close of the latter's term of office, Mr. Andrews was made his successor. In 1883, Mr. Andrews was elected to the Supreme Court Bench, where he is now serving his fourteenth year.

On account of extraordinary press of matter the account of the Fall games at Yale Field had to be laid over until the next issue.

A FOOTBALL VACATION . . . FOOTBALL

If you want a rest and plenty of diversion and fun, why not take a few days in New Haven in this snapping football weather and see a Yale rush line whipped into shape? You can stop at

MOSELEY'S NEW HAVEN HOUSE.

F. R. BLISS & CO. TAILORS NEW HAVEN, - CONN.

CHARLES T. PENNELL,

Successor to Wm. Franklin & Co.,

IMPORTING TAILOR,

40 Center St., New Haven, Conn.

THE CHARLES W. WHITTLESEY CO.,

281 State Street.

Photographic Materials Department.

Latest models of Cameras, all makes. Pure Chemicals a specialty. Our Film Development and Printing an exact science. Send or call for Catalogs and a copy of our Bulletin.

ADAM DOCKRAY,

... TENOR ...

TEACHER OF SINGING.

Studio, Rooms 19 and 20, Insurance Building, CHAPEL STREET.

FOOTBALL

As the American Colleges play it, is distinctly an American game. The Englishmen who see it are amazed at the development of Rugby by United States collegians. In all the advances, intricacies and elaborations of the sport, the football specialists have found one firm in the United States always ready to meet, and even often to anticipate their needs. This is one notable example of the up-to-date-ness of

A. G. SPALDING & BROS.

New York.

Chicago.



We make the engravings used in the "ALUMNI WEEKLY."

THE BEST GUN IN THE WORLD!

THE OLD RELIABLE

PARKER GUN HAS NO EQUAL!



STRONGEST, SAFEST, BEST. Send for Catalogue. N. Y. Salesroom, 96 Chambers St. PARKER BROS., Meriden, Conn.

WASHBURN'S

Prices from \$15 Up.



Best in the World

COLLEGE men everywhere are invited to send for the Washburn Souvenir Catalog. It contains nearly 300 portraits of artists and collegians, besides giving some account of the construction of Washburn instruments and a complete list of net prices. First-class music dealers the world over sell Washburns, or instruments may be obtained from the makers

LYON & HEALY, CHICAGO.