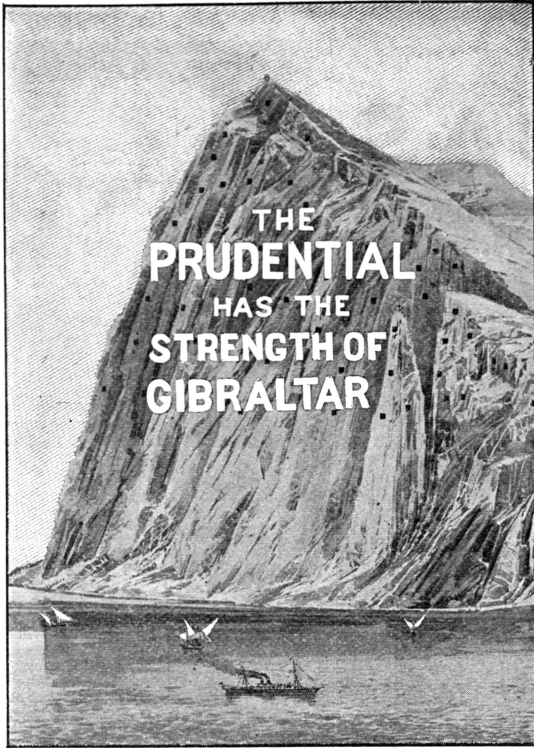


FOR EVERY \$1,000 OF LIABILITIES



IT CAN SHOW \$1,279 OF ASSETS.

THE IMPREGNABLE PRUDENTIAL.

## FALL REGATTA.

Rowed on Lake Whitney, and Won by 1902.

The annual Fall Regatta of the Yale Boat Club was held at Lake Whitney on Saturday afternoon. The course was seven-eighths of a mile with the finish at the lower bridge. Only three crews were entered, the Junior, Sophomore and Freshman. The first race was between 1900 and 1901, and was won by the latter by about a length. After some delay the second race was rowed, the competitors being the winner of the first race and the 1902 crew. The Freshman boat had a handicap of two lengths and were able to keep the lead throughout the race, winning by over a length. No official time was taken, but the approximate time for the first race was 5 minutes and 48 seconds and for the second race 5 minutes and 32 seconds. The time was slow owing to a heavy wind. A banner will be given to the winning crew.

The following men served as officials: Referee, J. T. Whittlesey, '67 S.; time-keeper, E. F. Gallaudet, '93; starter, W. E. S. Griswold, '99; judges for 1900, J. C. Greenway, 1900; for 1902, J. C. Greenleaf, '99 S.; committee on banks, D. H. Day, '99, M. Mills, 1900, B. P. Twichell, 1901, A. Y. Wear, 1902.

The crews were composed of the following men:

1900—Bow, S. M. Wood, 1900; 2, H. W. Babcock, 1900; 3, G. Lovell, 1900; 4, W. E. Minor, 1900; 5, H. C. Zellhoefer, 1900; 6, G. H. Whipple, 1900; 7, J. W. Cross, 1900; stroke, R. M. Paterson, 1900; coxswain, A. B. Babcock, '99 S.

1901—Stroke, C. B. Waterman, 1901; 2, J. D. Ireland, 1900 S.; 3, H. Chappell, 1901; 4, J. A. Keppelman, 1901; 5, R. L. Atkinson, 1901; 6, H. P. Olcott, 1901; 7, P. L. Mitchell, 1901; stroke, R. P. Tyler, 1901; coxswain, H. C. Neal, 1901.

Freshman—Bow, J. Wright, 1902; 2, S. H. Stone, 1902; 3, O. T. McClurg, 1901 S.; 4, H. P. Rogers, 1902; 5, C. Belknap, Jr., 1901 S.; 6, H. L. Laws, 1902; 7, E. I. Low, 1902; stroke, F. S. Warmoth, 1901 S.; coxswain, B. H. Lounsbury, 1901 S.

## Sophomore Class Deacons.

A meeting of the Sophomore Class was held in the Auditorium of Dwight Hall, on Oct. 17, for the election of Class Deacons.

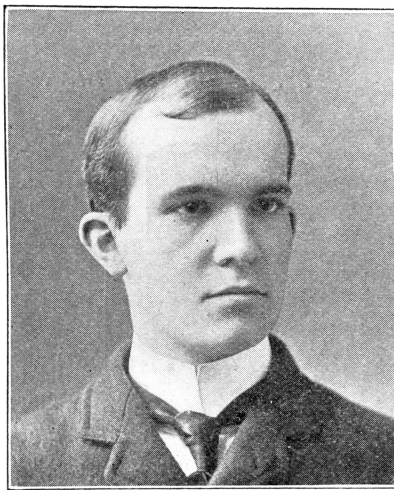
The following men were nominated on the preliminary ballot: Messrs. Edwards, Judd, Yaggy, Hoppin, Berger, Wright, Wear, Richardson, Moody, and Twichell.

The following were elected: Richard Henry Edwards, Lisle, N. Y.; Paul Dwight Moody, East Northfield, Mass.; Allan Harvey Richardson, Waterbury, Conn.; and Alfred Parks Wright, New Haven, Conn.

## The General Secretary.

Henry Burt Wright, the new General Secretary of the College Y. M. C. A., is the eldest son of Dean Henry P. Wright, '68, and was born in New Haven, January 29th, 1877. He was prepared at Hillhouse High School in this city and entered Yale with the Class of Ninety-Eight. He immediately identified himself with the religious life of the College, and throughout his entire course gave a large share of his time and efforts to the work of the Yale Young Men's Christian Association. He was one of the members of the Religious Committee of his class in Freshman year and the next year was elected one of its four deacons. In his Senior year he was elected President of the Y. M. C. A. and under his administration the Association passed one of the most successful years since its organization.

Mr. Wright has left behind him in College, a brilliant record in other lines also. He won the Woolsey Scholarship in his Freshman year, and was one of the speakers at the Junior Exhibition and at the Deforest Prize Speaking. He won besides a number of other prizes, and notwithstanding the numerous claims upon his time, he graduated



HENRY B. WRIGHT, '98.

second in his Class. He brings to his present position not only the thoroughness and earnestness and the personal qualities which made him one of the most prominent men in his Class, in matters social as well as intellectual, but a thorough training in the work of the Association and a clear understanding of its needs. The Y. M. C. A., which has come to play so important a part in Yale life, is fortunate in securing a man so thoroughly in touch with the undergraduates, and so ably equipped to continue the steady growth which the Association has made under his predecessors.

## AN ARMY OF MILLIONS

Profit-Sharing Life Insurance up to \$50,000

Recruited from all sections of the country, are policy-holders in **THE PRUDENTIAL**. At the present time it has nearly three million policies in force.

This is sufficient evidence of the popularity of **THE PRUDENTIAL'S** system of Life Insurance among those who are looking for absolute protection as well as a safe and profitable investment for their money.

No matter what a man's financial circumstances may be, **THE PRUDENTIAL** has a policy just adapted to his needs. Write for information to

## The Prudential Insurance Company

OF AMERICA

JOHN F. DRYDEN, Pres't.

Home Office, NEWARK, N. J.

## The College Pulpit.

The College pulpit will be occupied during the rest of this term by the following preachers:

October 23—Rev. E. M. Chapman, of Worcester, Mass.

October 30—Rev. Geo. Harris, D.D., of Andover, Mass.

November 6—Rev. Prof. George T. Ladd, of Yale.

November 13—Rev. E. B. Coe, D.D., of New York.

November 20—Rev. Prof. G. P. Fisher, D.D., of Yale.

November 27—Open.

December 4—Rev. J. H. Twichell, of Hartford, Conn.

December 11—Rev. C. E. Jefferson, D.D., of New York.

December 18—Rev. C. C. Hall, D.D., of New York.

## Professional Schools.

## YALE MEDICAL SCHOOL.

56th Annual Session, Oct. 6, 1898.

The course leading to the degree of Doctor of Medicine in Yale University is graded, covers four years, and consists of systematic, personal instruction in laboratory, class-room and clinic.

For announcements, send to the Dean.

HERBERT E. SMITH, New Haven, Conn.

## SCHOOLS.

## Columbia Grammar School

Founded 1764.

34 and 36 E. 51st St., New York City.

Prepares boys for entrance to the Academic and Scientific departments of Yale University.—Laboratories.—Gymnasium.

B. H. CAMPBELL, A.M., Headmaster.

## COLLEGIATE SCHOOL.

241 West Seventy-Seventh Street, NEW YORK CITY.

Prepares for the Colleges and Scientific Schools. Well-equipped Gymnasium.

L. C. MYGATT, (Williams), Head Master.

## THE CUTLER SCHOOL,

NO. 20 E. 50TH ST., NEW YORK CITY.

Two hundred and twenty pupils have been prepared for College and Scientific Schools since 1876, and most of these have entered YALE, HARVARD, COLUMBIA or PRINCETON.

## THE LYON SCHOOL,

576 FIFTH AVENUE, NEW YORK CITY.

*Eighteenth Year.*

Prepares for College, Scientific Schools and Business. Number limited to 35. Individual and class instruction combined. Primary Department.

EDWARD D. LYON, Ph.D., Principal.

## THE HOTCHKISS SCHOOL

LAKEVILLE, CONN.

An endowed school, devoted exclusively to preparation for college, or scientific school, according to Yale and Harvard standards.

A limited number of scholarships, some of which amount to the entire annual fee, are available for deserving candidates of slender means who can show promise of marked success in their studies.

EDWARD G. COY, Head Master.

## MR. TAFT'S SCHOOL,

WATERTOWN, CONN.

A Preparatory School for Boys.

HORACE D. TAFT, HEAD MASTER.

## BETTS ACADEMY

STAMFORD, CONN.—60th Year.

Prepares for universities or technical schools. Special advantages to students desiring to save time in preparation. HOME LIFE and the INDIVIDUAL, the key-notes.

WM. I. BETTS, M.A. (Yale), Principal.

## THE KING SCHOOL, STAMFORD, CONN.

One hundred and twelve boys have been successfully prepared here for college in recent years. Of these a large number have entered Yale.

Ten boarding pupils are taken at \$600 each.

## Out-of-Door-Life and Study for Boys.

THE ADDRESS OF

## MR. THACHER'S SCHOOL

is Nordhoff, [Southern] California.

## GIRLS' SCHOOLS.

MISS ANNIE BROWN'S

BOARDING AND DAY SCHOOL FOR GIRLS.

Primary, Preparatory, Academic and Musical Departments. Preparation for college; certificate accepted by Vassar, Smith and Wellesley. Advanced courses and advantages of New York City for special students. Otis Elevator.

711, 713, 715, 717 FIFTH AVENUE.

## ST. MARGARET'S SCHOOL

WATERBURY, CONN.

MISS MARY R. HILLARD, Principal.

Reference by permission to President Dwight, Yale University; Principal C. F. P. Bancroft, Phillips Academy.



## WOODSIDE SEMINARY

FOR GIRLS

SUBURBS OF HARTFORD, CONN.