

THE BROOKLYN DINNER.

News and History of the Successful Long Island Association.

The Yale Alumni Association of Long Island held their thirteenth annual dinner at the Brooklyn Club on Friday night, the 11th inst.

The Yale alumni living in Brooklyn had contented themselves with the privilege of membership in the New York City Association until 1886. Their number had so increased by that time that a local association was formed. It was intended that the Association should include all the graduates living on Long Island, but these are so scattered outside of Brooklyn that the Association has in fact been confined to membership in that Borough of the now Greater City.

The Association has been very successful since its foundation in 1886, its membership exceeding one hundred. It is unique in this, that it is the only college alumni association in Brooklyn, exemplifying by its existence and strength the pre-eminence of the Yale sentiment in this locality. It was inaugurated under the presidency of Benjamin D. Silliman, '24, now oldest living graduate of the College. Rev. Edward Beecher, '22, who likewise held the distinction, at the time of his death being the oldest living graduate, was also a frequent attendant and speaker at the dinners. The other presidents have been the Rev. Charles H. Hall, '42, the late Rector of Trinity Church; Mr. Frederic A. Ward, '62, the leader of the Brooklyn bar, and Mr. William B. Davenport, '67, the public administrator. The latter, after a successful administration of two terms, refused a re-nomination in compliance with an unwritten law of the Association requiring rotation in office, and his successor, chosen just before the dinner, is the Hon. Joseph A. Burr, '71, the last Corporation Counsel of the City of Brooklyn and the candidate of the Republican party for Judge of the Supreme Court at the last election.

The other officers, elected at the same time, were: Vice-President, John K. Creevey, '66; Secretary, Frank D. Tuttle, '87; Treasurer, Wyllys Terry, '85, and the following members of the Executive Committee: Howard Walden, '81; William A. Taylor, '84; Francis J. Vernon, '86; Walter S. Brewster, '89; Frank J. Price, '92, and John Hill Morgan, '93.

About seventy of the alumni attended the dinner. The older graduates were represented by the Hon. John Oakey, '49; Cyprian S. Brainard, '50; Dr. Austen Mathewson, '58; Thomas A. Perkins, '58; Dr. William H. B. Pratt, '64; Everett H. Converse, '65; Edward R. Betts, '66; George C. Brainard, '67; Francis H. Wilson, '67, Brooklyn's postmaster; Alexander Cameron, '69, and graduates of the succeeding classes, including a number of the younger alumni, filled the tables. Hon. Edward B. Thomas, '70, recently appointed U. S. District Judge by the President, sat at the table with the guests.

The speakers for Yale were Prof. Bernadotte Perrin, '69, whose speech is given elsewhere; Col. Norris G. Osborn, '80, and John K. Clark, '90, a son of Edward P. Clark, '70, of the *Evening Post*, who was also present at the dinner. The other speakers were: Judge Michael H. Hirschberg of the Supreme Court; Hon. Joseph C. Hendrix, a Trustee of Cornell University, and Francis Lawton, of Brown.

Glee Club Plans.

The Easter trip of the University Glee and Banjo Clubs will commence on Thursday, April 7, the Clubs leaving New York on that date and arriving at Old Point Comfort the next morning. The first concert will be given at the Hygeia Hotel on Saturday evening. The other concerts will be at Washington, on Monday, the 11th of April, and at Scranton and Wilkesbarre, Pa., on the two succeeding evenings.

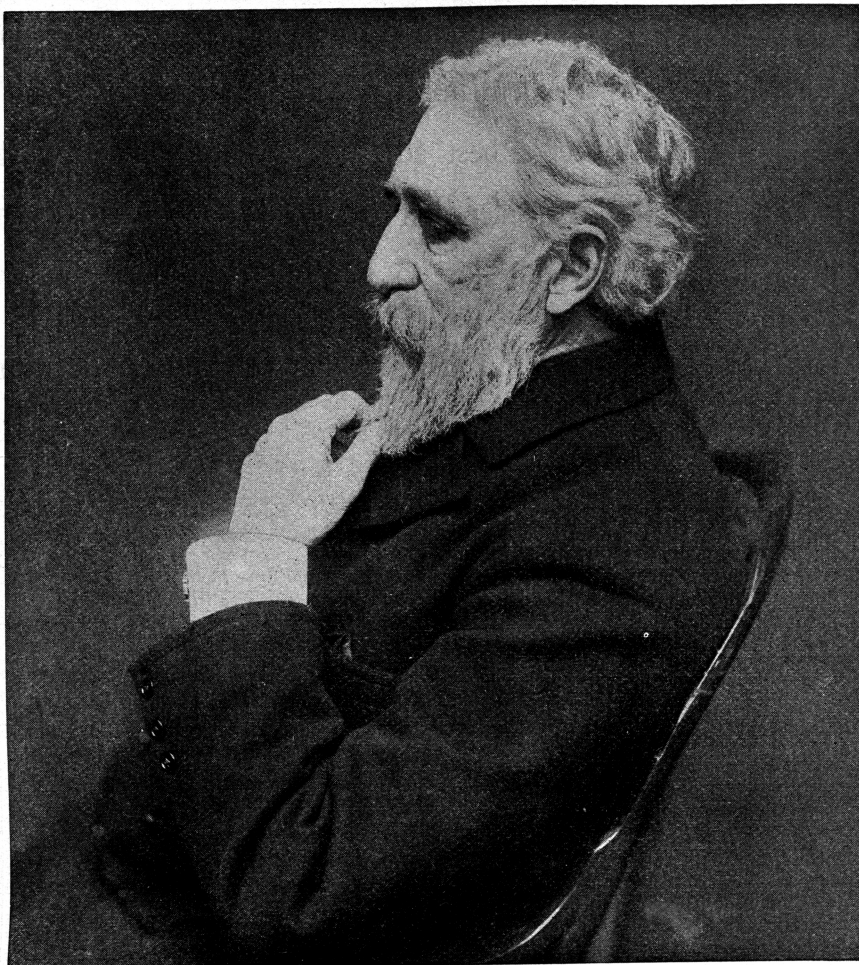
Dr. H. W. Dunning, the Instructor in Semitic Languages, is arranging a bicycle tour through Europe. The party will leave on July 16th and will return about the 15th of September. The party will be joined by Professor Bacon and Mr. Beach.

Great Gift to Columbia.

Columbia University received recently the largest gift in its history, property valued at \$1,100,000. This was the gift of Joseph F. Loubat, sometimes known as the Duc de Loubat (a title conferred by the Pope), a native of New York, though a resident of Paris for fifteen years past. The property consists of real estate on Broadway and Mercer st. The gift is subject to an annuity of \$60,000 during M. Loubat's life.

The Yale Gymnastic team will give an exhibition on March 23d in the gymnasium. This will be a sort of preliminary exhibition to that which the team will give jointly with Princeton on March 26th.

On last Saturday the University hockey team defeated Columbia at the Clermont avenue rink, in Brooklyn. The game was the third with Columbia and decided the series. The score was: Yale, 4; Columbia, 1.



Portrait Copyrighted by Rockwood, 1897.

Warner Library to be Completed this March.

The Special Introductory Price to be Immediately Advanced.

AFTER more than two years of constant labor, the Library of the World's Best Literature, under the editorial direction of Charles Dudley Warner, is nearly finished. Its completion will be a distinct literary event. The special introductory price under the arrangement made by Harper's Weekly Club will positively be withdrawn when the last volumes (which are now on the press) are issued.

Readers will do well to make note of this fact, since by joining the Club now they will obtain the work at nearly one-half the price at which it will hereafter be sold. We have no hesitation in advising our readers to take advantage of this opportunity. We believe the Warner Library is a work of such extraordinary character that it will sooner or later find its way into every home of culture and refinement. The fact that such a marvelous

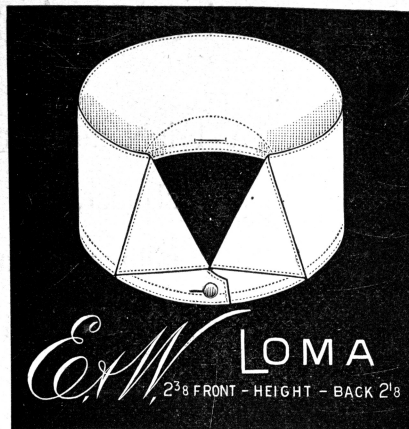
survey of the literature of the world, with the exposition and criticism of the foremost living men of letters, can be had for a sum less than the cost of the simplest collection of single volumes, makes this a work which from the mere standpoint of economy no lover of books can afford to be without.

The Library is not only an immense saving of time and study, but of money as well. A postal card sent to the Harper's Weekly Club, 91 Fifth Avenue, New York, will secure full particulars regarding the favorable terms upon which it is now being offered to Club members. We believe there are few of our readers who will not feel we have done them a special service in calling their attention to this monumental work, and giving timely notice of the withdrawal of the low Club price.

HIGHEST PERFECTION IS REACHED IN THE COLUMBIA CHAINLESS BICYCLE

Price \$125. POPE MANUFACTURING CO. HARTFORD CONN.

CATALOGUE BY MAIL TO ANY ADDRESS FOR ONE 2¢ STAMP OR FREE FROM ANY COLUMBIA DEALER.



"No, boys; I have not been burning the midnight oil to get all that material for my address. I have not spent hundreds for books of reference. I could not have got these up to date facts and figures in that way."

"I simply send to Romeike for Press Clippings."

"Day by day he sent me editorials and original articles collected from thousands of newspapers and periodicals which are read in his offices, and I only had to arrange the material."

ROMEIKE'S Press Cutting Bureau

will send you all newspaper clippings which may appear about you, your friends, or any subject on which you want to be "up to date."

A large force in my New York office reads 650 daily papers and over 2,000 weeklies and magazines; in fact, every paper of importance published in the United States, for 5,000 subscribers, and through the European Bureaus, all the leading papers in the civilized globe.

Clippings found for subscribers are pasted on slips giving name and date of paper, and are mailed day by day.

Write for circulars and terms.

HENRY ROMEIKE,
139 FIFTH AVENUE, NEW YORK.
Branches: London. Paris. Berlin. Sidney.

STORES: PROVIDENCE—PHILADELPHIA

THE Regal

"141" Button Calf,

also made in Patent Calf. We also make this style toe in lace Black Calf Enamel and Russia Calf, double sole; Patent Calf with single sole. Delivered to any address in United States for

\$3.50

and 25 Cents additional express charges.

L. C. Bliss & Co.,
109 Summer St.,
Boston.

Catalogue FREE.

NEW YORK—BUFFALO—CLEVELAND—WASHINGTON—PITTSBURGH—DENVER—WALLA WALLA (Wash.)—UTICA—BALTIMORE—BROOKLYN—ALBANY—DETRUIT—CHICAGO