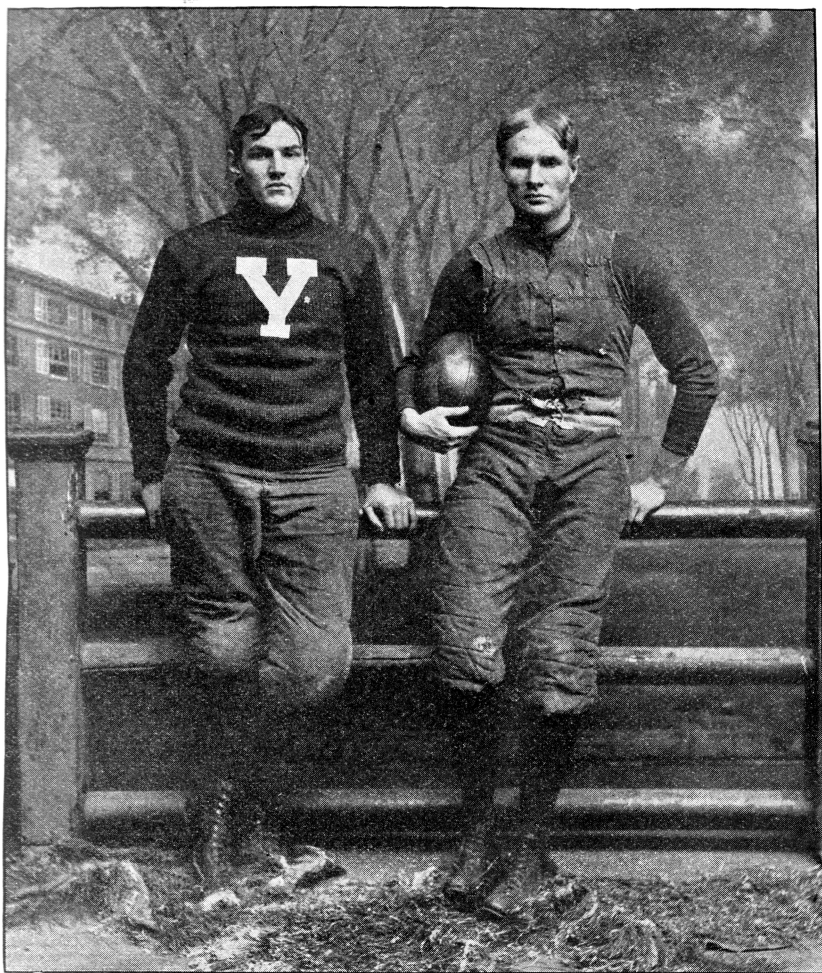


THE TWO YALE CAPTAINS.



B. C. Chamberlin, P. G.

J. O. Rodgers, '98.

FOOTBALL IN THE SCHOOLS.

[Continued from 2d page.]

ought to form a winning eleven. The team was coached by Dr. Henry L. Williams, '91, the old Yale half-back. E. E. Marshall, '99 S., substitute guard on the University eleven this Fall, was graduated from this school.

BROOKLYN LATIN.

The football team representing the Brooklyn Latin School was well developed in simple end and center plays, trying few complicated plays. The more important games resulted as follows: Brooklyn Latin, 0; Brooklyn High, 32; Brooklyn Latin, 0; Brooklyn Poly. Prep., 16; Brooklyn Latin, 10; Dwight, 4; Brooklyn Latin, 10; Cutler, 0; Brooklyn Latin, 10; St. Austin's, 0; Brooklyn Latin, 8; Montclair Military Academy, 10.

The men and positions on the team were: H. Casey, l. e.; W. K. Dodworth, l. t.; F. Oppikofer, l. g.; R. S. Lord, c.; G. U. Van Cleef, r. g.; R. M. Field, r. t.; L. J. Creegan, r. e.; J. F. White, q. b.; G. B. Chadwick, l. h. b.; J. Lane, r. h. b.; B. Hewitt, Captain, f. b.; substitutes, F. B. Gibb, F. Lockwood, H. Allyn, M. C. Ludlam. Of the nine who graduate from the team, four, Dodworth, Oppikofer, Van Cleef and White go into business, Chadwick to Yale, Creegan to Cornell, Field to Massachusetts Institute of Technology, Lord to Williams, Ludlam to Princeton.

The best players were Lane, Creegan, Chadwick and Hewitt. Brewer Hewitt has been elected captain for next year.

BROOKLYN POLYTECHNIC.

The Brooklyn Polytechnic team was weakened by the loss of several of the best players on account of injuries, so that the season was a bad one.

Adelphi was defeated 60 to 0, and Brooklyn Latin, 16 to 0, but Polytechnic went down before St. Paul's (Long Island) 16 to 0, and Brooklyn High, 58 to 0. The line-up was as follows: Commiskey, l. e.; Cowenhoven, l. t.; Bynum, l. g.; Feeley, c.; Dudley, r. g.; Pell, r. t.; Cartin, r. e.; Evans, q.; Parsons, l. h. b.; Dickson, r. h. b.; Byrne, f. b.

The strongest player was Pell. Evans, Parsons and Byrne did good work also. But two of the team graduate, Pell and Parsons, both of whom will enter Princeton next Fall.

UNIVERSITY SCHOOL, CLEVELAND.

The football season of 1898 was considered unsuccessful, as the University School team was beaten in the most important game—that with Central High School. The team won all its other games without being scored on.

An open game with frequent kicks characterized the play. The line-up was: H. S. Sherman, c.; J. H. Wade and D. McGrew, g.; M. B. Weber and R. W. Everett, t.; A. T. Chisholm and M. Ammon, e.; Faxon, q.; H. P. Roby, and R. W. Mitchell, h.; F. E. Perkins, f.

The best playing was done by Wade, Weber and Perkins. Of the seven men who graduate, Perkins, Wade and Sherman will enter Yale. Faxon and Chisholm go to Princeton and Ammon to Cornell. Weber does not go to college.

HILLHOUSE HIGH.

The Hillhouse High School team was rather better this year than their elevens have been in the past. Their last and most important game of the season was won on Thanksgiving Day, from the New Britain High School team, by the score of 28 to 16. The scores of the other games were: Ansonia, 6; Hillhouse, 26; Hartford High, 0; Hillhouse, 26; Meriden Y. M. C. A., 4; Hillhouse, 0; Springfield High, 8; Hillhouse, 6; Waterbury High, 4; Hillhouse, 58; Meriden High, 4; Hillhouse, 70, making a total score of 186 to opponents 26. Great credit for the team's good work is due to the coaches, C. S. Morris, Yale, '96; G. F. Sanford, '97 L. S., and J. A. Hall, '97 S., who developed the team-play in end running, and "guards back" formation.

The team was made up as follows: H. E. Benham, l. e.; J. B. Hart, l. t.; C. Ferris, l. g.; F. M. Adams, c.; A. M. Kaehle, r. g.; W. R. Cowles, r. t.; A. S. Osborn, r. e.; H. E. Morris, Captain, q. b.; H. R. Hart, l. h. b.; H. W. Noyes, r. h. b.; H. C. Beecher, f. b. Of these, Captain Morris, H. R. Hart and C. Ferris, did the best work.

Four players graduate; of these, Morris, H. R. Hart and J. B. Hart, will enter Yale, and Kaehle will not go to college. The outlook for next year is very bright, as all the promising substitutes will be back.

NEW BRITAIN HIGH.

The New Britain High School football team was fully up to their average school team, and played an open game

almost entirely, being coached the entire Fall by H. H. Tomkins, Yale, '99. The more important games resulted as follows: Hillhouse High, 28; New Britain, 16; Hartford High, 5; New Britain, 48; Meriden High, 0; New Britain, 14; Middletown High, 0; New Britain, 16; Wesleyan Scrub, 0; New Britain, 0.

The minor games were won as follows: Trinity Freshmen, 0 to 18; Bridgeport High, 0 to 28, Cheshire Academy, 0 to 38; Hartford High, 0 to 42. This result is very creditable, for a team made up of eight "green" men.

The team was composed of the following players: C. Hunt, l. e.; B. Alling, l. t.; P. Sullivan and W. Stevens, l. g.; G. M. Copley, c.; H. Arens, r. g.; H. Platt, r. t.; T. Judd, r. e.; G. Hubbard, q. b.; A. Griswold, l. h. b.; Wm. Fielding, (Captain for next year), r. h. b.; W. A. Burke, Captain, f. b.; substitutes, H. Parson, H. Tompson and Chas. Merwin. Some of the best work was done by Griswold in end plays, Alling in interference and breaking up interference, Copley at center, Fielding at line bucking and Burke at full-back. Seven of the team graduate. Three, Copley, Alling and Parsons, will enter Yale, and four, Hubbard, Stevens, Griswold and Burke, will go to Dartmouth. The prospects for next year's team are good.

HARTFORD HIGH SCHOOL.

The season was a very unsuccessful one for the football team of the Hartford High School. They were defeated twice by the New Britain High, the score being 44 to 0, and 38 to 5. Hotchkiss defeated them 26 to 0, but the Trinity '99 team was defeated by Hartford High 14 to 0. The line-up was: Marsh, captain and center; Weeks and Costello, guards; Bergen and White, tackles; Hyde and Lincoln, ends; O'Conner, quarter; Allen and Strong, halves; Bush, full.

Weeks, Hyde and Lincoln, filled their positions most acceptably.

Four of the team graduate. Hyde and Lincoln will enter Yale next Fall, and possibly Bergen. Marsh will not go to college.

J. Bush has been elected captain for next year.

MERIDEN HIGH.

The Meriden High School football eleven was not up to the standard of previous teams, being composed of "green" men who for the most part were without ambition and spirit. The play was open, using the "ends and tackles over" to good advantage.

The principal games resulted as follows: Bridgeport High, 0; Meriden High, 46; Hillhouse High, 70; Meriden High, 4. The other games were Hartford High, 12; Meriden High, 16; Middletown, 0; Meriden High, 16; Boardman, 0; Meriden High, 20; New Britain High, 16; Meriden High, 0; Waterbury High, 24; Meriden High, 0; Middletown, 0; Meriden High, 10. The line-up for most of the season was: H. Wilkinson, l. e.; N. Barber, l. t.; D. Atwater, l. g.; R. Flint, c.; J. Chapman, r. g.; H. Hadwin, r. t.; N. Johnson, Captain, r. e.; B. West, q. b.; R. Hyatt, l. h. b.; C. Hewitt, r. h. b.; C. Manwaring, f. b.; substitutes, A. Taylor, Butler, Church, Clark and Hinsdale. The best playing was done by R. Hyatt, N. Barber, captain for next year, B. West and Captain Johnson.

Seven players graduate next Spring. Atwater, Johnson and Hyatt will enter Yale. The others will not attend college.

"A Bunch of Grapes."

"This is the comfortable Fence, Complete, commodious, immense."

A book of verses and drawings by two members of the Senior class made its appearance on Tuesday. Some of the verses have already been published in the *Yale Record*; to these numerous others have been added. The book deals almost exclusively with College life, and has been executed along quite novel lines. It will be placed on sale at Judd's and the Osborn Hall Pharmacy.

The following men have been elected to membership in the University Club: M. B. Bangs, '99; C. F. Doyle, Jr., '99; E. O. Jones, Jr., '99; R. Z. Buchwalter, '99, and J. D. Hawes, '99.

The "TOPEKA" is the new collar that has been added to the class made famous by the "NAKODAS" and the "YOLO." Earl & Wilson's latest has a lock-front band and round-cornered tips. It is a collar of moderate height and pleasing proportions. The Lock-Front band is a special feature in all Earl & Wilson's high-banders, and "Lock-Front" as a trade-mark has been registered. The "BODIE" is Earl & Wilson's standing collar. It is the ideal style for formal dress. With the "NAKODAS" and "YOLO" and the new "TOPEKA" for morning and negligé wear, the "BODIE," "CHICO" and "ARAPAHOE" for formal dress, Earl & Wilson have covered the field perfectly.

J. EDWARD SOMERS,
IMPORTING TAILOR,
63 Center Street,
NEW HAVEN, - CONN.

Junior Prom.

Brown, '99.—Say, Ted, you look out of sight in that Albert Frock Suit. Who made it for you?

Gray, '98.—Bliss & Company, and they are the best in the business.

CHARLES T. PENNELL,
Successor to Wm. Franklin & Co.,
IMPORTING TAILOR,
40 Center St., New Haven, Conn.

PACH BROS.,
COLLEGE PHOTOGRAPHERS,
1024 Chapel St., New Haven.

Branch of No. 935 Broadway, - New York

STORES: PROVIDENCE—PHILADELPHIA

...THE...
Regal
English Winter Russet,



also Black Calf and Titan Calf, double sole, full calf lined, water-proof as a shoe can be made, also made in Calf and Enamel, cloth lined, double sole; Patent Calf with single sole. Delivered to any address in U. S. for

\$3.50

and 25 Cents additional express charges.

L. C. BLISS & CO.,
109 Summer St.
Boston.

Mail Order Dept.

Catalogue
Y
FREE.

NEW YORK — BUFFALO — CLEVELAND — WASHINGTON — PITTSBURG — ALBANY — DETROIT — CHICAGO — BROOKLYN — BALTIMORE — DENVER — WALLA WALLA (Wash.) — UTICA