

THE FOOTBALL WEEK.

An Excellent Spirit of Work and Many Heavy Men

The first hard week of Yale football shows more ground for hope than could have been counted on before the season opened. The question now is, what can be done with a bountiful supply of fairly good, but generally green material. Two facts stick out. One is that the line can be and will be a heavy one. Another is that the team, if the gait is not made too fast early in the season, will be a very lively Yale team.

It is a little early to speak of the style of play, but there is a suspicion that there will be a great deal of kicking. Much on this point depends on the success of Mr. Butterworth in developing material back of the line. Last Monday's practice was largely in this direction. He is giving a great deal of time to punting, the protection of kicks, and the blocking of kicks. His instruction in the latter line has met with some success, as the Wesleyan game shows.

The chances are considerably increased that Mr. Butterworth will be able to carry his coaching through to the end of the season, although this cannot be officially stated. He is much aided in his work here by the presence of Mr. Louis Hinkev, who is devoting his attention particularly to the line. His brother, Mr. Frank Hinkey, will probably not be able to assist for any length of time this Fall.

THE GOOD FEELING.

The best factor in the situation today is the excellent feeling among the candidates and through all the college in support of the captain and coach. This is principally responsible for the spirit which the team shows.

In order to allow this feeling to take practical form, the plan of so-called "scrub games" has been put into operation. At 4.30 each afternoon, that is, at the close of the practice or an ordinary game, the University field and the Freshman field are both given up to elevens from the various classes. These are all under captains and managers appointed by the University Management, and the idea is to bring out anybody who has any ability in, or love for, football, and then develop the best class elevens, and wind up a season of four or five weeks with an inter-class series, with probably class numerals as the rewards of victory. The plan was started Monday and very liberally responded to. The entire scheme is under the direction of Jay C. Mac-Lauchlan, '98, who is the Senior Manager. The Captain of the Senior eleven is R. T. Garrison, '98; of the Juniors, H. T. Bowles, '99; and of the Sophomores, C. Oglebay, 1900. The Manager of the Juniors is S. D. Ames, '99, and of the Sophomores F. D. Cheney, 1900.

THE UNIVERSITY MEETING.

The good feeling will be probably still further increased at the University meeting which takes place as the WEEKLY goes to press. The plan of the meeting includes addresses by all the captains, in which their plans will be frankly talked over before the entire University, whose co-operation will be asked. The athletic men have also invited one or two graduates well known in athletics to reinforce what they say. These graduates were invited to this meeting simply for this purpose, as the whole plan has been originated and carried out by undergraduates. There are a number of men in the Senior class who have made up their minds that the old time unity and spirit of Yale athletics, and the co-operation of graduates and undergraduates, must be restored. This meeting is a feeler in that direction. The purpose is to restore the old principles of athletic success at Yale, and not to follow strange gods. The problem is the adaptation of those principles to the vastly changed conditions of modern Yale.

THE INDIVIDUAL PLAYERS.

It is interesting to pick out the man each week who has done most to make himself a factor in the athletic situation. One would unquestionably choose Ransom, who has been playing at full-back

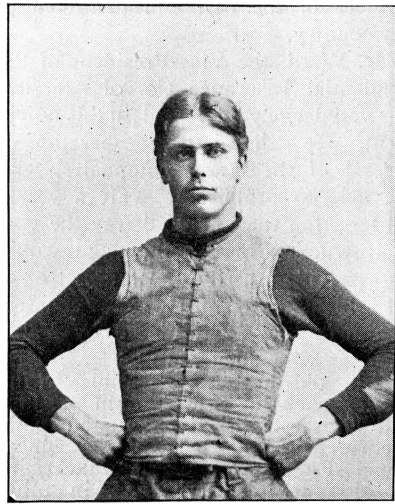
and half-back, but an uncomfortably severe statute forbids one to consider him in this light. He was too good a player when he was in the University of California. He is debarred, not only for this year, but probably for all years for Yale, by the length of his service on the University of California eleven. He is, however, doing a great deal for the Yale eleven by showing how a back ought to play. His running is a combination of the memorable styles of Mr. Laurie Bliss and Mr. Butterworth. He starts with that swift, light canter which Bliss made famous, and when well under way runs with the power of Butterworth. He veers very quickly on a fast run, often slipping a whole bunch of tacklers. He does something with his feet at such a juncture which reminds one of a football player named Thorne.

THE CAPTAIN.

Captain Rodgers is really the man of the week, because he has shown such remarkable ability in convalescence from typhoid fever. He went into the line for the first time Monday afternoon and tore things quite well for an invalid. He seems to feel no ill effects from his first practice.

Allen, Marshall and Post are the other men who have been used as tacklers. All three have promise. Allen, the University oar, has an unlimited amount of sand and zeal. If he can play a quicker game he will be very valuable.

To come in to center, Yale's first impression of Cutten is a good one. He



H. F. BENJAMIN,

Who acted as Captain during Mr. Rodgers illness.

is a theological student weighing 210 lbs., of militant spirit, and a great desire to learn what he doesn't know of the American game, which is almost all of it. His only previous experience has been with Association football. His zealous play has developed in the first two games very slight bruises and he is being handled rather carefully. There has been a good deal of hot weather for hard football, and the thing to fear, from a layman's standpoint, is that the beefy men in the line may be reduced to training weight too fast, and get a tired feeling. Cadwalader has been certainly disposing of the flesh he doesn't need, pretty rapidly. He was at guard at both the Trinity and Wesleyan games. In the former he did some good work; in the latter he did some good work, and more bad work. In Saturday's game with Wesleyan he was very slow in getting away, and didn't lend to that part of the line a stone wall character which people expect in his neighborhood. He does, however, kick goals in the most extraordinary way. He inches up to the ball until within just enough distance to swing his foot from the knee. He then pokes it over with about as much exertion as is required in walking. The ball goes with great power and accuracy.

AT GUARD.

Richard Sheldon is a great quantity of very likely guard material. He is in unusually good condition for him, and his more than 200 lbs. of fairly agile bone and muscle ought to insure a great deal of security and motive power. McGee, a member of last year's Freshman crew, is another candidate for guard. Chadwick, of former Yale elevens, has also played in this position several times. His play can

be extraordinarily good, but he is very erratic. A Freshman named Brown has a very strong frame and an unusually lively way of carrying his great weight. He seems thus far to be able to get through most everybody.

At end Hall has done the most conspicuous work of the week. He will be remembered as a substitute last year. He follows the ball very well, coming down fast under kicks. He is built compactly and, tackling low, is a hard man to escape from. The position of end requires lots of headwork, and he has not this year been tested in serious complications. Dudley is a new end man who has begun favorably, and who did fair work in the Wesleyan game. He is a member of the Freshman class. Warner, who played on the Syracuse University eleven, has been tried recently in practice. Schweppe has been more regularly at this position than any other man except Hall.

Back of the line the field is large. DeSaulles, Stoddard, Ely and Sullivan are competing for the position of quarter, the chances at time of writing favoring the first two. They both play with great amount of dash and spirit. Ely is very light.

For a heavy half-back, the best chance now seems to be Chamberlin, last year's center. His style of play is well liked, and it ought to be safe to say he will be on the eleven somewhere back of the line. One sometimes hears talk on the side lines of trying him for a quarter. This would unquestionably strengthen the Yale defense and Chamberlin is a quick man. Two light running half-backs, who have done good work this last week, are Kiefer, a Freshman from Hill School, and Corwin of the Scientific School, a brother of Prof. Corwin, the old end and captain of the Fall of 1886. Kiefer runs with unusual judgment, making excellent use of his interference. Gilmore has been used for heavy line work with fair success.

For full-back, the most attention is being paid to McBride, a brother of Herbert McBride, '90 S., of both baseball and football talent. He kicks fairly well.

Yale, 10; Trinity 0.

The first game was played on the Wednesday before College opened, at Hartford, against the eleven of Trinity College. There was a good deal of loose play and fumbling and Yale was penalized many times for off-side work. The general impression at Hartford was that Yale was opening up with a good deal of life, showing up very much better than at the same game last Chamberlin directed the play for the second half. The touchdowns were made by Benjamin and Hine, both in the first half. The line-up was as follows:

YALE	TRINITY
Hall, r. e.....l. e.,	Ellis
Allen, r. t.....l. t.,	Ingalls
Sheldon, r. g.....l. g.,	Bacon
McGee, r. g.	McGee, r. g.
Cutten, c.....c.,	Lord
Chadwick, l. g.....r. g.,	Johnson
Marshall, l. t.....r. t.,	Blakeslee
Schweppe, l. e.....r. e.,	Rich
Walker, l. e.	Walker, l. e.
Ely, q. b.....q. b.,	Sturtevant
Stoddard, q. b.	Stoddard, q. b.
Benjamin, r. h. b.....l. h. b.,	Woodle
(capt.)	(capt.)
Hine, r. h. b.	Hine, r. h. b.
Gilmore, l. h. b.....r. h. b.,	Bellamy
Corwin, l. h. b.	Corwin, l. h. b.
McBride, f. b.....f. b.,	Littell
Chamberlin, f. b.....f. b.,	Arundel

Yale, 30; Wesleyan, 0.

The second game on Saturday at New Haven with Wesleyan improved the feelings of Yale very much. There was not so much ground for encouragement as the score would show, because Wesleyan was not beaten down badly until the second half, when her captain had retired for an injury and her backs had begun to fumble. Besides this a good deal of Yale's advance in the second half was due to Ransom, whose running and kicking was a remarkable feature of the contest. He used generally a long, low kick, which was very difficult to handle. The first touchdown for Yale was made after eleven minutes of play. The rest of the scoring was done in the second half. Kiefer did some very pretty running for Yale and in the second half Corwin took up the good work where he left it off. The most conspicuous individual play was by Hall at end. Touchdowns were made by Gilmore,

ALREADY A STRONG TRADITION

Yale is a place full of tradition. Traditions not only govern the conduct of Freshmen, the relation of classes and the status of institutions, but also the business dealings of the new comer. They direct him where to go for the necessities and the luxuries of life.

Some of these traditions become strongly entrenched in a few years, and there is generally a very good reason for it. We think if you will communicate with our store by a personal call or by correspondence, you will see why the tradition has become so strong in a few years among Yale men to get their furnishings of

CHASE & CO.,

NEW HAVEN HOUSE BLOCK.

Hall, Post, Corwin and Ransom. The line-up follows:—

WESLEYAN	YALE
Archer Young (capt.), r. e. l. e.,	Dudley
Williams, r. t.....l. t.,	Post
Sibly, r. g.....l. g.,	Cadwalader
Bartlett, c.....c.,	Cutten
Townsend, l. g.....r. g.,	McGee
r. g.,	Brown
Henry, l. t.....r. t.,	Allen
A. Young, l. e.....r. e.,	Hall
Davison, q. b.....q. b.,	DeSaulles
q. b.,	Ely
Dodd, r. h. b.....l. h. b.,	Kiefer
l. h. b.,	Corwin
Raymond, l. h. b.....r. h. b.,	Gilmore
r. h. b.,	Ransom
Wing, f. b.....f. b.,	McBride
f. b.,	Chamberlin

Athletic Calendar.

- Saturday, October 9.—Williams at New Haven.
- Saturday, October 16.—Newton A. C. at Newton.
- Wednesday, October 20.—Brown at New Haven.
- Saturday, October 23.—Carlisle at New York.
- Saturday, October 30.—West Point at West Point.
- Saturday, November 6.—Chicago A. A. at New Haven.
- Saturday, November 13.—Harvard at Cambridge.
- Saturday, November 20.—Princeton at New Haven.

Freshman Football Elections.

The Freshman football officers were elected on Monday evening, the 4th, during a meeting of the Class called for that purpose in Osborn Hall. The men elected were: President, W. T. Townsend; Vice-President, R. Townsend; Secretary and Treasurer, A. P. Berger. Julian Mason presided at the meeting and the Class was addressed by Captains Rodgers, Perkins and Whitney, with the aim of arousing a spirit of enthusiasm among their hearers in athletics.

Freshman Football.

Arthur S. Goodwin, 1900, who cannot play football this year on account of a recent illness, will coach the Freshmen candidates. The following men from 1900 S. and 1901 presented themselves as candidates for the various positions on Saturday afternoon:—

- Full-back—Olcott, Russ, Noyes, Bel-ding, Twitchell, H. P. Shaw.
- Half-backs—Sharkey, McCord, Reynolds, Hoysradt, McCurdy, Draper, Yaggy, McLane, White.
- Quarter-back—Wallace, White, Snit-ger, P. Cheney, Hord, W. B. Hubbard, Reynolds.
- Ends—Crosthvart, Parshall, Ives, L. E. Hemenway, F. W. Brooks, D. H. Morton, A. D. Parker, A. Keep, Crosthwaite, Wear.
- Tackles—Hawkins, Newport, W. B. Allen, J. Bayne, A. W. Judd, H. P. Judd.
- Guards—R. B. Dixon, T. L. Montague.
- Center—P. Thompson.