

[Continued from 4th page.]

which he received the degree of M. A. in 1894. In 1895, he was graduated from the Yale Medical School. He received the Campbell Gold Medal given to the student ranking first in his class. In the Fall of that year he was appointed assistant in pathology and bacteriology. During the Spring and Summer of this year he pursued studies in pathological work in the hospital of Boston and returning in the Fall, became instructor in the subject in which he had been assistant the year before.



JAMES W. D. INGERSOLL.

HERBERT DEWITT CARRINGTON.

Herbert DeWitt Carrington, who was made an instructor in German in the Scientific School, was also a graduate of that school, Class of Eighty-Four. From 1889 to 1892 he was instructor in German there and since then has been studying in Germany.

CHARLES C. CLARKE, JR.

Charles C. Clarke, Jr., who has been appointed instructor in French in the Scientific School, was graduated from Yale in the Class of Eighty-Three and has for some time been studying in Paris.

OTHER CHANGES IN THE TEACHING FORCE.

Prof. Thomas R. Lounsbury, as has been previously announced, is to be absent from the Sheffield Scientific School the coming year. He is now on a leave of absence and is traveling abroad. Assistant Professor Cross will conduct Professor Lounsbury's classes and his own former work will be carried on by James W. Broatch, '91.

Jay G. Eldridge of the Class of Ninety-six will become an instructor in German in the Scientific School this Fall.

F. B. Luquiens, '97, son of Prof. Jules Luquiens, will become an instructor in French in the Scientific School for the coming year.

PROF. CLARK'S ABSENCE.

Prof. John E. Clark, M. A., of the Sheffield Scientific School, owing to a slight illness, will not resume his duties in the Scientific School this Fall, but will be absent on a short leave of absence.

Yale Schedule.

The following is the football schedule as far as arranged:

Wednesday, September 29.—Trinity at Hartford.

Saturday, October 2.—Wesleyan at New Haven.

Wednesday, October 6.—Amherst at New Haven.

Saturday, October 9.—Williams at New Haven.

Wednesday, October 13.—

Saturday, October 16.—Newton A. C. at Newton.

Wednesday, October 20.—Brown at New Haven.

Saturday, October 23.—Carlisle at New York.

Wednesday, October 27.—

Saturday, October 30.—West Point at West Point.

Wednesday, November 3.—

Saturday, November 6.—Chicago A. A. at New Haven.

Wednesday, November 10.—

Saturday, November 13.—Harvard at Cambridge.

Wednesday, November 17.—

Saturday, November 20.—Princeton at New Haven.

The New York Yale Club.

The Yale Club of New York has at this time between six and seven hundred members, with every prospect of a considerable increase as soon as it is in fair working order. The house No. 17 East 26th street is admirably suited to the purposes of the Club. It is a twenty-six foot house, three rooms deep. It has a basement and four stories. The house will provide a sufficiently large dining-room, two sitting-rooms, a billiard-room, a library, a writing-room, several sleeping-rooms on the upper floor, and servants' quarters. The two large rooms on the first floor can be thrown into one, and in this the general meetings of the Club will be held.

As is well known, the particular aim and object of the Club is to provide for the wants of the younger Yale graduates in New York City, and to that end the admission fees and dues have been kept at a very low figure, and every inducement will be offered to the younger men to join. There will be sleeping-rooms provided in the house for the accommodation of out of town members, but of course the number will be necessarily limited.

For a Portrait of Professor Brush.

In connection with the arrangements for the semi-centennial celebration of the Sheffield Scientific School, October 28, the graduates of the School are invited to contribute for an oil portrait of Professor George J. Brush, Director of the School. The committee in charge are the following: W. W. Skiddy, '65; J. A. Macdonald, '66; A. B. Hill, '69; T. G. Bennett, '70; Henry B. Sargent, '71; J. L. Houghteling, '76; E. L. Ryerson, '76; F. L. Bigelow, '81; A. F. Kountze, '91; Edward Van Ingen, '91.

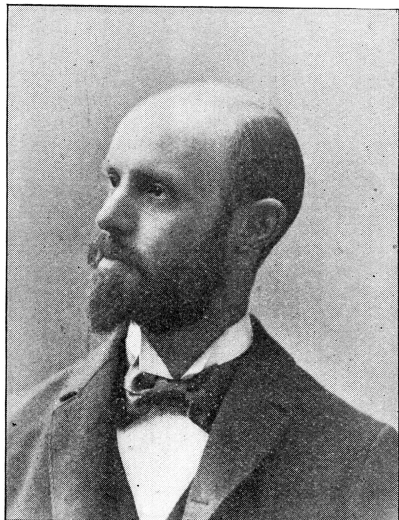
The program for October 28 is as follows: 10 A. M., alumni meeting at North Sheffield Hall; 3 P. M., address by President D. C. Gilman of Johns Hopkins University; 4:30 P. M., reception in Winchester Hall.

Mr. Locke to Instruct in Chemistry.

James Locke becomes an instructor this year in chemistry in the Scientific School this Fall. Mr. Locke was graduated in the class of 1890. He studied in Germany from 1892 till 1896, receiving the degree of Ph.D.

College Street Hall.

The work of removing the steeple of College Street Hall, which was formerly known as College Street Church, was completed last week. No other changes will be made in the building, for the present. The building has been used principally by the Musical Department.



DR. C. J. BARTLETT.

Tournament at New Haven.

The Intercollegiate Tennis Association has decided to play the Fall tournament on the grounds of the New Haven Lawn Tennis Association as usual. An attempt was made to take games to the University of Pennsylvania grounds, but it was not successful. The tournament opens Tuesday, October 5, and the entries close on the previous Saturday.

MANHATTAN TRUST COMPANY

CAPITAL, \$1,000,000.
Corner of Wall and Nassau Streets.
A Legal Depository for Court and Trust Funds and General Deposits.
Liberal Rates of Interest paid on Balances.
John I. Waterbury, President.
John Kean, Amos T. French, Vice-Pres'ts.
Chas. H. Smith, Sec. W. Pierson Hamilton, Tr.
Thomas L. Greene, Auditor.

DIRECTORS:
August Belmont. John Kean, Jr.
H. W. Cannon. John Howard Latham.
A. J. Cassatt. John G. Moore.
R. J. Cross. E. D. Randolph.
Rudolph Ells. James O. Sheldon.
Amos T. French. Samuel Thomas.
John N. A. Griswold. Edward Tuck.
W. Pierson Hamilton. John I. Waterbury.
H. L. Higginson. R. T. Wilson.

LEOPOLD H. FRANCKE. ALBERT FRANCKE,
Yale '89. Yale '91 S.

L. H. & A. FRANCKE,
BANKERS AND BROKERS.

50 Exchange Place, - - New York.
Members New York Stock Exchange.
Buy and Sell on Commission Stocks and Bonds dealt in at the New York Stock Exchange. Also Miscellaneous Securities not listed on the Stock Exchange.
Long Distance Telephone, 1348 Broad.

HOME
Life Insurance Co.
OF NEW YORK.

GEORGE E. IDE, President.

WM. M. ST. JOHN, Vice President.

ELLIS W. GLADWIN, Secretary.

WM. A. MARSHALL, Actuary.

F. W. CHAPIN, Med. Director.

EUGENE A. CALLAHAN,
General Agent

STATE OF CONNECTICUT.

23 Church Street, - - New Haven.

THE
MASSACHUSETTS MUTUAL
LIFE INSURANCE COMPANY,

SPRINGFIELD, MASS.

Incorporated 1851.

JOHN A. HALL, Pres. H. M. PHILLIPS, Sec.

Guaranteed Paid-Up and Cash Surrender Values Endorsed on every Policy.

Send your name, date of birth and address to the Company's office, and there will be shown you a specimen policy with the paid-up and cash surrender values which would appear in a policy issued at your age.

All Policies protected by the Massachusetts Non-Forfeiture Law.

"The Leading Fire Insurance Company of America."



WM. B. CLARK, President.

W. H. KING, Secretary.

WESTERN BRANCH,
413 Vine Street, Cincinnati, O.
NORTHWESTERN BRANCH,
Omaha, Neb.
PACIFIC BRANCH,
San Francisco, Cal.
INLAND MARINE DEPARTMENT,

CHAS. ADAMS. ALEX. MCNEILL. WM. S. BRIGHAM.
Yale '87. Yale '87.

ADAMS, MCNEILL & BRIGHAM,
BANKERS AND BROKERS,
44 Broad Street, - New York.
Members New York Stock Exchange. Stocks and Bonds Bought and Sold. Investment Securities a Specialty.
"Long Distance Telephone, 947 Broad."

SCHOOLS.

DWIGHT SCHOOL.

15 West 43d St., near Fifth Av., New York.
The Yale preparatory School of New York. Its graduates have been admitted with high credit to Yale College and Sheffield. Eighteenth Annual Catalogue on application.
Arthur Williams (Yale '77), Principal.
Henry L. Rupert, M.A., Registrar.

DRISLER SCHOOL,

FRANK DRISLER, A.M., Principal.
No. 9 East 49th Street, New York City.
A select school for a limited number of pupils. Resident pupils received.

THE CUTLER SCHOOL,

No. 20 E. 50TH ST., NEW YORK CITY.
One hundred and ninety-three pupils have been prepared for College and Scientific Schools since 1876, and most of these have entered YALE, HARVARD, COLUMBIA or PRINCETON.

WOODBRIIDGE SCHOOL,

417 MADISON AVENUE,
NEW YORK CITY . . .
Special attention given to preparation for the Sheffield Scientific School.
Circulars on application.

MRS. AND MISS CADY'S

BOARDING AND DAY SCHOOL FOR GIRLS.
56 Hillhouse Avenue, New Haven.
Primary, Intermediate and Finishing Courses of Study, and College Preparatory. Certificate admits to College. Circulars sent on application. Number in family limited.

Md., Baltimore; Carey & Lanvale Sts.

Shaftesbury COLLEGE of EXPRESSION.

MISS ALICE MAY YOUSE, President.
Illustrated Catalogue. Full season, Winter or Summer. Winter, November to April inclusive; Summer, May to Oct. inclusive.

PICTURES FOR . . .
DECORATING YOUR STUDIES.

AUGUR'S, 127 Church St., is the place to find them; also to have your pictures framed. Fine Stationery and Card Engraving. Next to Public Library. Be sure you find his shopping place.

Incorporated 1819. Charter Perpetual.
Cash Capital, \$4,000,000.00
Cash Assets, 11,431,184.21
Total Liabilities, 3,581,196.16
Net Surplus, 3,849,988.05
Losses Paid in 79 Years, 79,198,979.38

E. O. WEEKS, Vice-Pres.

A. C. ADAMS, Ass't Sec'y.
HENRY E. REES, Ass't Sec'y.

{ KEELER & GALLAGHER,
General Agents.
{ WM. H. WYMAN, General Agent.
{ W. P. HARTFORD, Assistant General Agent.
{ BOARDMAN & SPENCER,
General Agents.
{ CHICAGO, ILLS., 145 LaSalle Street.
{ NEW YORK, 52 William Street.