

**THE MEDICAL SCHOOL.**

**Advantages of Longer Course—Success of the Change.**

Last Spring it was decided to lengthen the course in the Medical School, necessary for the degree of M. D. from three to four years. That this was a wise measure has been clearly proven by the work this year. The number of the students has increased from one hundred and twenty-five to one hundred and thirty-eight, a gain of over ten per cent. The benefits which will result from the change are in brief as follows: It gives the opportunity to increase the instruction in laboratory Pathology, especially in Bacteriology, in which branch there will be a required course the second year. It will also permit further development in the laboratory course in Clinical Chemistry required the third year.

The greatest advantage to be gained by the change is the increased amount of work it allows in Chemical courses of the fourth year and particularly in the specialties. As the changes will affect but the latter part of the course, and as eight students who had had previous instruction were placed in the class of 1899 which otherwise would have been vacant, there was no difficulty in arranging the curriculum.

It has been decided to admit graduates of the Academical and Sheffield Departments who have completed the required course in Biology into the second year class, with certain conditions in certain branches in which the Biological course is not an equivalent to the first year of the Medical course.

**Professor Josiah Willard Gibbs.**

Professor Josiah Willard Gibbs, who has just been made a member of the Royal Society of London, is the son of Dr. Josiah W. Gibbs, Professor of Sacred Literature in the Theological Department of Yale College, and was born in New Haven, February 11, 1839. He prepared for college at the Hopkins Grammar School, entering Yale in 1854. He graduated in the class of '58, and received the degree of Doctor of Philosophy in 1863. In 1866 he went abroad and spent three years in study at Paris,

Berlin and Heidelberg. In 1871 he was appointed University Professor of Mathematical Physics. His studies have been mostly in the field of Thermodynamics and at different times he wrote articles for the Connecticut Academy of Transactions, and it is mainly on account of these very valuable writings that Professor Gibbs has just been elected a member of the Royal Society of London. In 1893 the degree of L.L. D. was conferred upon him by Williams College. Professor Gibbs is a member of the National Academy of Science, the Cambridge Philosophical Society, the London Mathematical Society, the Koenigliche Gesellschaft der Wissenschaften of Goettingen, the Royal Academy of Amsterdam, and the Societe Hollandaise de Science.

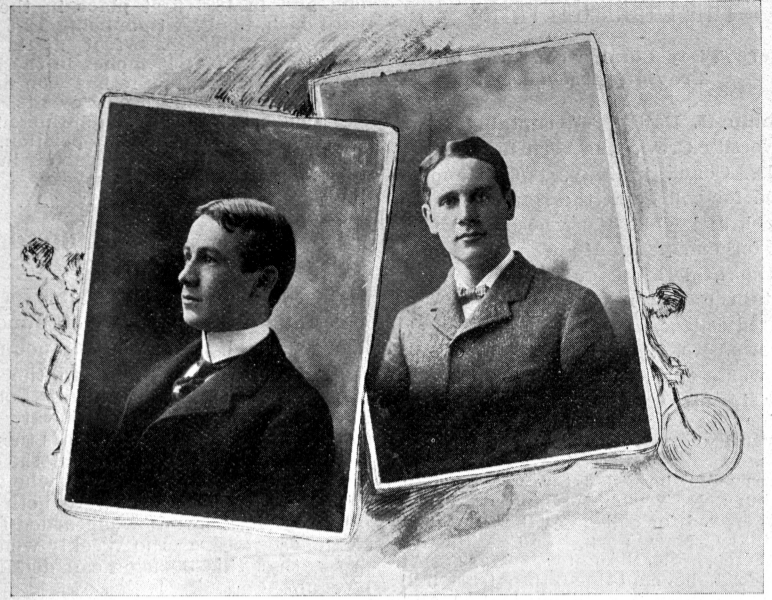
**Strength Tests.**

Considerable interest has been taken recently at Harvard and Yale in testing human strength by means of a machine. Lovering, of Harvard, made a record of 1,623 kilos about two months ago, which for a time was the best on record. Within two weeks C. S. Verrill, '99 S., made the same attempt in the Yale gymnasium and came within a few points of the Harvard man's record. The machine was then not in very good working order. When the deficiencies had been remedied, C. Chadwick, '97, made the record of 1,638 kilos. This record only stood as the best test until C. S. Verrill made a second attempt last Tuesday, April 13, and scored 1,676 kilos. The way in which the three men differ in the distribution of their strength is shown by the following comparison:

	Verrill.	Chadwick.	Lovering.
Strength of legs.....	803	843	665
Strength of back.....	349	279	410
Strength of chest and upper arms.....	332	305	383
Strength of right grip	101	113	85
Strength of left grip.	91	98	80
Totals.....	1676	1638	1623

**Glee and Banjo Clubs.**

The following men will go on the Southern trip of the Glee and Banjo Clubs:



F. P. GARVAN '97. E. HILL, JR., '97.

**BANJO CLUB.**

Banjourines—L. G. Fisher, '97; J. E. Shaw, '97 S.; S. R. Kennedy, '98; G. R. Holden, '97; C. A. Neergaard, '97; and Leeds Mitchell, '99 S.

Banjos—A. J. Draper, '97; and J. H. Porter, '97 S.

Piccolo—L. L. Kountze, '97.

Guitars—H. D. Kountze, '97; W. B. Ford, L. S.; J. B. Tytus, '97; J. V. Miller, '97; and W. F. Dominick, '98.

Mandolins—M. T. Clark, '97 S.; R. P. Loomis, '99; and C. C. Conway, '99 S.

Mandola—F. J. Tytus, '98 S.

**GLEE CLUB.**

First tenors—E. C. Stalter, P. G.; W. J. Lapham, '97; G. G. Schreiber, '98; M. J. Dodge, '98; D. H. Gillespie, '98; A. J. Baker, 1900.

Second tenors—P. Hinkle, '97; W. Keeler, '97; M. Yung, '98 S.; H. Butler, '98; C. F. Parker, '98 S.; L. H. Voorheis, '97 S.

First basses—H. W. Carey, '97; H. C. Jackson, P. G.; F. Sheehan, '98; J. W. Wadsworth, '98; G. Parker, '98; H. Cheney, '99.

Second basses—G. B. Taylor, '97; T. F. Russell, '97; J. McLaughlin, '98, and H. W. Wilson, '98.

**Contents of April "Lit."**

The April Lit., the first number under the '98 Board, appeared April 12, with the following contents: "The Scholar," by F. A. Lord, '98; "The Land Mark," poem, by F. G. Hinsdale, '98; "Three Women," by G. B. Clark, 1900; "The Woodcutter's Road," poem, by H. Mason, '97; "The Reprise of Claveroche," by E. C. Streeter, '98; "Separation," poem, by H. A. Callahan, '99, and "The Consequences of Teddy," by D. DeF. Burrell, '98. Contributors to the portfolio are A. C. Harrison, '98; T. D. Newmeyer, '99; R. Hooker, '99; H. C. Robbins, '99, and the editors.

**Athletic Calendar.**

April 15—Yale vs. Georgetown University at Georgetown.

April 16—Yale vs. Hampton at Hampton.

April 17—Yale 1900 vs. St. Pauls at Garden City.

April 17—Yale vs. University of Virginia at Charlottesville.

April 19—Yale vs. University of Virginia at Lynchburg.

April 20—Yale vs. University of North Carolina at Danville.

April 21—Yale 1900 vs. Amherst 1900 at Amherst.

**THE CONNECTICUT GENERAL LIFE INSURANCE CO.,  
OF HARTFORD, CONN.**

ASSETS, JANUARY 1st, 1897,	-	-	-	-	-	-	\$2,994,747.97
LIABILITIES, " " "	-	-	-	-	-	-	2,455,885.62
SURPLUS, " " "	-	-	-	-	-	-	538,862.35

Issues all forms of Life and Endowment Policies with Guaranteed Cash, Paid Up, and Extended Insurance Values.

Its Interest Receipts and Rents have for years more than paid its Death Losses.

**T. W. RUSSELL, President.**

**F. V. HUDSON, Secretary.**

**E. B. PECK, Ass't Secretary.**

**R. W. HUNTINGTON, Jr., Actuary.**

For information regarding our definite contracts, apply to the Home Office or to

**H. W. ALLEN, General Agent,**

**Room 10, Hubinger Building,**

**NEW HAVEN.**