

month earlier in the season than was the case last year. The first crew began to row in the '94 racing shell about two weeks ago, while the second crew is still practicing in a new barge built this year, which is nearly as fast as a shell. The second crew has been kept in training longer than usual this year, and will not be discharged until the class crews commence to train.

The order and weights of the first crew, as now rowing, are as follows: Stroke, J. H. Simpson, '97, of St. Paul, Minn., 163 lbs.; No. 7, G. Langford, '97S., of St. Paul, Minn., 174 lbs.; No. 6, P. Whitney, '98, of New York city, 172 lbs.; No. 5, P. H. Bailey, '97, of Windsor Locks, Conn., 181 lbs.; No. 4, S. Patterson, '97, of Chicago, Ill., 172 lbs.; No. 3, H. G. Campbell, jr., '97, of Paterson, N. J., 171 lbs.; No. 2, P. D. Mills, '97S., of West Point, N. Y., 170 lbs.; bow, D. F. Rogers, '98, of Stamford, Conn., 165 lbs. The second crew has the following make-up: Stroke, Hewitt; No. 7, Griswold; No. 6, Parkhurst; No. 5, Abbott; No. 4, Marsh; No. 3, Marvin; No. 2, Hitchcock; bow, McLaughlin. The training table includes all the first crew and Nos. 7, 6 and 4 of the second crew.

ONLY THREE PLACES.

It is practically certain that Nos. 8, 7 and 5 of the first crew will remain in their positions during the remainder of the season. These three men were on the Henley crew of last year, where the positions, however, were not the same. Simpson was captain and stroke of the '97 Freshman crew and was a substitute on the University crew, the following year. He is of about the right weight and has the dash requisite for a stroke. Langford has stroked two University crews, but has this year been moved back to No. 7, for which his weight better fits him. Bailey (Captain) rowed No. 3 in the '97 Freshman crew, and was substitute on last year's University crew. He rowed No. 5 at the Henley last year.

The remaining positions in the boat are subject to considerable change, and some of them may eventually be filled by men now rowing in the second boat. Whitney is too light for No. 6. Herowed this same position on the '98 Freshman crew and was a substitute on the University crew last year. He may be moved to a position nearer the bow and his place would then be filled by a heavier man from the Freshman crew, of which the material is very good, although rather green and undeveloped as yet. Patterson, at No. 4, was a substitute on his Freshman crew. His position is by no means certain. Neither is that of Campbell at No. 3, and Mills, at No. 2. Either one of these might be displaced by the removal of Whitney to the front part of the boat. Campbell is rather tall for his position. Marsh also may come in for one of these disputed positions. Rogers, who stroked the '98 Freshman crew, is being pushed hard for his position by McLaughlin. The contest between these two men has been very close, but at present the balance seems to be in favor of Rogers.

In general it may be said that in form and watermanship the crew is as far advanced as crews usually are at this time of the year. What is most needed is increased strength and more "beef" in the boat. This point is well shown by the results of trial pulls with the Freshmen over distances not exceeding one mile. Last Monday the times of the two crews were very nearly the same, and the University men were rowing in a much better boat.

The Baseball Work.

The base ball candidates started training, February 23. At that time, the squad numbered forty-four men and the work consisted of daily practice in the cage. On March 11, the candidates went to the Field, where they have been ever since. At present, the number of men is eighteen. The nine was able to use the Field this year unusually early. The general form of all the men has been fair for so early in the season. In the two first games played, the fielding was excellent. The Wesleyan game was errorless. The New York game did not make as favorable an impression.

The training was not differed much from that of previous years. A slight change was made in the work at the cage, by making the practice as nearly like that at the Field as possible. The coaches have been G. B. Case, '94; W. F. Carter, '95; M. H. Beale, '93S.; J. R. Quinby, '95 S., and T. S. Arbutnot, '94. In the games played so far, the policy has been to try the new material so far as possible. Great interest is being shown in the team this year by the University. At both the games played at the Field, the attendance was large. This is thought to be caused partly by the renewal of

athletic relations with Harvard and partly from the fact that an unusual number of important games are scheduled to be played in New Haven this year.

CANDIDATES FOR PITCHER.

Since the candidates have been practicing at the Field and have even played a few games, it is possible to gain some idea of what new material is on hand, and of how the old men are playing. In the games so far played the position of pitcher has been filled by F. C. Hecker, '99; H. B. Wallace, '99, and M. L. Fearey, '98. The former comes from Noroton, Conn., and will be remembered as a substitute pitcher on the Nine last year. He was considered a very good man for a Freshman, and high hopes have been entertained that he may eventually develop into a first-class pitcher.

Wallace played on his Freshman nine last year where he left a good record. He has a left-handed delivery and plays in steady form. His work in the first inning of the New York game, last Saturday, was, however, quite disappointing. His home is St. Louis.

Fearey comes from Albany, N. Y. He played on his class team last year and showed up well, but has been rather erratic this season, though his work against the "Giants" was excellent. He has more speed than any of the other pitchers, but is apt to be wild.

J. C. Greenway, '98S., of Hot Springs, Kan., has been playing left field in the games so far, a position which he covers in unexceptionable form. He will be Yale's main stay in the box later in the season. His merits as a pitcher became well known last Spring. He is being saved now and in the meanwhile the new material is being given a chance.

BEHIND THE BAT.

H. L. de Forest, '97, of New York City, has played behind the bat in all the games so far. He has made several very difficult stops and his throwing has been very good. He was the catcher on his class team, where he made a very good record. He seems at present to be the best man in the field.

A. S. Goodwin, 1900, of Brooklyn, N. Y., who played foot ball last Fall, came from Andover with a good reputation as a catcher. His practice in the cage showed him an excellent ball player, but doctor's orders, the result of suspicions of heart difficulty, have taken him from the squad. Thus the Nine is deprived of a very promising candidate for a new position.

F. T. Murphy, '97, of Junction City, Kan., caught in the last games of the season last year. He is far and away the best man behind the bat, now in College, but has not been able to appear on the Field this year. His class room work is very confining, and his position as Business Manager of the News takes much of his time. His eyes troubled him in base ball work last year, also. While all these reasons and others make his enlistment in the service this Spring seem well-nigh impossible, an anxious college still hopes to see him able to put on a uniform.

First base will be covered this year by H. W. Letton, '97S., of Chicago, Ill., unless something very unexpected happens. He played this position last year with great success, and is regarded as one of the steady men on the nine this year. J. W. Wadsworth, jr., '98, of Geneseo, N. Y., who played first base on his Freshman team has been used as a substitute this year. He is a competent man to take Letton's place, if it should ever be necessary.

Second base seems to be in the hands of E. F. Hamlin, '98 M.S., who comes from Plantsville, Conn., and played on the Freshman team last year. His fielding so far has been very clean and sharp. He is also an excellent batter. C. A. H. de Saullés, of Bethlehem, Pa., who played this position last year, has not yet been able to join the squad.

C. M. Reed, '97, of Stamford, Conn., and S. B. Camp, 1900, of West Winsted, Conn., are the leading candidates for short stop. The former played centerfield on his Freshman team and has kept up his ball playing all through college. His fielding is steady and clean, but his throw to first is a little weak. Camp has been doing very well indeed for a new man, but has not had sufficient time yet to show just what his capabilities are. He is a quicker man than Reed.

C. M. Fincke, '97, of Brooklyn, N. Y., is playing at third base. He played this position two years ago part of the season. His work this year is better than ever before and he has improved somewhat in his batting.

THE OUTFIELD.

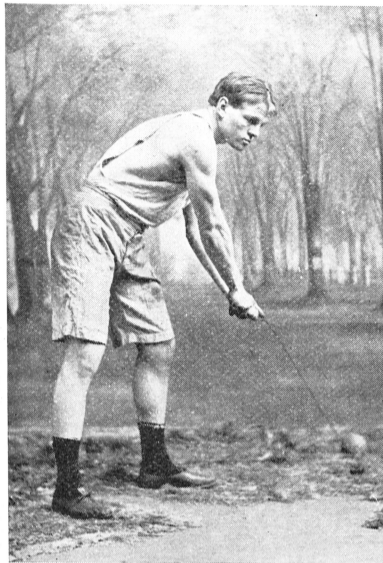
In the outfield H. M. Keator, '97 of Roxbury, N. Y., who played right field during the last three years, has moved to center, where as Captain he will be able to control his men better. Greenway has been playing in left

field, which position he filled last year when he was not pitching. The position of right field has been filled by J. W. Wear, '99 of St. Louis, Mo., and E. Atkin, '99 of New York City, both of whom played on their Freshman team last year. C. G. Bartlett, jr., '99, of Black Hall, Conn., and G. S. Chauncey, '98S. of Brooklyn, N. Y., have also been tried at positions in the out field, and if Greenway goes in as pitcher his position will undoubtedly be filled by one of these. The outfield should in any case be strong.

The new material is in general considered to be very promising. Several new positions are to be filled, but in view of the early start it is hoped that a good nine will be developed. The men who are to play on the Easter trip are:

THE PRESENT SQUAD.

The base ball squad was reduced on Monday, April 12, and now consists of the following men: H. W. Letton, '97 S.; E. F. Hamlin, M. S.; S. B. Camp,



CHARLES CHADWICK, '97.

1900; C. M. Reed, '97; C. M. Fincke, '97; G. C. Greenway, '98 S.; J. W. Wear, '99; M. L. Fearey, '98; H. B. Wallace, '99; F. Hecker, '99; C. G. Bartlett, '99; H. L. deForest, '97; J. J. Hazen, '98; G. Hecker, '99; G. S. Chauncey, '98 S.; E. Atkin, '99; and H. M. Keator, '97. Of these the following men will go on the Easter trip, and have received suits: Letton, Hamlin, Camp, Reed, Fincke, Greenway, Wear, Fearey, Wallace, F. Hecker, Bartlett, deForest and Keator. The nine left New Haven Wednesday morning for New York at 9:35. The game scheduled for that afternoon was with Manhattan College in New York City.

Work on the Track.

The candidates for the track team were called out for work in the gymnasium, January 21, two weeks earlier than last year. The number of candidates has been so unusually large, that an important change has been necessary in the method of selecting the team. Successive trials are held in which, to qualify, the candidate must perform his event within a certain time or distance limit,

You found about what you wanted with us while you were in New Haven. We have just as good things and better now. And you can get them, wherever you are. A great many of your classmates do. We might mention a lot of good names, but you know who our customers were.

Well, if you want a string tie or a wedding outfit, a collar button, a dressing sack, a blanket wrap or a dress suit case, drop us a line. We have, by the way, something mighty pretty in colored shirtings for the spring and summer. You know our address:—

CHASE & CO.,
New Haven House Building.

which is made more exacting as the season advances. The policy has also been to keep on as many men as possible in order to have well trained material next year. The outdoor practice began March 29. Another new plan was the establishing of a training table the first of March, for the quarter-milers, who compose the relay team. The results of this change have proved highly satisfactory as the relay team defeated both Princeton and the University of Pennsylvania. The regular training table will start April 14 and men who will be taken are S. K. Gerard, R. C. Merwin, C. C. Van Winkle, E. C. Perkins, J. H. Thompson, P. Van Ingen, C. Chadwick, D. Buckingham, R. W. Burnet, T. R. Fisher, W. S. Johnson, F. P. Garvan, B. B. Hinkley and D. C. Byers.

The Chances.

It is still too early to speak with any accuracy of Yale's chances in the coming track athletic season, but some review of the candidates can be made. The new material is unusually young, but is working in the right spirit, and training faithfully under the direction of Captain S. K. Gerard and Trainer Fitzpatrick. As the team is composed of many men of average ability rather than a few stars, Yale will rely chiefly on winning seconds and thirds. This will be the case especially in the dual games with Harvard, which bids fair to be a very closely contended meet. Charles H. Sherrill, '89; L. P. Sheldon, '96; W. B. Wright, '92; A. B. Coxe, '87, and others will assist in the coaching. It is impossible to judge what Yale's score at Mott Haven will be, since so much depends on the smaller colleges. Yale has an excellent show of winning the hurdles, shot put and hammer throw, having the men who won these events last year. The chances in the running races are no better than last year, when only six points were won. The loss of Allis in the pole vault and L. P. Sheldon in the broad jump will be seriously felt. The chances in the mile walk and high jump are about the same as last year.

In the sprints the candidates are fewer in numbers than the distance men, but are all good runners. The most promising are: R. W. Burnet, '97; who

(Continued on eighth page.)

Columbia 5% Nickel Steel Tubing

No bicycles are so strong as the Columbias, as they are made of 5% Nickel Steel Tubing, and we use all that can be made this year exclusively in Columbias. Unequaled, Unexcelled

Columbias, \$100 TO ALL ALIKE.
HARTFORDS, Next Best, \$75, \$60, \$50, \$45.

POPE MFG. CO., Hartford, Conn.

Greatest bicycle factories in the world. Branch house or dealer in almost every city and town.

Handsomest bicycle catalogue ever issued free from Columbia dealers or by mail for one 2-cent stamp.