



**PRELIMINARY CATALOGUE.**

**Total Enrollment One Less than Last Year—Representation by States.**

The Preliminary List has just appeared, and is on sale in the Treasury Building. The list shows the total number of men in the Academic Department to be 1,252, against 1,214 last year, and 551 in the Sheffield Scientific School, against 590 last year. The total number of men in both departments is this year 1803, a decrease of 1 from last year. The Freshman class in the Academic Department numbers 357, the largest in the history of the University. The Sophomore class, however, has decreased by 7, as in comparison with that of last year. On the other hand the Juniors and Seniors have gained, the former by 17, the latter by 1.

In the Scientific Department the Seniors have increased in comparison with last year's enrollment by 14. The Juniors have decreased by a larger number, owing to the fact that in the year when they entered, the standard was greatly raised, and consequently there was a great rush to get into last year's Junior class, before the increased standard went into effect. Again the increased standard greatly cut down the number which succeeded in entering the present Junior class. The number of 170 for the Freshman class is a considerable increase over that of last year.

The following statistics of the various classes are taken from the list: Academic Department, Seniors, 280; Juniors, 298; Sophomores, 317; Freshmen, 357;—Sheffield Scientific School: Seniors, 183; Juniors, 131; Freshmen, 170;—Graduates, 55;—Special Students, 12.

Below is given the representation by States of the different classes in the Academic Department, and in the Sheffield School:

| State         | '97 | '98 | '99 | 1900 | '97S. | '98S. | '99S. | Totals. |
|---------------|-----|-----|-----|------|-------|-------|-------|---------|
| New York      | 82  | 81  | 93  | 85   | 42    | 31    | 35    | 449     |
| Connecticut   | 57  | 63  | 65  | 78   | 68    | 42    | 54    | 349     |
| Pennsylvania  | 18  | 20  | 20  | 21   | 14    | 7     | 15    | 115     |
| New Jersey    | 18  | 14  | 10  | 23   | 8     | 9     | 7     | 109     |
| Ohio          | 17  | 22  | 23  | 17   | 11    | 7     | 9     | 106     |
| Illinois      | 12  | 15  | 22  | 19   | 12    | 8     | 14    | 102     |
| Massachusetts | 13  | 17  | 18  | 36   | 5     | 5     | 2     | 96      |
| Missouri      | 0   | 6   | 14  | 14   | 4     | 3     | 4     | 45      |
| Michigan      | 4   | 7   | 4   | 3    | 2     | 1     | 4     | 25      |
| Colorado      | 6   | 4   | 6   | 1    | 2     | 0     | 6     | 24      |
| Vermont       | 3   | 5   | 5   | 7    | 0     | 1     | 0     | 21      |
| Indiana       | 1   | 1   | 6   | 5    | 2     | 0     | 1     | 16      |
| Minnesota     | 1   | 3   | 3   | 2    | 2     | 2     | 2     | 15      |
| Kentucky      | 4   | 4   | 1   | 4    | 1     | 0     | 0     | 14      |
| Scattering    | 43  | 34  | 47  | 41   | 10    | 15    | 17    | 207     |
| Totals        | 280 | 298 | 317 | 359  | 183   | 131   | 170   | 1803    |

**Art School Fellowship Prize.**

A Fellowship prize of \$1,500 will be awarded June 1, 1897, in the Yale Art School. Competing students must have been pupils of the Yale School of Fine Arts for at least two years before entering a preliminary concours to be held two months before the final competition; the preliminary concours to consist in making a satisfactory full-length drawing from the nude model. The judges in the final competition will be the Faculty of the Yale School of Fine Arts and three well known American artists—two painters and one sculptor. This Fellowship is intended to enable the successful competitor to pass two years in study abroad. Other prizes are offered for competition in regular course for special merit.

**SOPHOMORE POLITICAL CLUBS.**

**Will hold Debates on the three Party Platforms.**

Three debating clubs were formed in the Sophomore class, to debate on the principal issues of the presidential campaign. They are called the McKinley, the Palmer, and the Bryan Clubs. Of these three clubs, the McKinley Club is the largest, the Palmer Club comes next, and the Bryan Club brings up the rear with a very limited membership.

At a meeting, at which committees from the three clubs were present, it was decided that there should be first a political rally on October 12, in which two speakers from each club should set forth the principles, which compose the platforms of the three great parties, and second that thereafter, debates should be held once or twice a week, on the principal issues of the campaign. The subjects for these debates are to be chosen at a future committee meeting. Thursday, October 15th, was the night chosen for the first debate.

At the first meeting of the McKinley Club held October 2d, the names of the men were taken, who wished to join, and it was found there were 27 members. Then the club proceeded to the election of officers. J. D. Graves was elected President, C. A. Squire, Secretary, and an Executive Committee of three, composed of G. W. Brown, E. B. Boise, and G. W. Field, was appointed. Two men, G. W. Brown and K. O. Guthrie, were chosen to represent the club at the political rally.

The Palmer Club held its meeting the same night. Ten men were present, and of these C. L. Darlington was chosen President. An Executive Committee consisting of the President and two other members, A. S. Mann and L. D. Armstrong, was elected. The Club then voted that it should hold a competitive debate, to decide who should represent them at the political rally.

The Bryan Club was to have been organized last Monday evening but the meeting was at the last moment postponed. The members will meet in a few days and appoint two men to represent the party platform at the political rally.

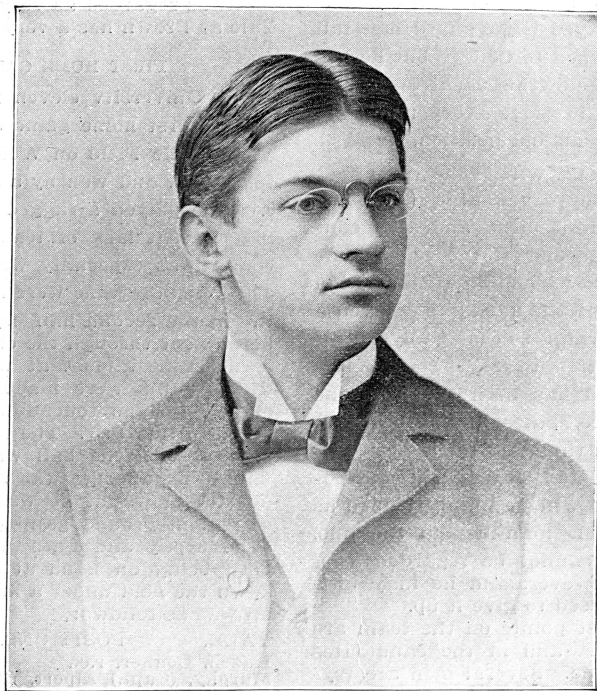
**Civil Service Reform Club.**

A meeting of the executive committee of the Yale Civil Service Reform Club was held on Wednesday evening, September 30. It was decided to hold a course of lectures to begin as soon as possible. The lectures will be given by practical men from different parts of the country, who desire themselves to see the Civil Service Reform put to some practical use and who will speak with that end in view.

In all probability the first lecture will be given for the express purpose of giving some definite idea of what Civil Service Reform really is, what its purpose is and how it can be put into use, both in the Federal Government and in state and city legislatures. Later an endeavor will be made to have Hon. Theodore Roosevelt, Mr. Welch and other prominent speakers, address the club.

As yet no definite time has been set for any of the lectures but they will begin as soon as it is possible to arrange for them.

**WILLIAM LYON PHELPS.**



Assistant Professor of English Literature.

(Reprinted by permission from the Book Buyer.)

**PHELPS HALL OPENING.**

**Ceremonies to be Held under the Auspices of the Classical Club.**

Under the auspices of the Classical Club, the beautiful library and seminary rooms set apart at the top of Phelps Hall for the use of this club, will be formally opened on October 9. Prof. Basil L. Gildersleeve of Johns Hopkins University will deliver an address that evening in Battell Chapel on "Classical Philology in America." Prof. Gildersleeve, the learned editor of the American Journal of Philology, is one of the brightest and wittiest of American scholars. He has studied in Berlin, Göttingen, Rome and Greece, and in 1868, received from Harvard the degree of LL. D.

This address will be followed by a reception in the newly finished library of the Classical Club. A large number of invitations have been sent out, and have been accepted by many of the leading scholars of the east. Among them may be mentioned: President D. C. Gilman of Johns Hopkins, Edmund Clarence Stedman and William Hayes Ward of New York, Mrs. President Irvine of Wellesley, Professors Charles Eliot Norton, J. H. Thayer and F. D. Allen of Harvard, Professors Ware, Price, Perry, Egbert and Wheeler of Columbia, Professor Sloane of Princeton, Miss Professor Leads of Vassar, and many others.

The library room is fifty feet in length by about twenty-four in breadth, with lofty ceilings and great windows, which command a view not only of the College Campus, but of the better part of the city, and into the surrounding country. The book shelves are made to hold 2,500 volumes, and will be extended as the library grows. The plan contemplates that this shall be the workshop and headquarters of the work of the advanced students in philology, and cabinets of drawers and long tables are provided for their con-

**Professor William L. Phelps.**

William Lyon Phelps, former instructor in English at Yale, was made an assistant professor of the same study last June. Professor Phelps graduated in 1887. For the winter of 1887-88 he was general secretary of the Yale Y. M. C. A. at Dwight Hall. The next winter he was instructor in History at the Westminster School, Dobbs Ferry, N. Y. In the following year he took a post-graduate course in English at Yale, as Larned Scholar. In the fall of 1890 he received an appointment to a Morgan Fellowship at Harvard, where he studied the following winter, receiving in June 1891, the degree of Ph. D., from Yale, and of M. A. from Harvard. He was re-appointed to the Morgan Fellowship, for the next year, but resigned it to take a position as instructor in English at Harvard. He was president of the Harvard Graduate Club, 1891-92.

He was appointed instructor in English at Yale, for the winter of 1892-93, and has remained in that position until last June.

He has lectured on literary subjects at Hartford, and other places, with decided success.

During the last four years he has published four books as follows:

"The Beginnings of the English Romantic Movement," in 1893; "Selections From the Poetry and Prose of Thomas Gray," in 1894; "George Chapman," which was published as one of "The Mermaid Series," in 1895, and Shakespeare's "As You Like It," with an introduction by Barrett Wendell of Harvard, and notes by himself in 1896.

It has been decided by the corporation of Harvard University to participate in the restoration of St. Saviour's Church in Southwark, London, by presenting to it a memorial window of John Harvard. He was baptized in the church on November 23, 1607.

[Continued on fifth page.]